

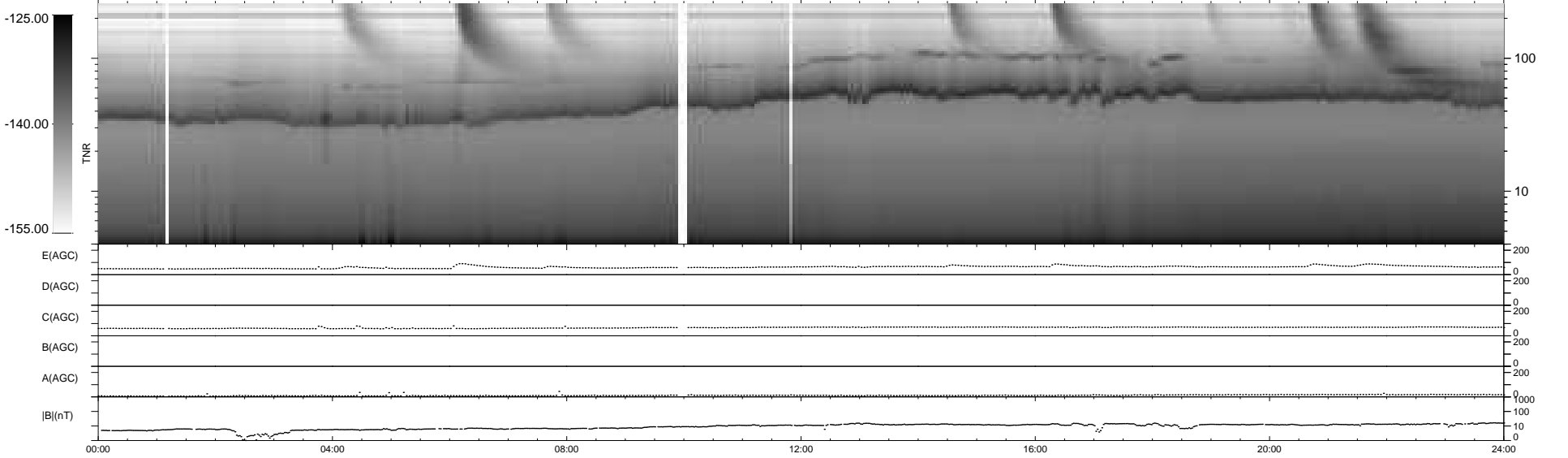
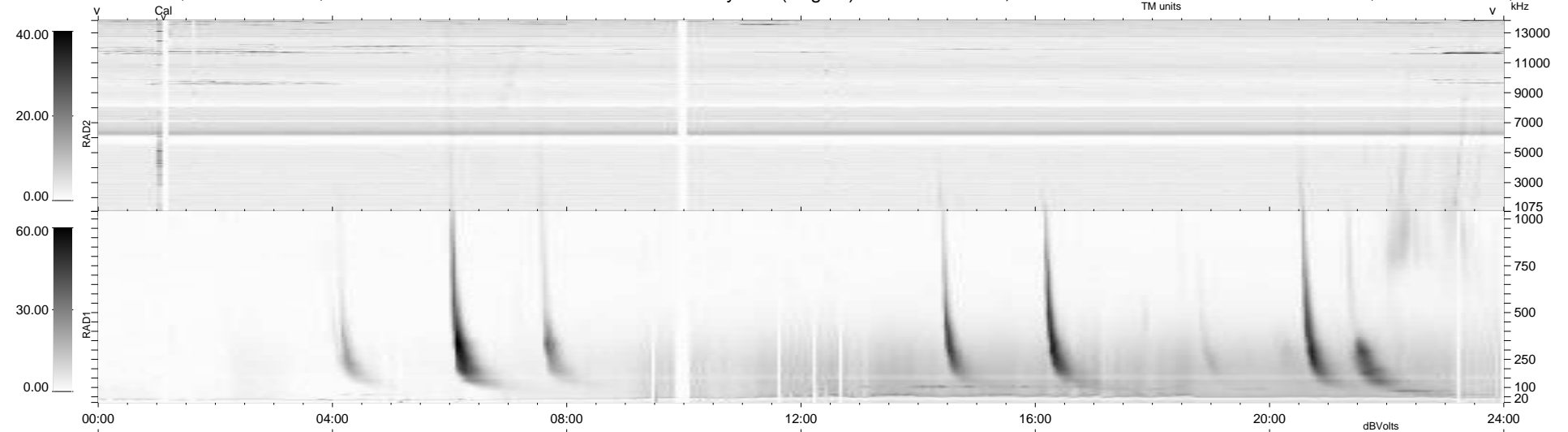
34 bad + 905 good MF/939MF projected (96%) - 0 missing MFs
 Avg interval = 180 secs
 Re = -222.64 (207.41, -80.87, -3.04 GSE)

windlib 2.0b

LZ version = v01

WIND/WAVES Summary Plot (Page 1) for 07-JUN-2015, DOY = 158

DAILY 2015-06-09 03:52:04
 Re = 221.53 (207.03, -78.73, -3.61 GSE)



RAD2
 Antenna Ey
 Mode LIN(1)
 SUM/SEP SEP
 Toggle OFF

RAD1
 Antenna Ex
 Mode LIS(2,4)
 SUM/SEP SUM
 Toggle OFF

TNR
 Antenna ExEy
 Mode A-32
 Sweep ACE