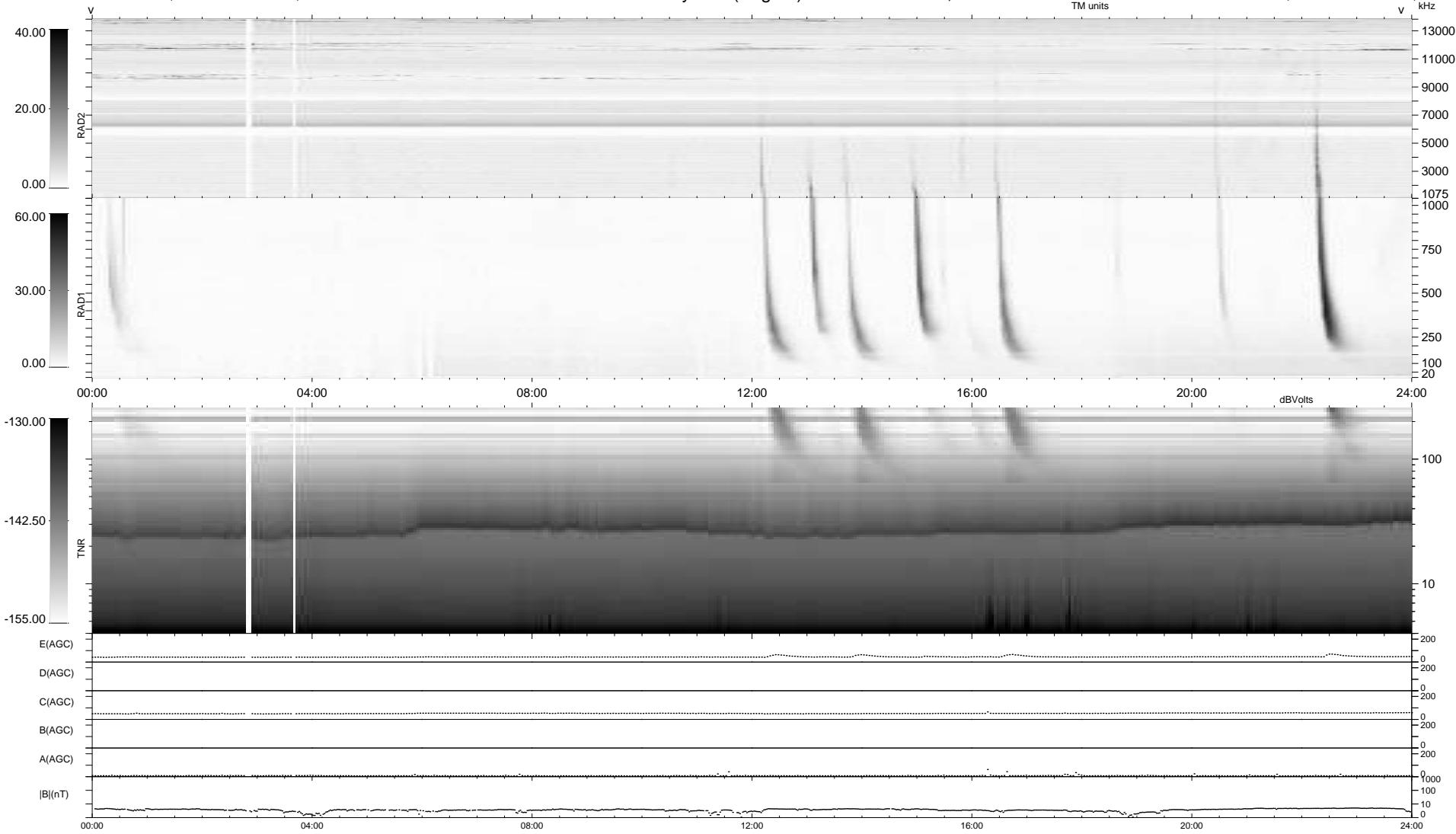


33 bad + 906 good MF/939MF projected (96%) - 0 missing MFs  
 Avg interval = 180 secs  
 Re = 238.91 (217.62, -98.48, 4.35 GSE)

windlib 2.0b LZ version = v01  
 DAILY 2015-05-26 15:52:07  
 Re = 237.62 (216.56, -97.71, 3.81 GSE)

### WIND/WAVES Summary Plot (Page 1) for 25-MAY-2015, DOY = 145



```

RAD2
Antenna Ey .....
Mode LIN(1) .....
SUM/SEP SEP .....
Toggle OFF .....

RAD1
Antenna Ex .....
Mode LIS(2,4) .....
SUM/SEP SUM .....
Toggle OFF .....

TNR
Antenna ExEy .....
Mode A-32 .....
Sweep ACE .....
  
```