

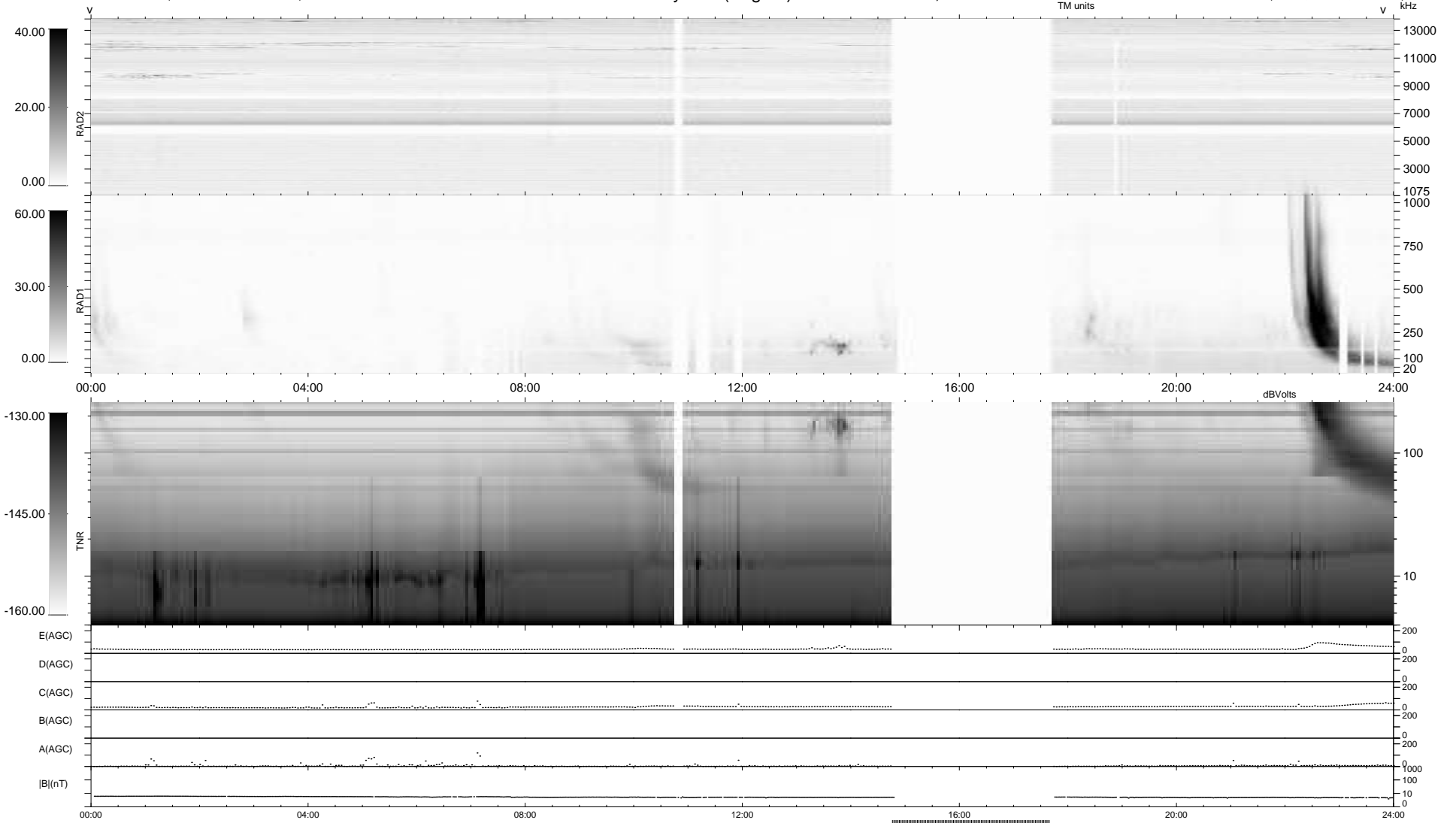
29 bad + 796 good MF/939MF projected (84%) - 114 missing MFs
Avg interval = 180 secs
Re = 243.92 (222.07, -100.69, 6.54 GSE)

windlib 2.0b

LZ version = v01

WIND/WAVES Summary Plot (Page 1) for 21-MAY-2015, DOY = 141

DAILY 2015-05-22 15:52:04
Re = 242.72 (220.95, -100.28, 6.00 GSE)



RAD2
Antenna Ey
Mode LIN(1)
SUM/SEP SEP
Toggle OFF

RAD1
Antenna Ex
Mode LIS(2,4)
SUM/SEP SUM
Toggle OFF

TNR
Antenna ExEy
Mode A-32
Sweep ACE