

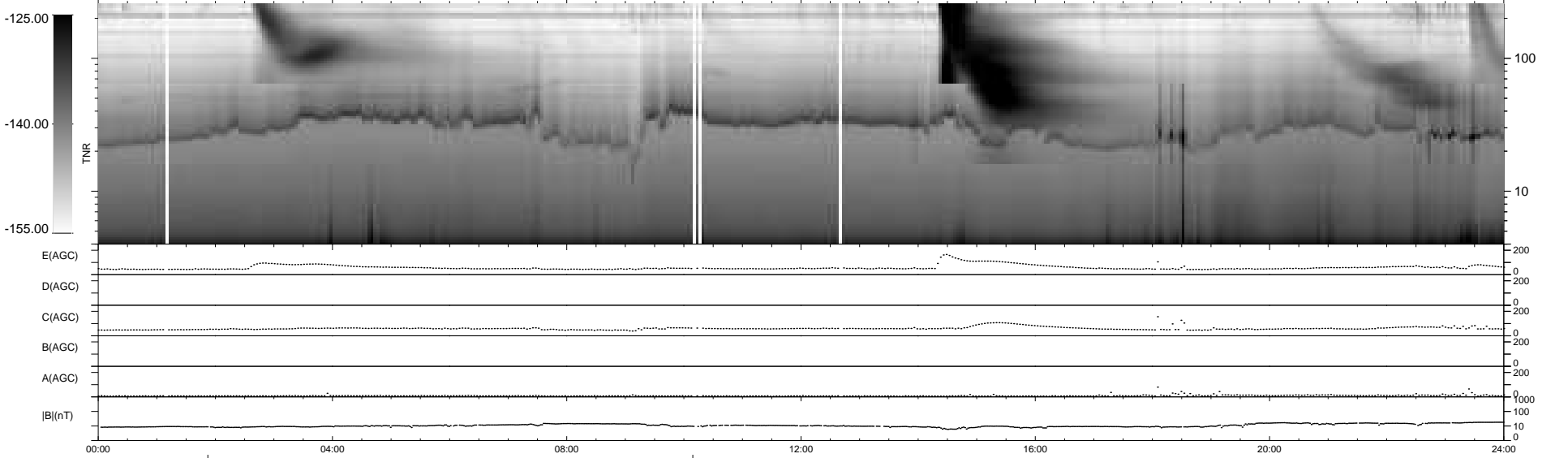
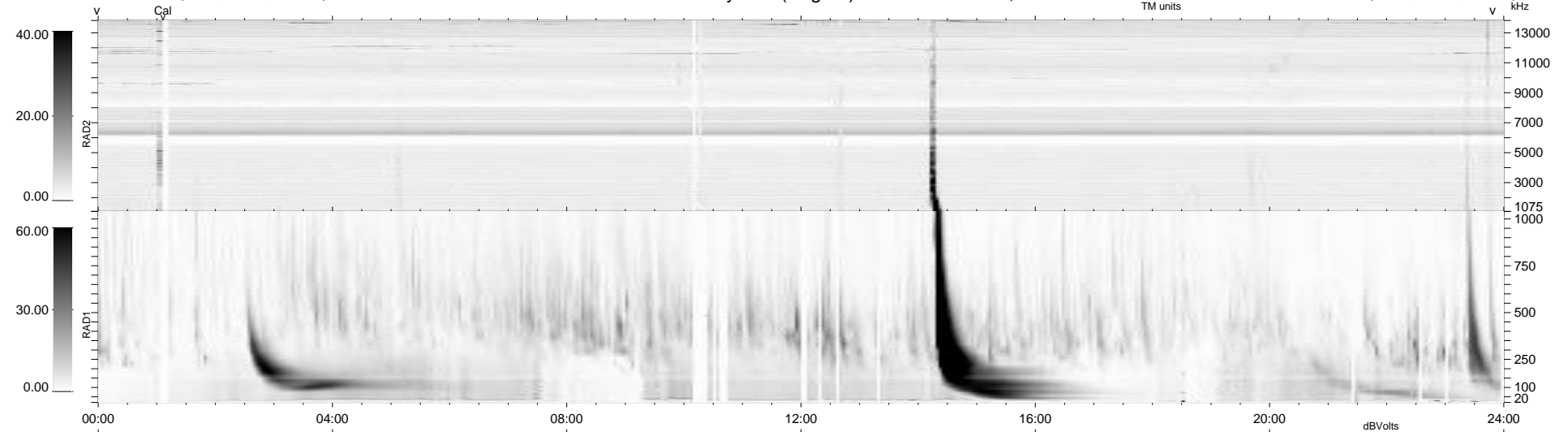
35 bad + 902 good MF/939MF projected (96%) - 2 missing MFs  
 Avg interval = 180 secs  
 Re = -247.23 (225.37, -101.31, 8.13 GSE)

windlib 2.0b

LZ version = v01

### WIND/WAVES Summary Plot (Page 1) for 18-MAY-2015, DOY = 138

DAILY 2015-05-19 23:52:06  
 Re = 246.19 (224.29, -101.22, 7.61 GSE)



RAD2  
 Antenna Ey  
 Mode LIN(1)  
 SUM/SEP SEP  
 Toggle OFF

RAD1  
 Antenna Ex  
 Mode LIS(2,4)  
 SUM/SEP SUM  
 Toggle OFF

TNR  
 Antenna ExEy  
 Mode A-32  
 Sweep ACE