

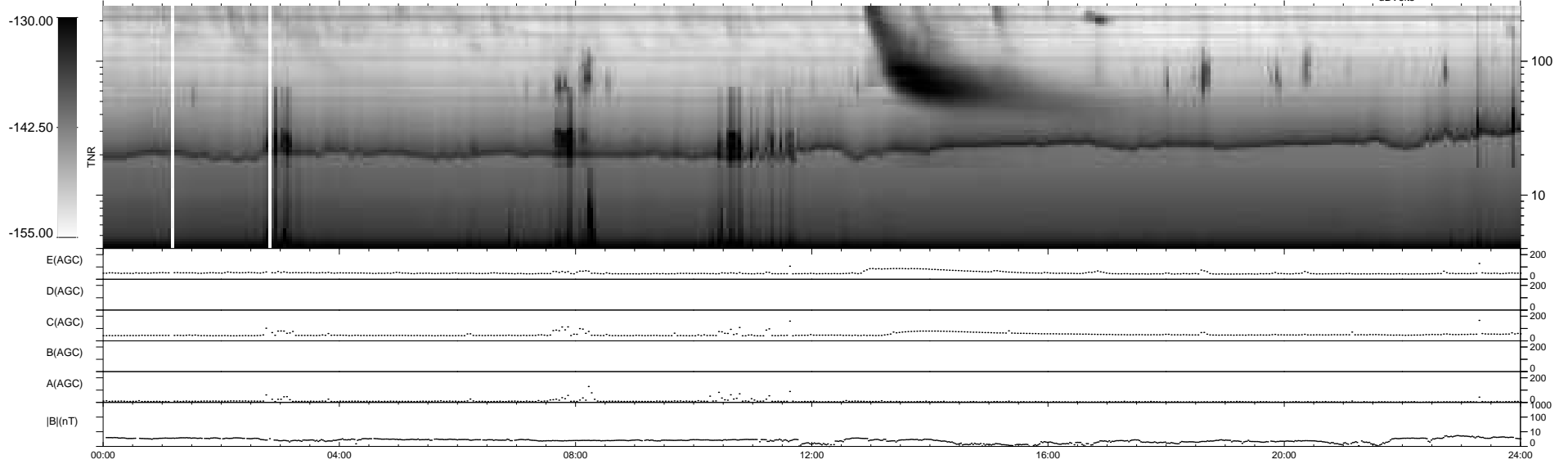
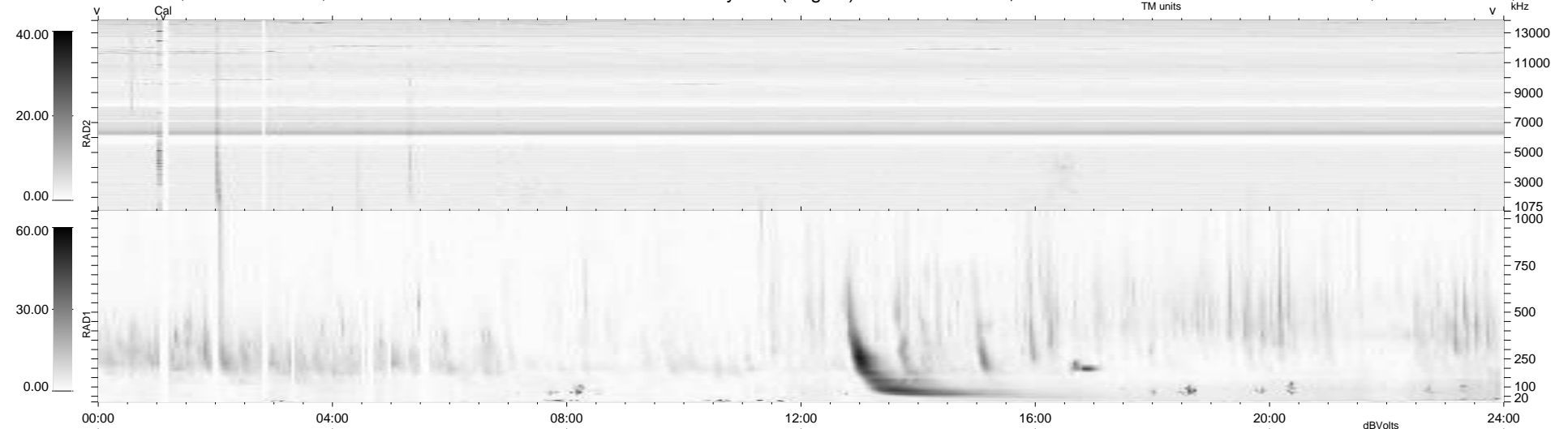
33 bad + 906 good MF/939MF projected (96%) - 0 missing MFs
 Avg interval = 180 secs
 Re = 249.13 (227.49, -101.14, 9.17 GSE)

windlib 2.0b

LZ version = v01

WIND/WAVES Summary Plot (Page 1) for 16-MAY-2015, DOY = 136

DAILY 2015-05-18 11:25:04
 Re = 248.22 (226.45, -101.29, 8.66 GSE)



```

RAD2
Antenna Ey .....
Mode LIN(1) .....
SUM/SEP SEP .....
Toggle OFF .....

RAD1
Antenna Ex .....
Mode LIS(2/4) .....
SUM/SEP SUM .....
Toggle OFF .....

TNR
Antenna ExEy .....
Mode A-32 .....
Sweep ACE .....
  
```