

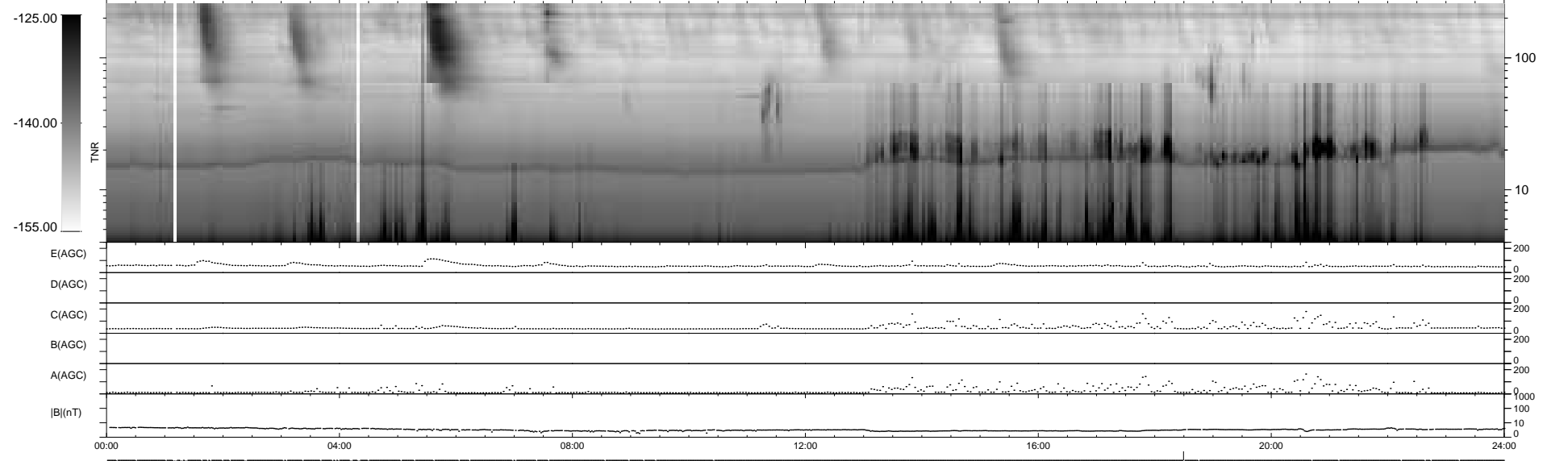
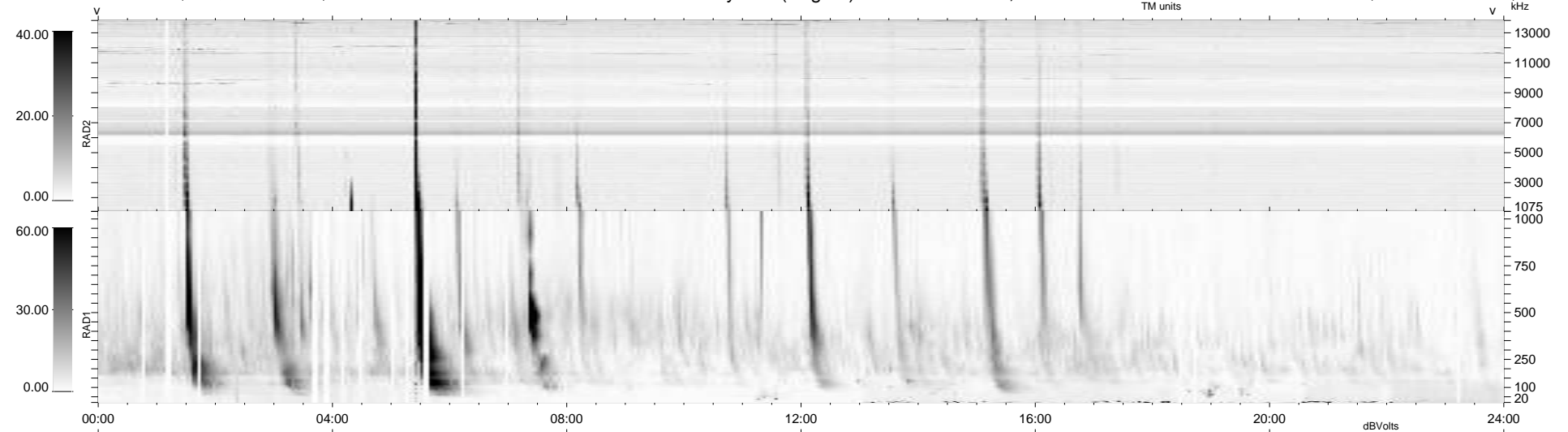
50 bad + 888 good MF/939MF projected (94%) - 1 missing MF
 Avg interval = 180 secs
 Re = -249.97 (228.52, -100.86, 9.67 GSE)

windlib 2.0b

LZ version = v01

WIND/WAVES Summary Plot (Page 1) for 15-MAY-2015, DOY = 135

DAILY 2015-05-18 10:54:55
 Re = 249.14 (227.50, -101.14, 9.17 GSE)



RAD2
 Antenna Ey
 Mode LIN(1)
 SUM/SEP SEP
 Toggle OFF

RAD1
 Antenna Ex
 Mode LIS(2,4)
 SUM/SEP SUM
 Toggle OFF

TNR
 Antenna ExEy
 Mode A-32
 Sweep ACE