

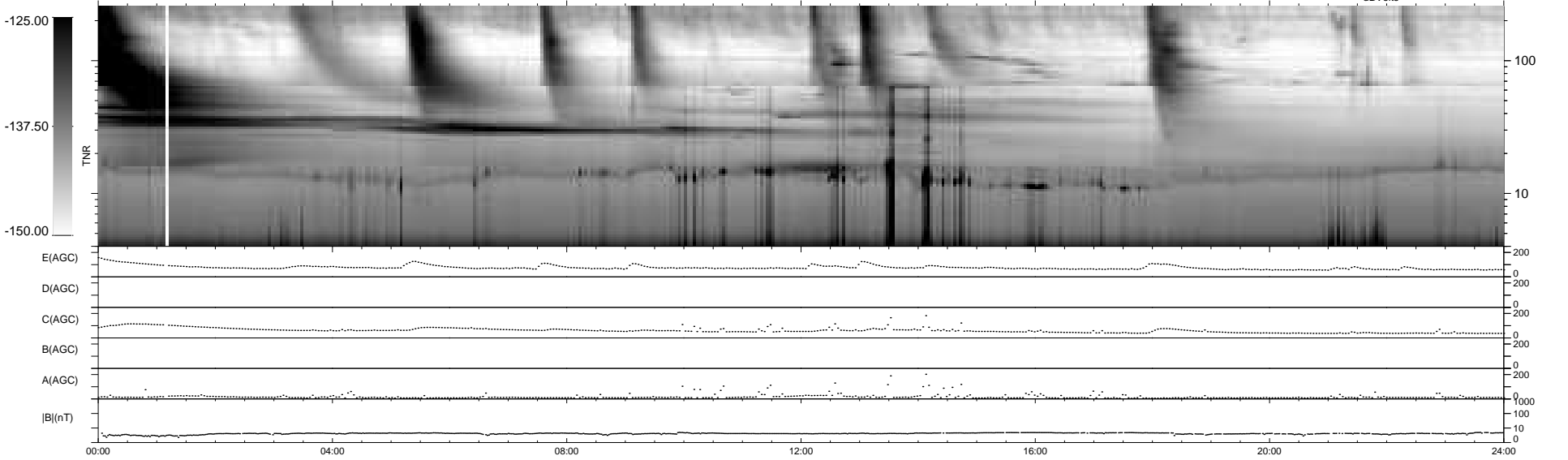
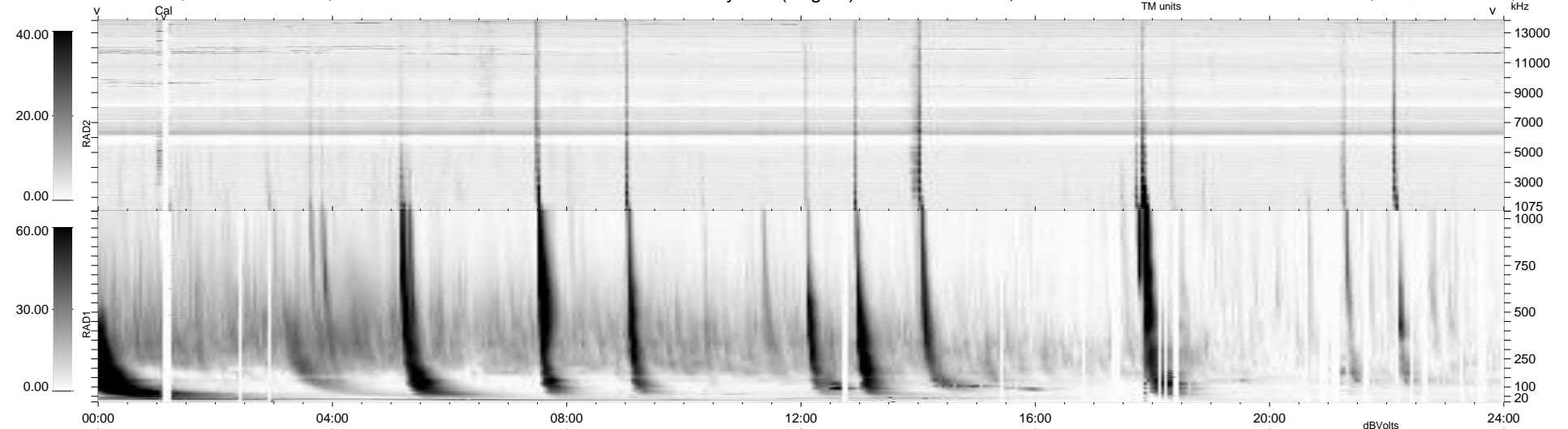
37 bad + 902 good MF/939MF projected (96%) - 0 missing MFs
 Avg interval = 180 secs
 Re = -250.75 (229.53, -100.43, 10.17 GSE)

windlib 2.0b

LZ version = v01

WIND/WAVES Summary Plot (Page 1) for 14-MAY-2015, DOY = 134

DAILY 2015-05-18 10:54:00
 Re = 249.98 (228.53, -100.86, 9.68 GSE)



```

RAD2
Antenna Ey .....
Mode LIN(1) .....
SUM/SEP SEP .....
Toggle OFF .....

RAD1
Antenna Ex .....
Mode LIS(2,4) .....
SUM/SEP SUM .....
Toggle OFF .....

TNR
Antenna ExEy .....
Mode A-32 .....
Sweep ACE .....
  
```