

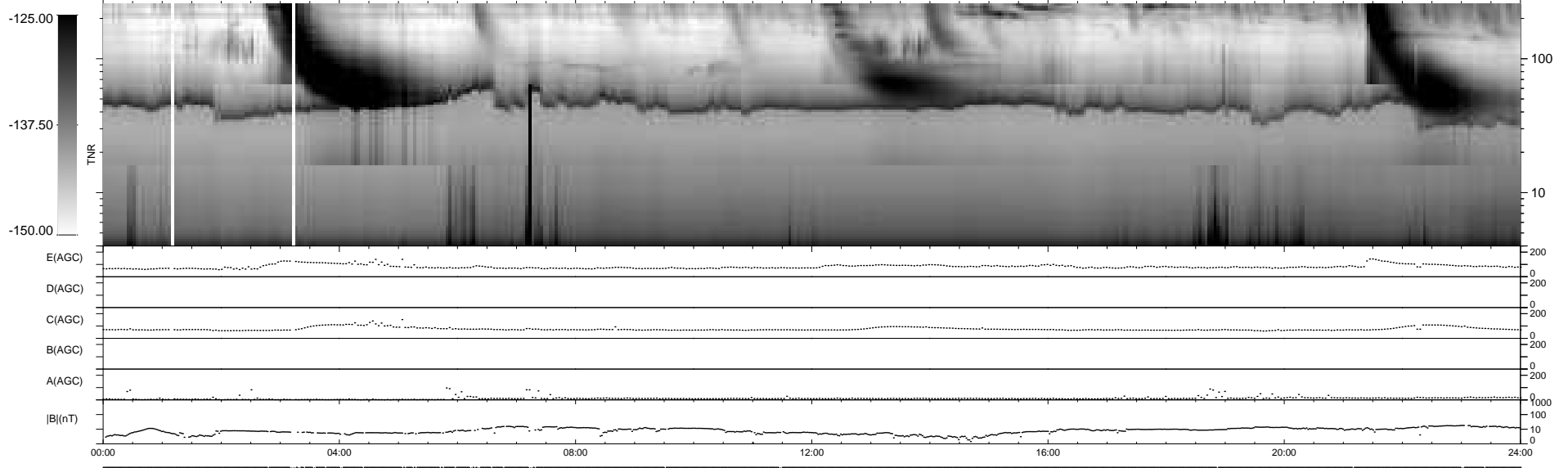
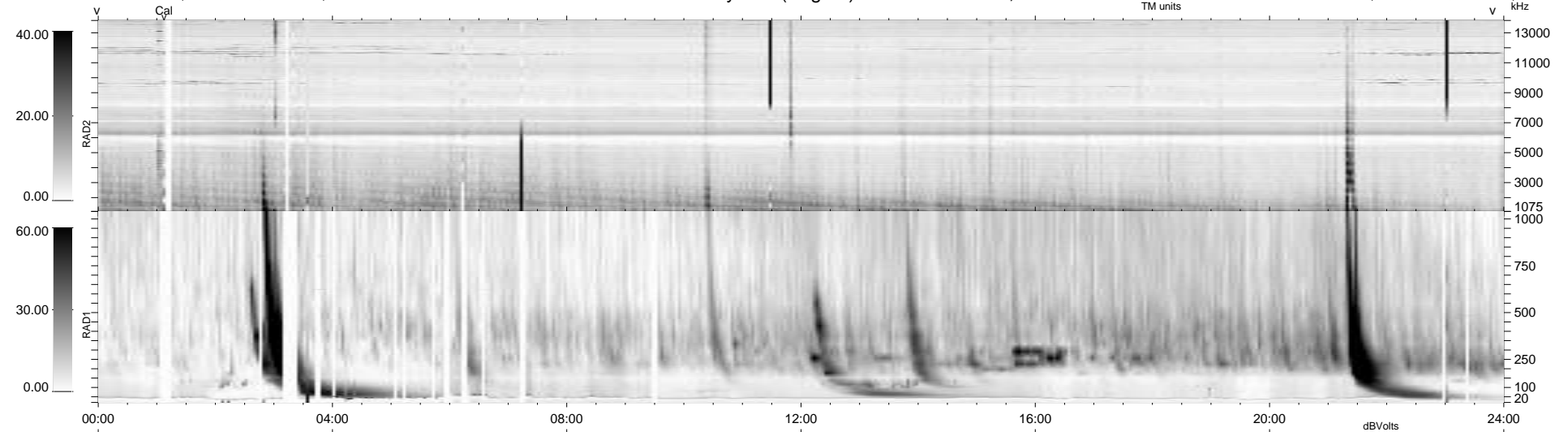
40 bad + 900 good MF/940MF projected (95%) - 0 missing MFs
 Avg interval = 180 secs
 Re = -252.11 (231.53, -99.14, 11.12 GSE)

windlib 2.0b

LZ version = v02

WIND/WAVES Summary Plot (Page 1) for 12-MAY-2015, DOY = 132

DAILY 2015-05-18 10:48:04
 Re = 251.46 (230.54, -99.86, 10.66 GSE)



```

RAD2
Antenna  Ey .....
Mode     LIN(1) .....
SUM/SEP  SEP .....
Toggle   OFF .....

RAD1
Antenna  Ex .....
Mode     LIS(2,4) .....
SUM/SEP  SUM .....
Toggle   OFF .....

TNR
Antenna  ExEy .....
Mode     A-32 .....
Sweep    ACE .....
  
```