

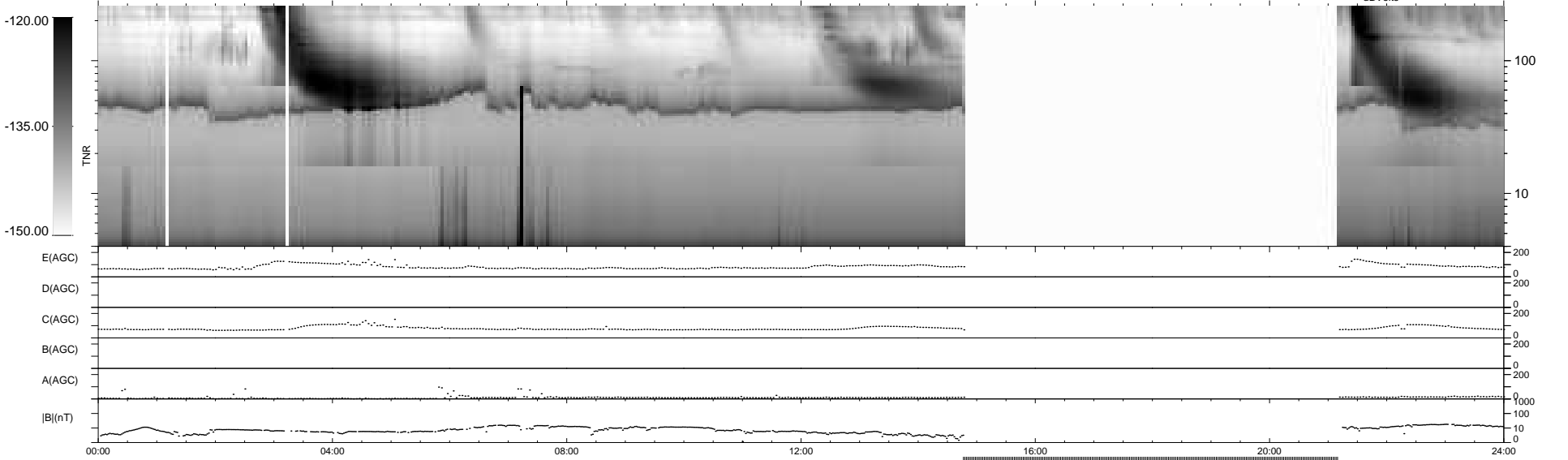
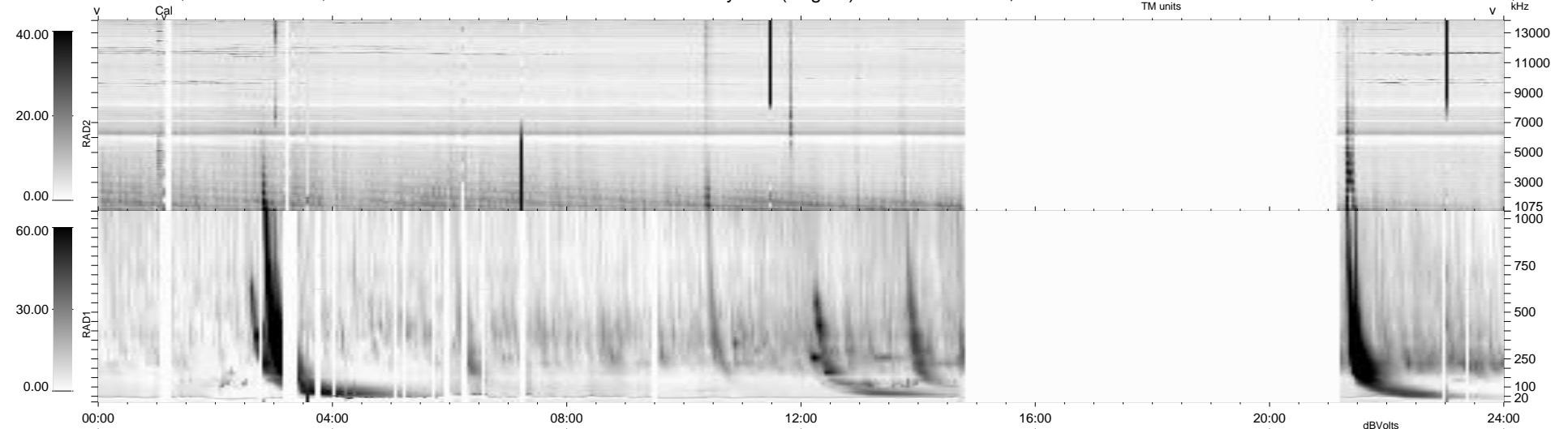
39 bad + 650 good MF/940MF projected (69%) - 251 missing MFs
 Avg interval = 180 secs
 Re = -252.11 (231.53, -99.14, 11.12 GSE)

windlib 2.0b

LZ version = v01

WIND/WAVES Summary Plot (Page 1) for 12-MAY-2015, DOY = 132

DAILY 2015-05-14 08:57:59
 Re = 251.46 (230.54, -99.86, 10.66 GSE)



```

RAD2
Antenna Ey
Mode LIN(1)
SUM/SEP SEP
Toggle OFF

RAD1
Antenna Ex
Mode LIS(2,4)
SUM/SEP SUM
Toggle OFF

TNR
Antenna ExEy
Mode A-32
Sweep ACE
  
```