

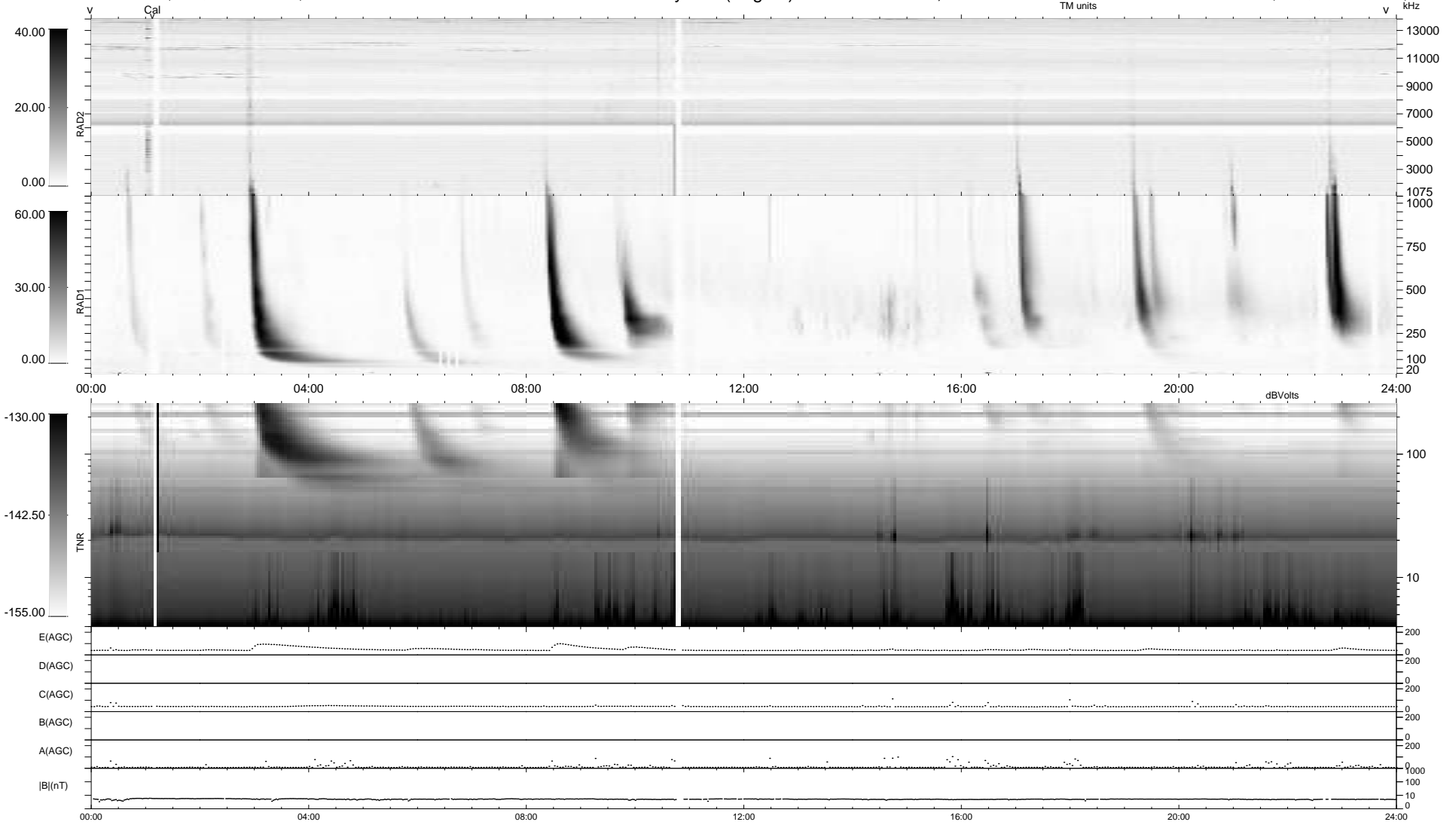
24 bad + 916 good MF/940MF projected (97%) - 0 missing MFs
 Avg interval = 180 secs
 Re = 256.07 (239.91, -88.36, 14.34 GSE)

windlib 2.0b

LZ version = v01

WIND/WAVES Summary Plot (Page 1) for 04-MAY-2015, DOY = 124

DAILY 2017-10-10 08:04:05
 Re = 255.63 (238.80, -90.13, 14.00 GSE)



RAD2
 Antenna Ey
 Mode LIN(1)
 SUM/SEP SEP
 Toggle OFF

RAD1
 Antenna Ex
 Mode LIS(2,4)
 SUM/SEP SUM
 Toggle OFF

TNR
 Antenna ExEy
 Mode A-32
 Sweep ACE