

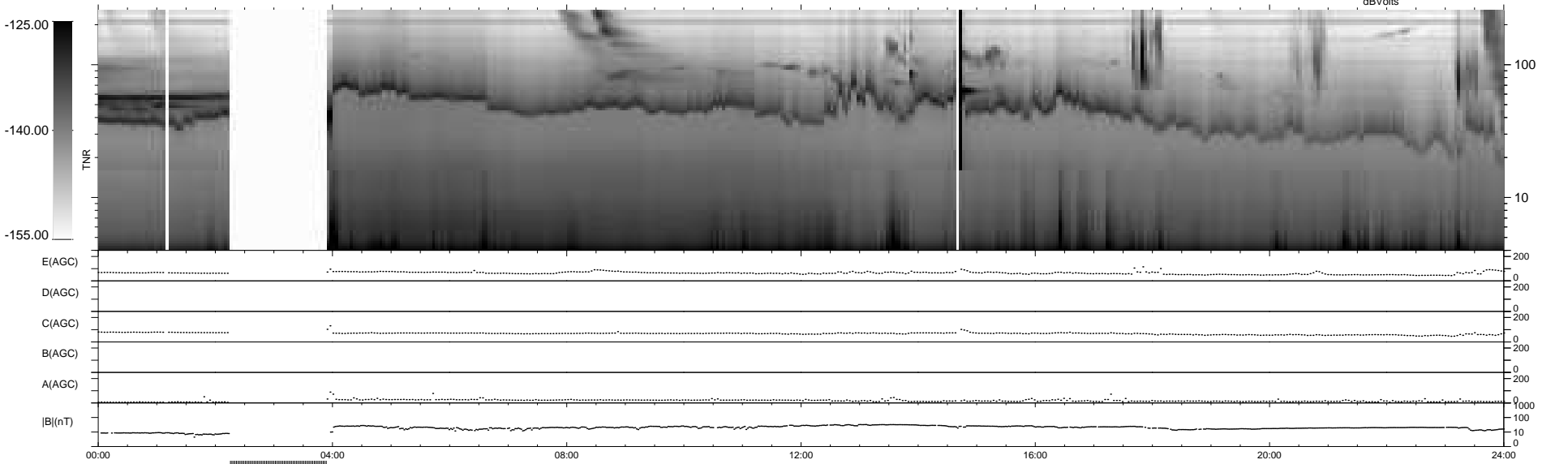
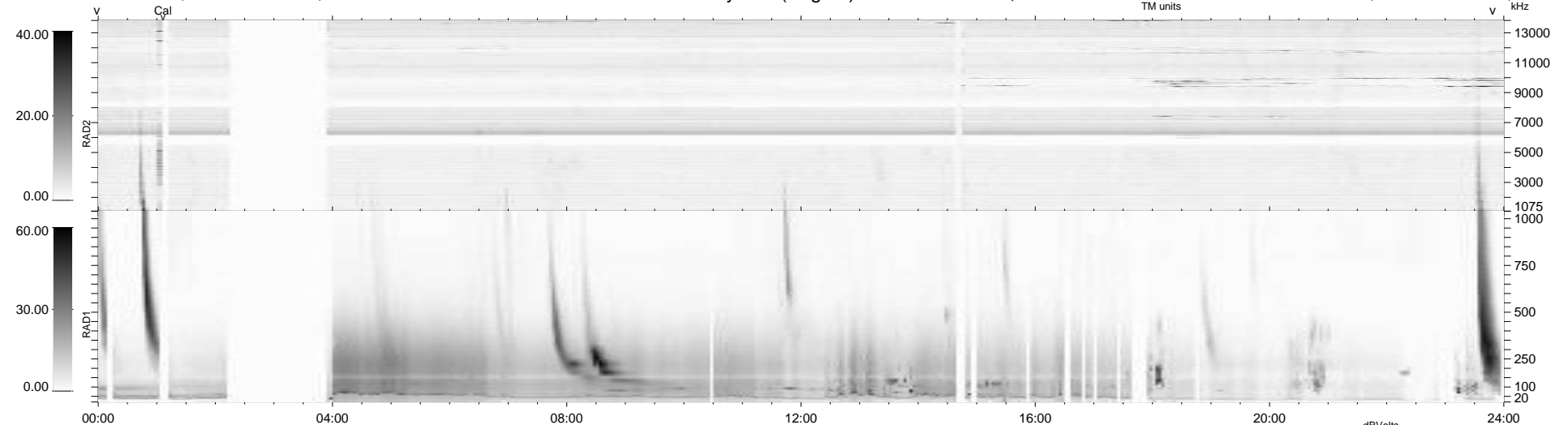
45 bad + 829 good MF/939MF projected (88%) - 65 missing MFs  
 Avg interval = 180 secs  
 Re = - 258.85 (252.67, 54.81, 12.50 GSE)

windlib 2.0b

LZ version = v01

### WIND/WAVES Summary Plot (Page 1) for 17-MAR-2015, DOY = 76

DAILY 2015-03-18 09:46:03  
 Re = 259.26 (253.66, 52.04, 12.90 GSE)



```

RAD2
Antenna Ey .....
Mode LIN(1) .....
SUM/SEP SEP .....
Toggle OFF .....

RAD1
Antenna Ex .....
Mode LIS(2,4) .....
SUM/SEP SUM .....
Toggle OFF .....

TNR
Antenna ExEy .....
Mode A-32 .....
Sweep ACE .....
  
```