

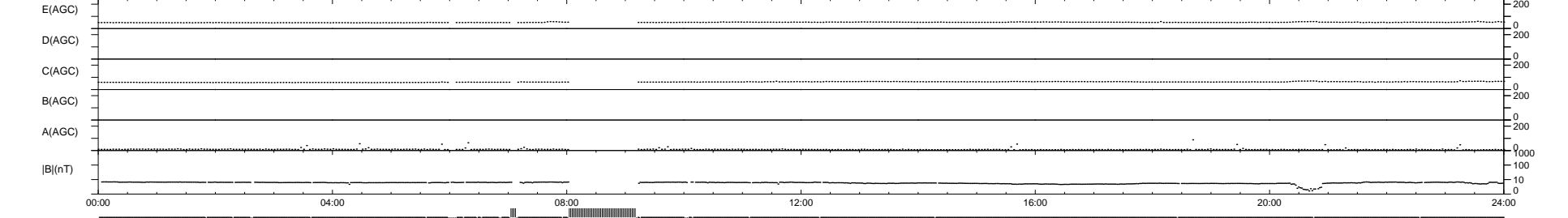
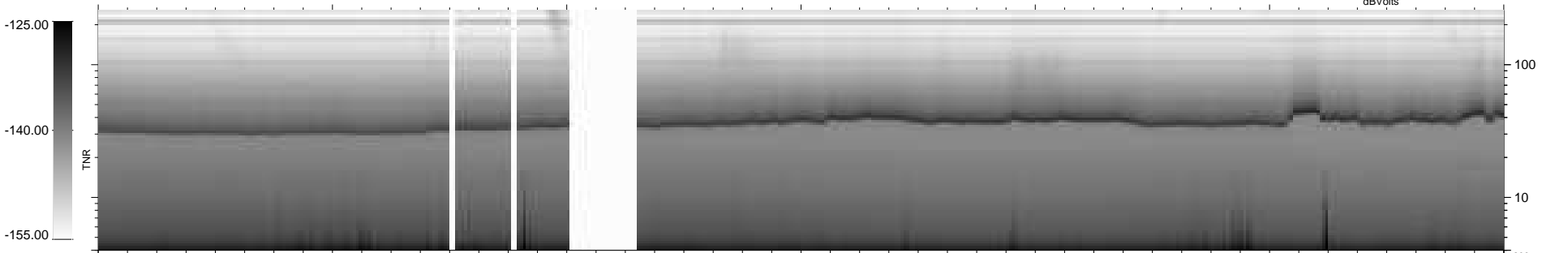
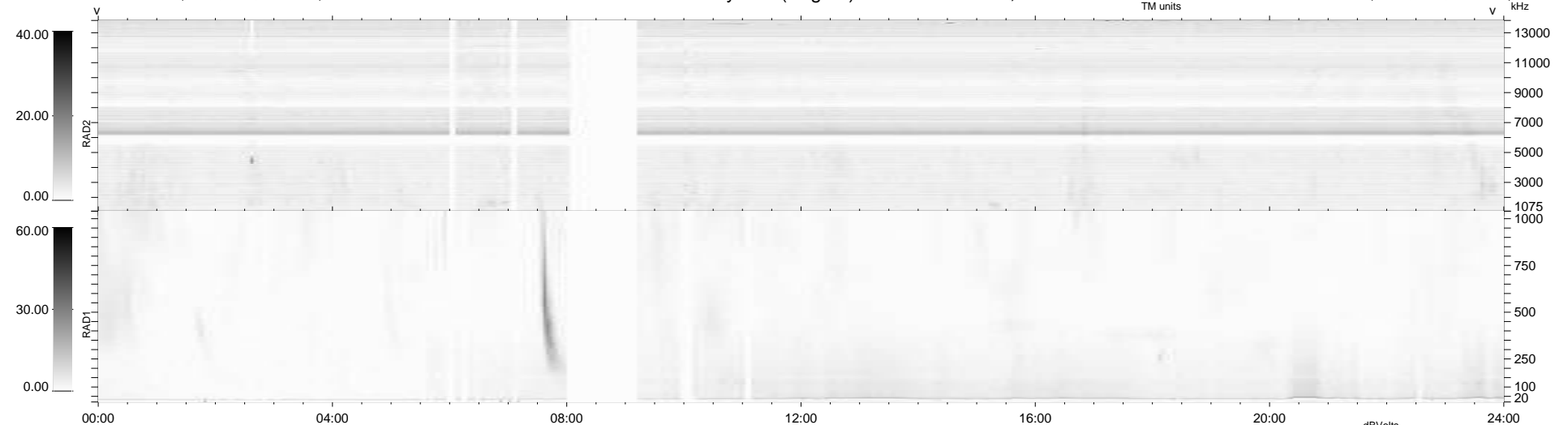
33 bad + 857 good MF/939MF projected (91%) - 49 missing MFs  
 Avg interval = 180 secs  
 Re = 257.41 (249.35, 62.95, 11.22 GSE)

windlib 2.0b

LZ version = v01

### WIND/WAVES Summary Plot (Page 1) for 14-MAR-2015, DOY = 73

DAILY 2015-03-15 09:46:05  
 Re = 257.91 (250.50, 60.30, 11.66 GSE)



```

RAD2
Antenna Ey .....
Mode LIN(1) .....
SUM/SEP SEP .....
Toggle OFF .....

RAD1
Antenna Ex .....
Mode LIS(2,4) .....
SUM/SEP SUM .....
Toggle OFF .....

TNR
Antenna ExEy .....
Mode A-32 .....
Sweep ACE .....
  
```