

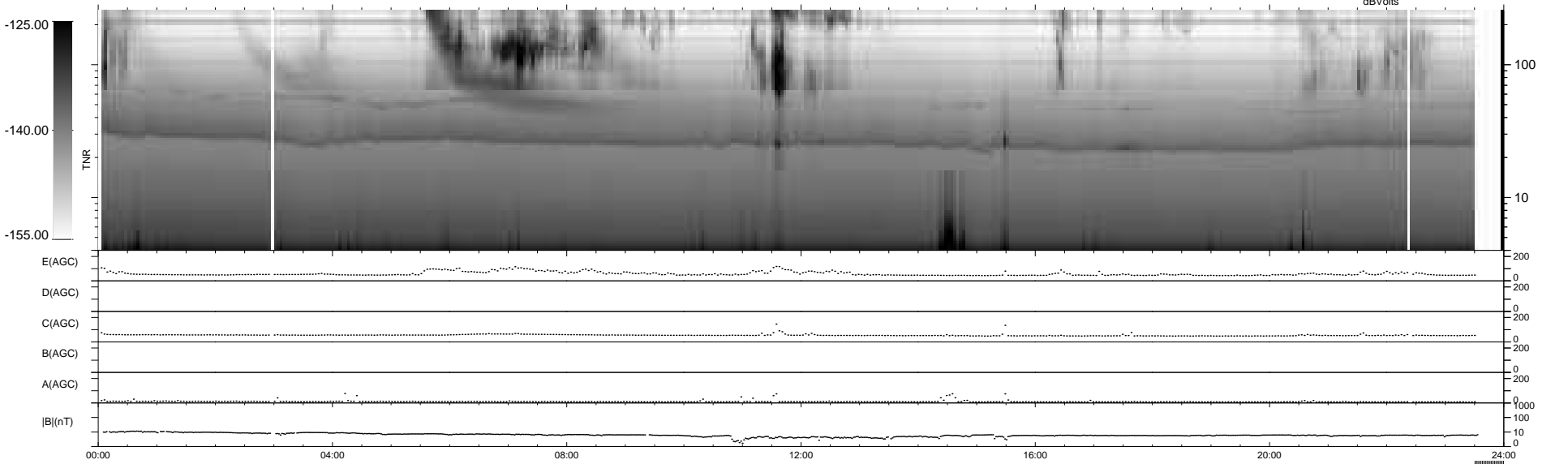
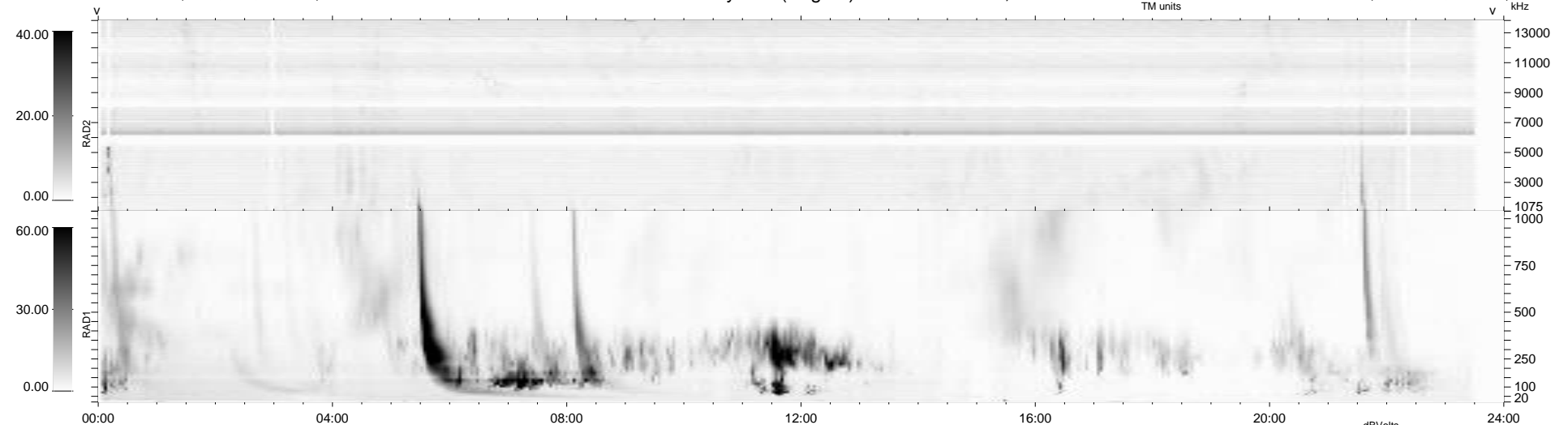
21 bad + 898 good MF/939MF projected (95%) - 20 missing MFs
Avg interval = 180 secs
Re = 241.71 (220.33, 99.36, -1.64 GSE)

windlib 2.0b

LZ version = v01

WIND/WAVES Summary Plot (Page 1) for 18-FEB-2015, DOY = 49

DAILY 2015-02-19 20:46:03
Re = 242.84 (221.59, 99.34, -1.08 GSE)



RAD2 Antenna Mode SUM/SEP Toggle
RAD1 Antenna Mode SUM/SEP Toggle
TNR Antenna Mode Sweep