

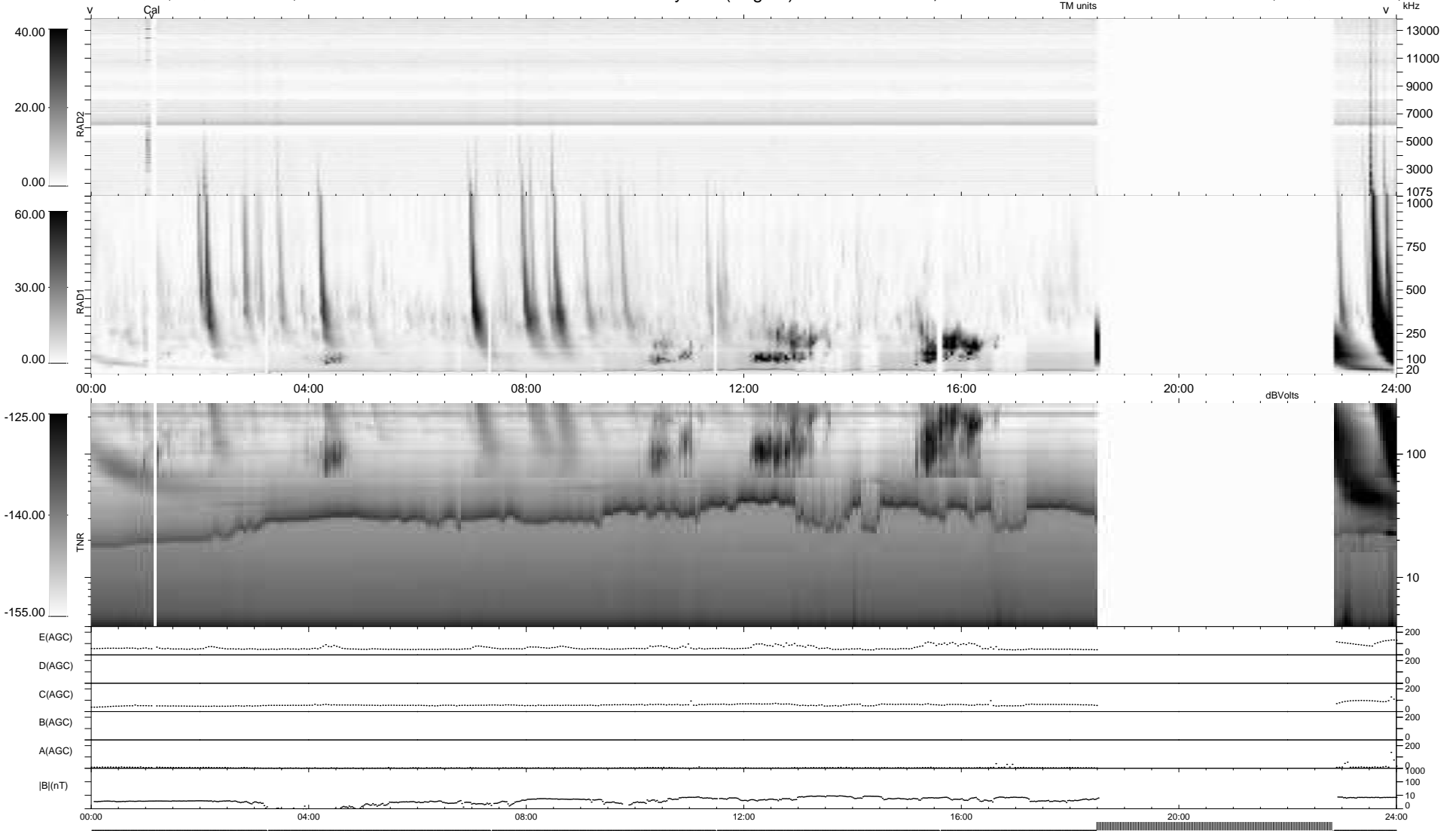
5 bad + 764 good MF/939MF projected (81%) - 170 missing MFs
 Avg interval = 180 secs
 Re = -224.19 (204.99, 90.36, -8.72 GSE)

windlib 2.0b

LZ version = v01

WIND/WAVES Summary Plot (Page 1) for 05-FEB-2015, DOY = 36

DAILY 2015-02-06 10:46:03
 Re = 225.53 (205.91, 91.65, -8.23 GSE)



```

RAD2
Antenna Ey .....
Mode LIN(1) .....
SUM/SEP SEP .....
Toggle OFF .....

RAD1
Antenna Ex .....
Mode LIS(2,4) .....
SUM/SEP SUM .....
Toggle OFF .....

TNR
Antenna ExEy .....
Mode A-32 .....
Sweep ACE .....
  
```