

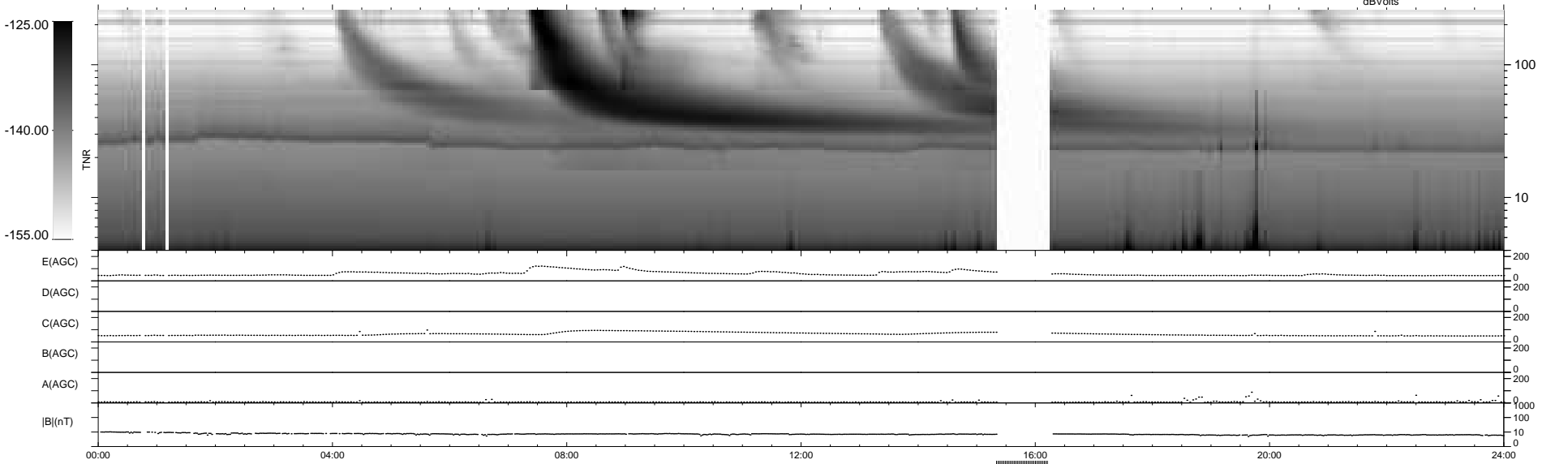
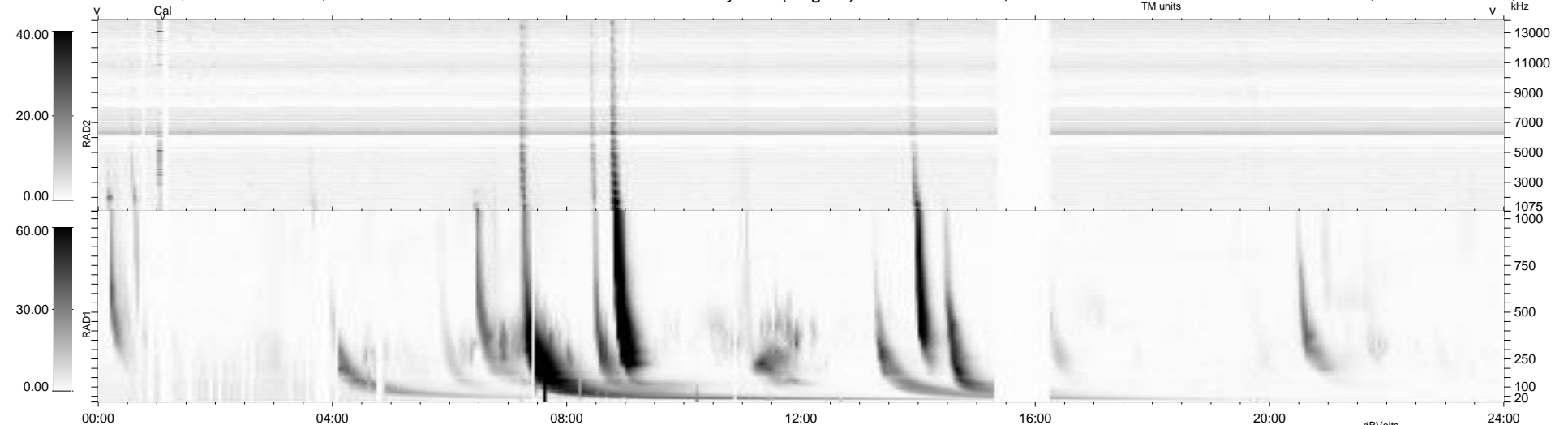
36 bad + 868 good MF/939MF projected (92%) - 35 missing MFs
 Avg interval = 180 secs
 Re = 200.06 (195.88, 37.87, -14.89 GSE)

windlib 2.0b

LZ version = v01

WIND/WAVES Summary Plot (Page 1) for 16-JAN-2015, DOY = 16

DAILY 2015-01-17 15:46:04
 Re = 201.07 (196.20, 41.42, -14.78 GSE)



RAD2
 Antenna Ey
 Mode LIN(1)
 SUM/SEP SEP
 Toggle OFF

RAD1
 Antenna Ex
 Mode LIS(2,4)
 SUM/SEP SUM
 Toggle OFF

TNR
 Antenna ExEy
 Mode A-32
 Sweep ACE