

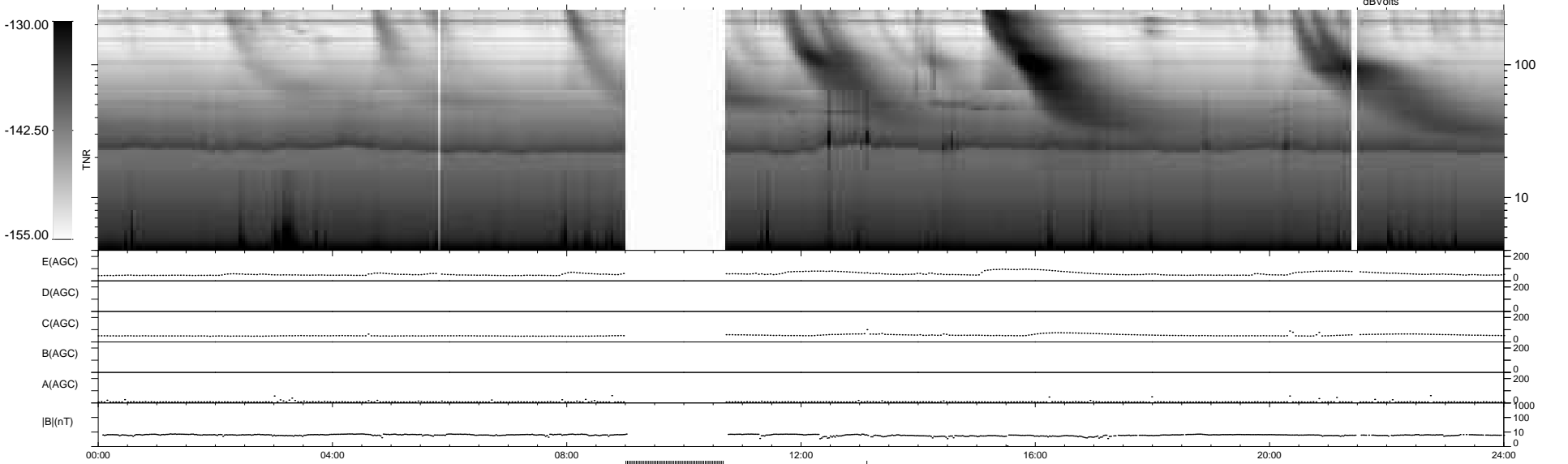
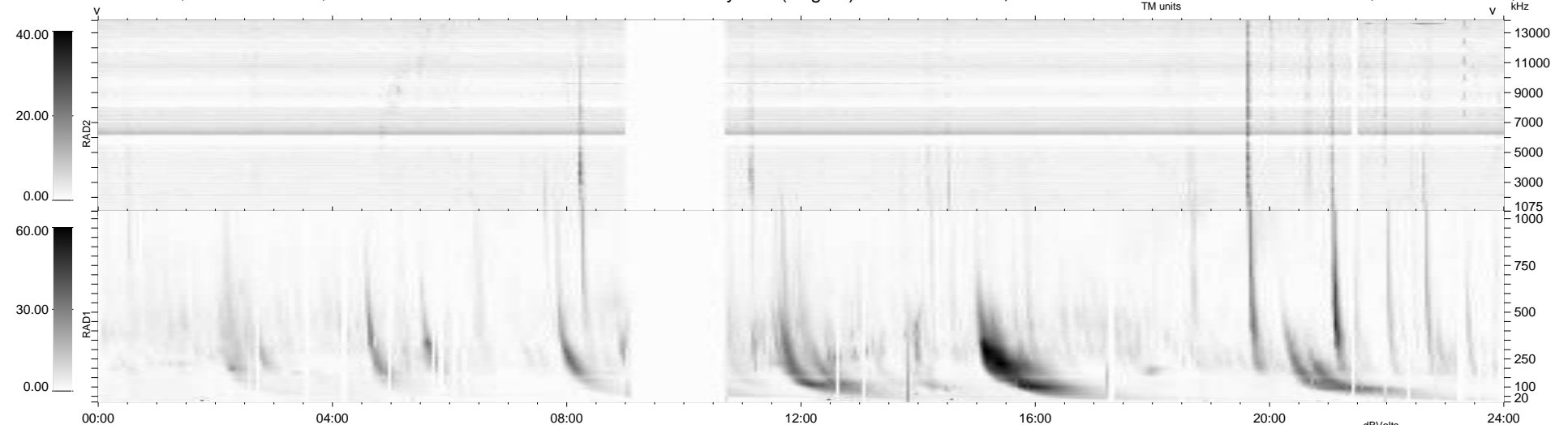
36 bad + 836 good MF/939MF projected (89%) - 67 missing MFs
Avg interval = 180 secs
Re = 197.41 (194.97, 26.99, -15.08 GSE)

windlib 2.0b

LZ version = v01

WIND/WAVES Summary Plot (Page 1) for 13-JAN-2015, DOY = 13

DAILY 2015-01-14 13:46:03
Re = 198.21 (195.25, 30.62, -15.04 GSE)



RAD2
Antenna Ey
Mode LIN(1)
SUM/SEP SEP
Toggle OFF

RAD1
Antenna
Mode
SUM/SEP
Toggle

TNR
Antenna ExEy
Mode A-32
Sweep ACE