

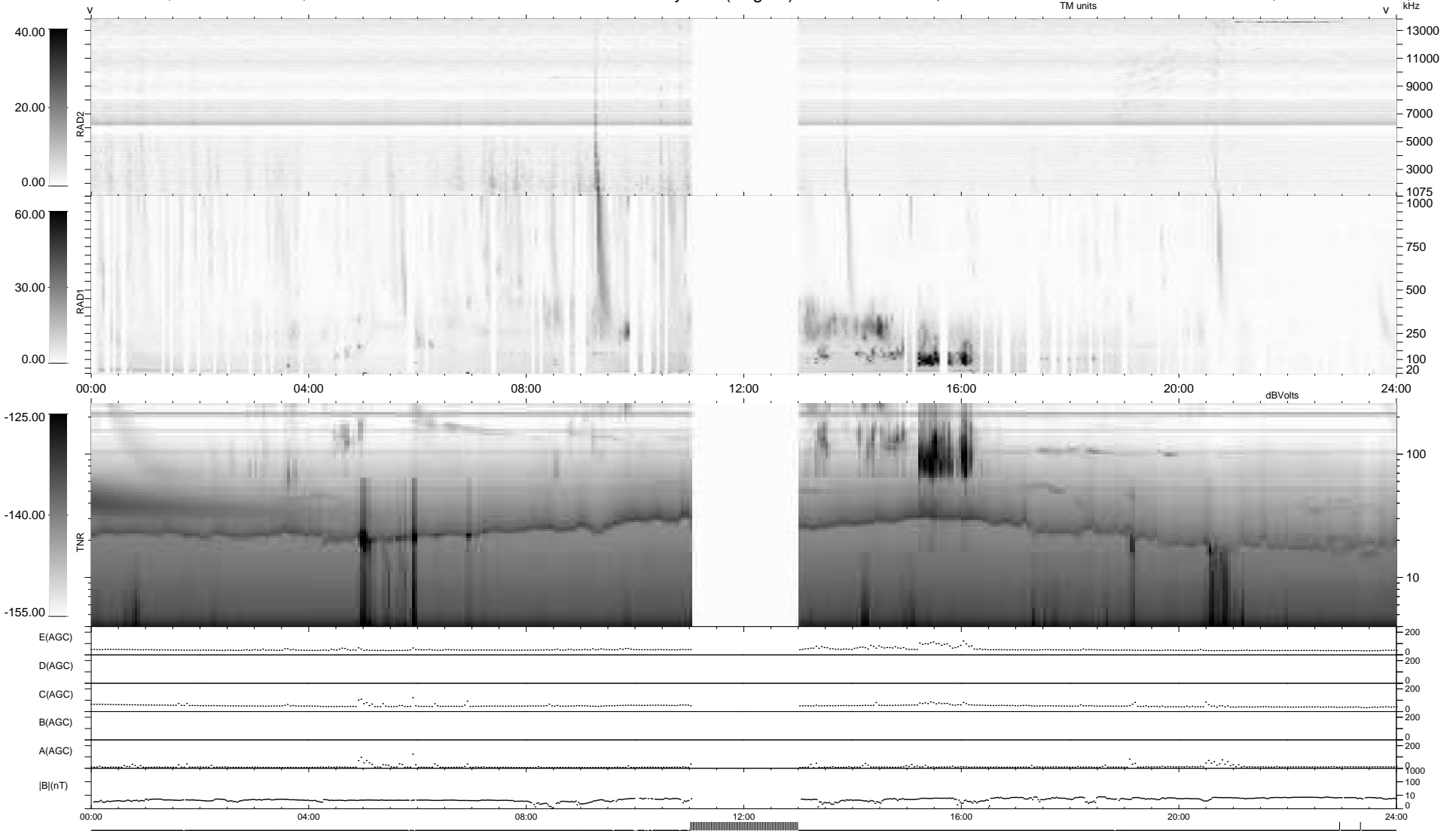
13 bad + 846 good MF/939MF projected (90%) - 80 missing MFs
 Avg interval = 180 secs
 Re = 196.08 (194.55, -20.78, -12.89 GSE)

windlib 2.0b

LZ version = v01

WIND/WAVES Summary Plot (Page 1) for 31-DEC-2014, DOY = 365

DAILY 2015-01-05 14:46:05
 Re = 195.54 (194.33, -17.14, -13.23 GSE)



RAD2
 Antenna Ey
 Mode LIN(1)
 SUM/SEP SEP
 Toggle OFF
 RAD1
 Antenna
 Mode
 SUM/SEP
 Toggle
 TNR
 Antenna ExEy
 Mode A-32
 Sweep ACE