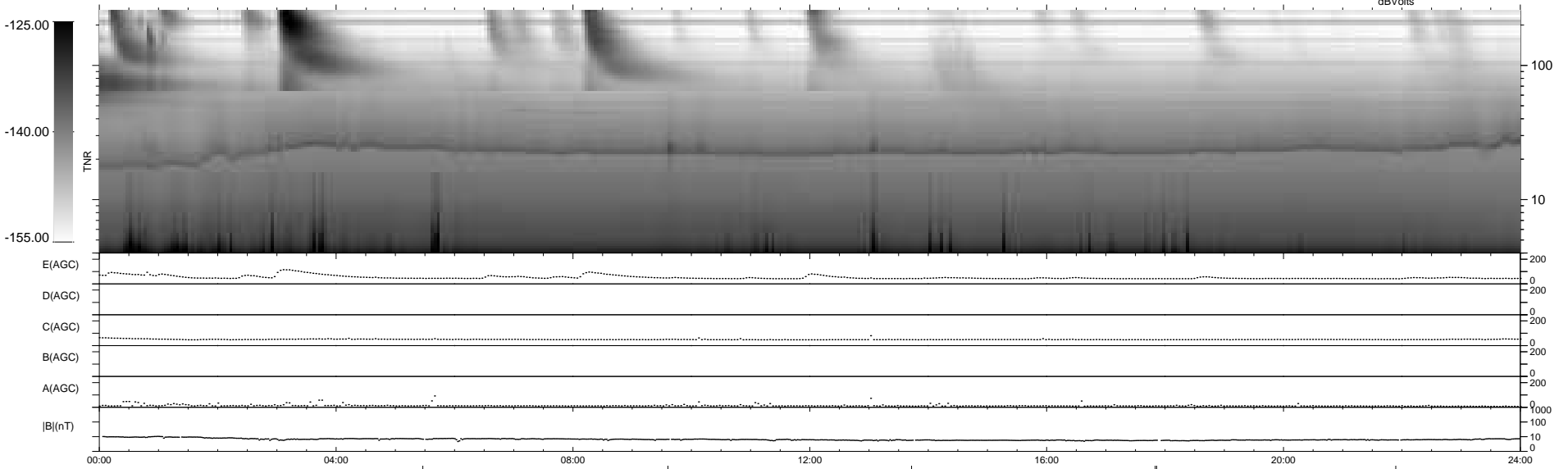
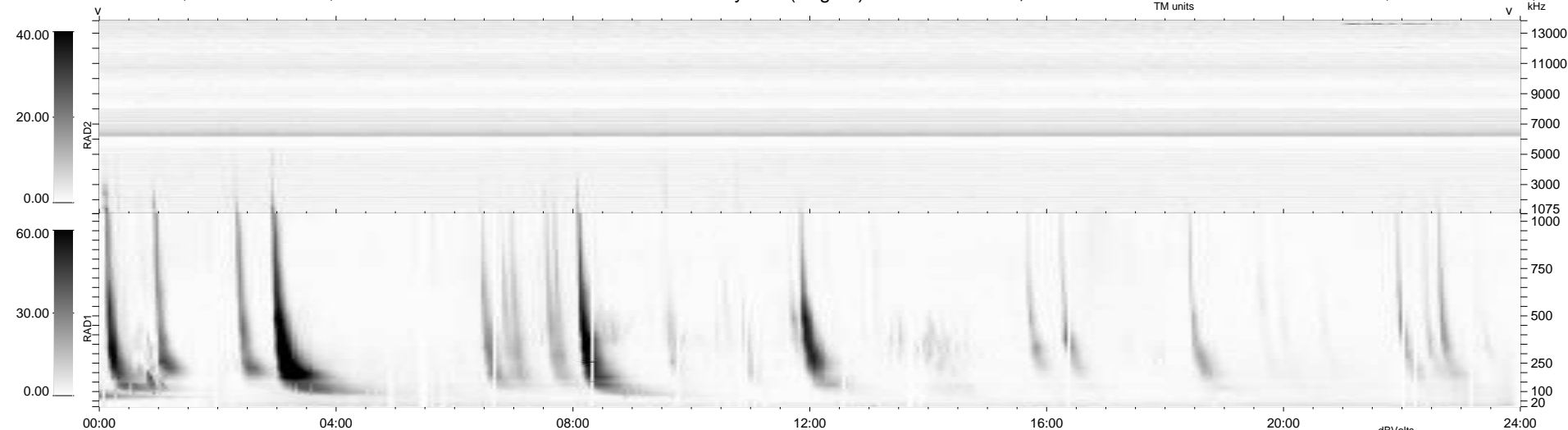


1 bad + 932 good MF/939MF projected (99%) - 6 missing MFs
 Avg interval = 180 secs
 Re = 199.21 (195.73, -35.34, -11.29 GSE)

windlib 2.0b LZ version = v02
 DAILY 2015-01-16 12:47:46
 Re = 198.31 (195.40, -31.75, -11.72 GSE)

WIND/WAVES Summary Plot (Page 1) for 27-DEC-2014, DOY = 361



RAD2
 Antenna Ey
 Mode LIN(1)
 SUM/SEP SEP
 Toggle OFF
 RAD1
 Antenna Ex
 Mode LIS(2/4)
 SUM/SEP SUM
 Toggle OFF
 TNR
 Antenna ExEy
 Mode A-32
 Sweep ACE