

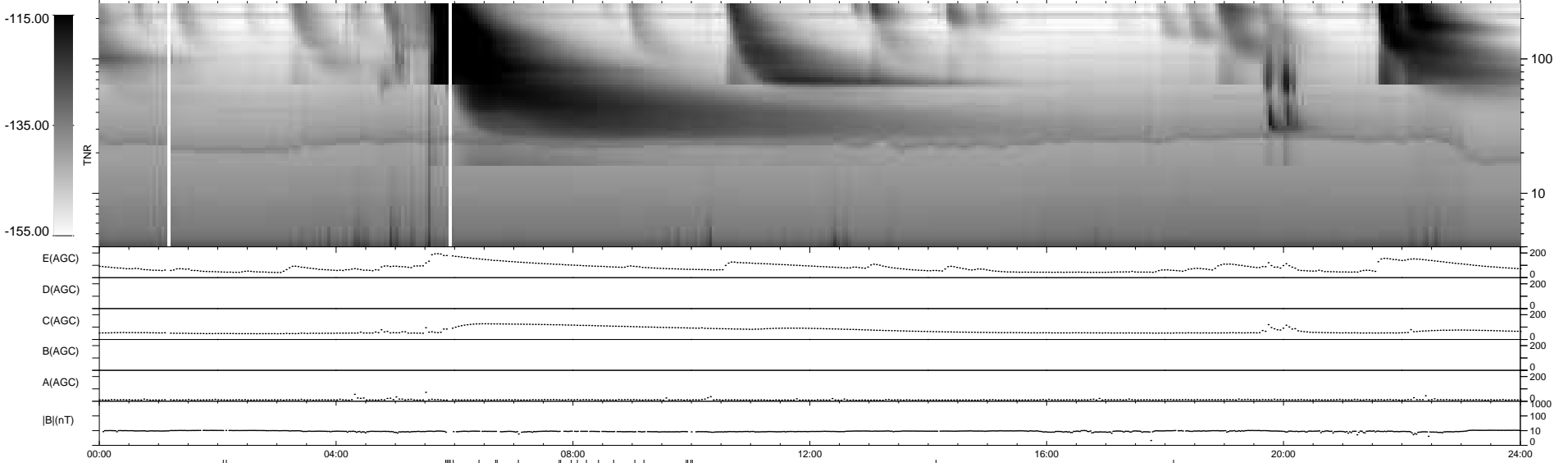
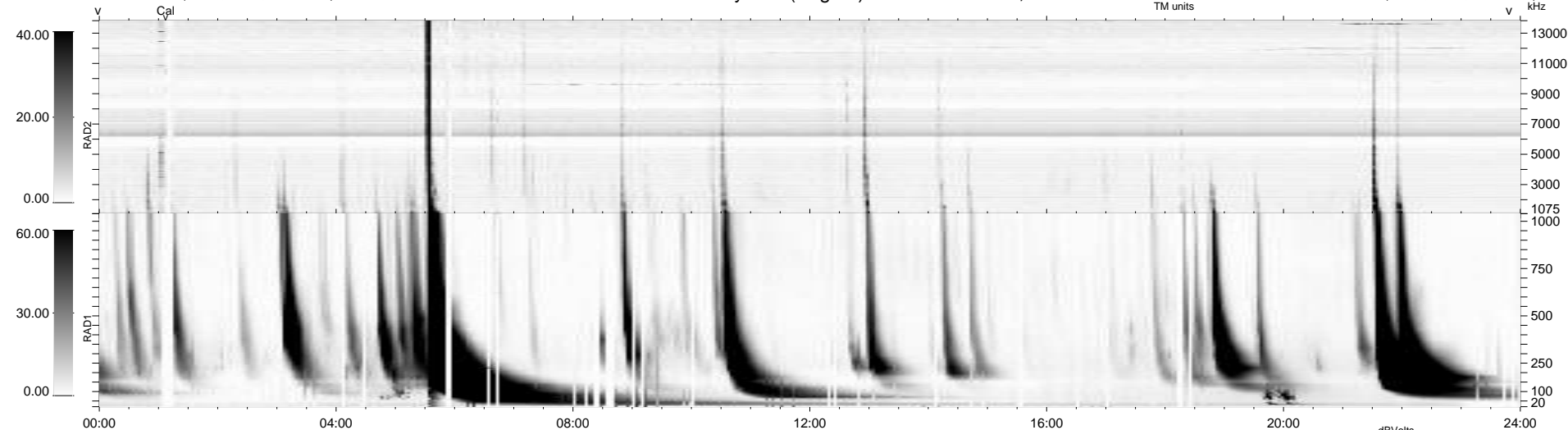
2 bad + 911 good MF/939MF projected (97%) - 26 missing MFs
 Avg interval = 180 secs
 Re = 200.18 (196.06, -38.93, -10.84 GSE)

windlib 2.0b

LZ version = v02

WIND/WAVES Summary Plot (Page 1) for 26-DEC-2014, DOY = 360

DAILY 2014-12-30 13:46:59
 Re = 199.22 (195.73, -35.37, -11.29 GSE)



E(AGC) 200
 D(AGC) 200
 C(AGC) 200
 B(AGC) 200
 A(AGC) 200
 |B|(nT) 1000
 100
 10
 0

RAD2
 Antenna Ey
 Mode LIN(1)
 SUM/SEP SEP
 Toggle OFF
 RAD1
 Antenna Ex
 Mode LIS(2,4)
 SUM/SEP SUM
 Toggle OFF
 TNR
 Antenna ExEy
 Mode A-32
 Sweep ACE