

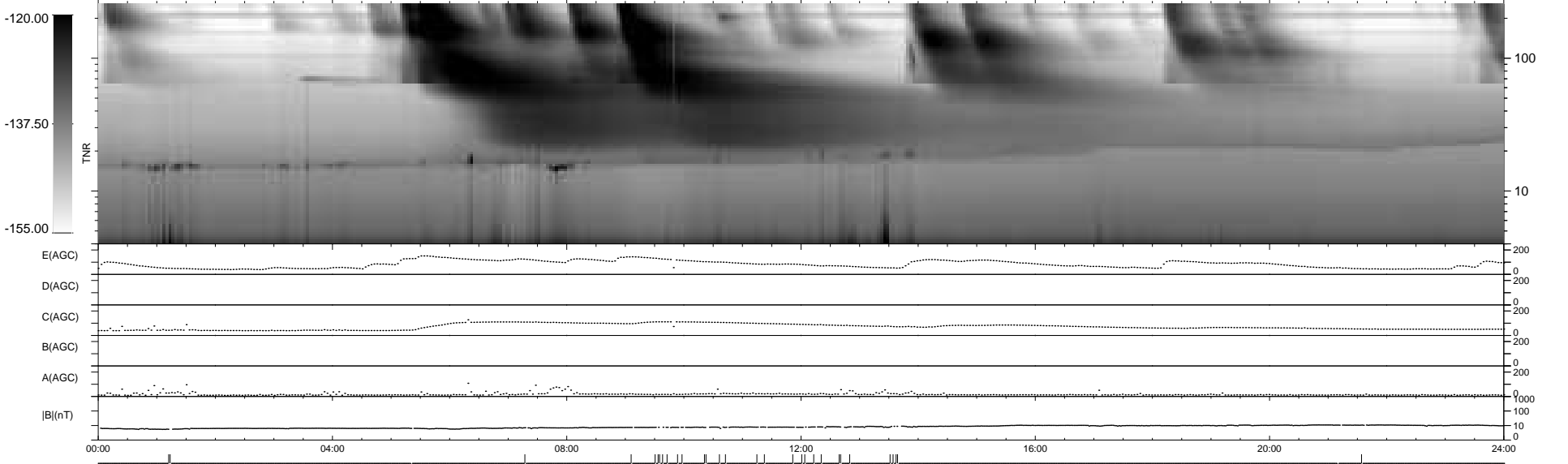
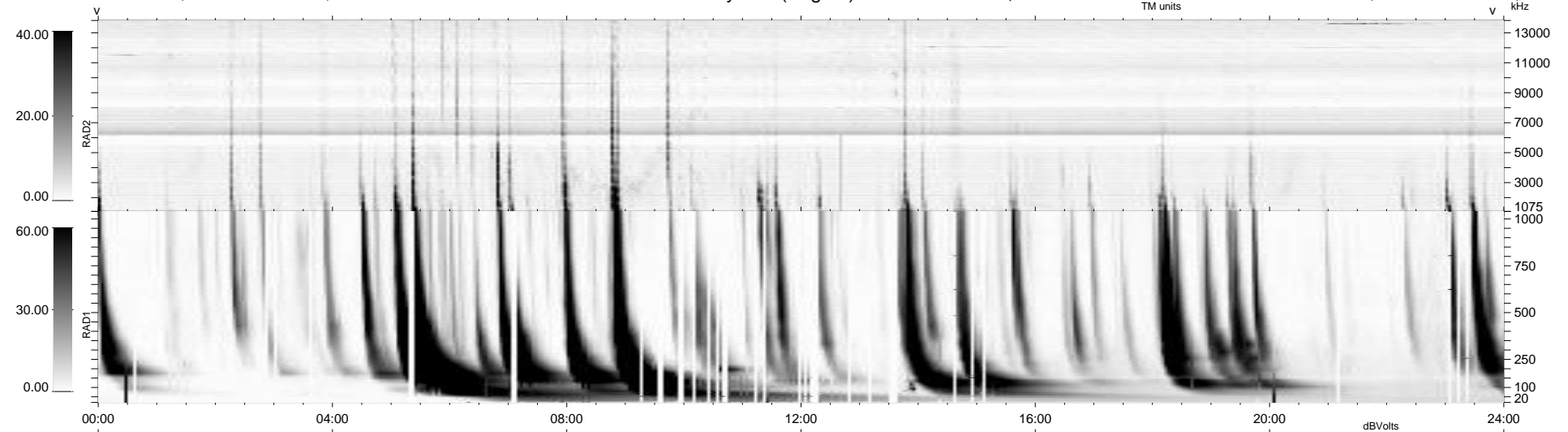
2 bad + 908 good MF/940MF projected (96%) - 30 missing MFs
Avg interval = 180 secs
Re = - 201.21 (196.40, -42.49, -10.38 GSE)

windlib 2.0b

LZ version = v02

WIND/WAVES Summary Plot (Page 1) for 25-DEC-2014, DOY = 359

DAILY 2015-01-20 19:46:08
Re = 200.19 (196.06, -38.96, -10.84 GSE)



E(AGC) 0 200
D(AGC) 0 200
C(AGC) 0 200
B(AGC) 0 200
A(AGC) 0 200
|B|(nT) 0 1000
0 100
0 10

00:00 04:00 08:00 12:00 16:00 20:00 24:00

RAD2
Antenna Ey
Mode LIN(1)
SUM/SEP SEP
Toggle OFF

RAD1
Antenna Ex
Mode LIS(2,4)
SUM/SEP SUM
Toggle OFF

TNR
Antenna ExEy
Mode A-32
Sweep ACE