

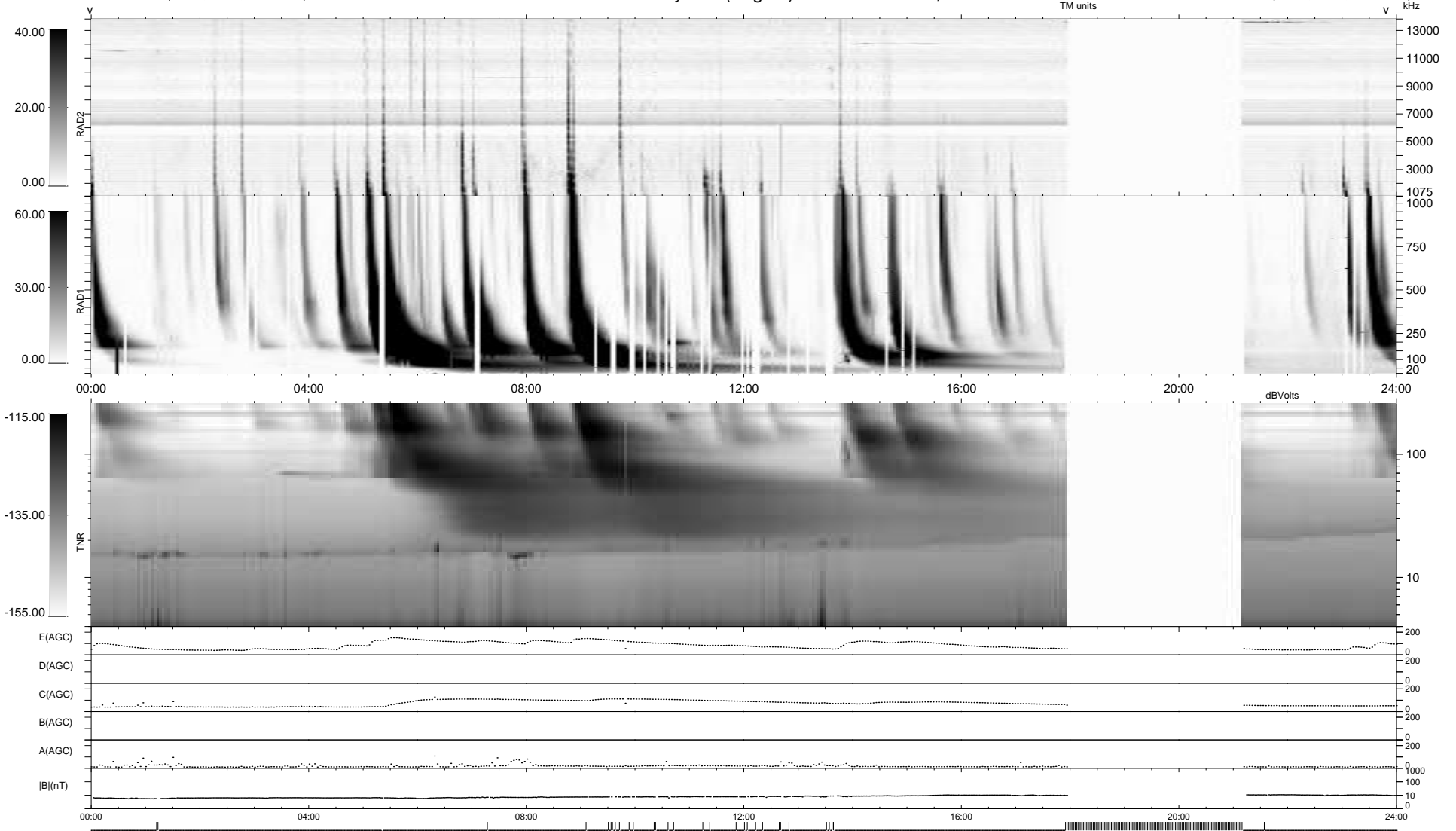
1 bad + 781 good MF/940MF projected (83%) - 158 missing MFs  
 Avg interval = 180 secs  
 Re = - 201.21 (196.40, -42.49, -10.38 GSE)

windlib 2.0b

LZ version = v01

### WIND/WAVES Summary Plot (Page 1) for 25-DEC-2014, DOY = 359

DAILY 2014-12-26 22:46:05  
 Re = 200.19 (196.06, -38.96, -10.84 GSE)



```

RAD2
Antenna Ey .....
Mode LIN(1) .....
SUM/SEP SEP .....
Toggle OFF .....

RAD1
Antenna Ex .....
Mode LIS(2,4) .....
SUM/SEP SUM .....
Toggle OFF .....

TNR
Antenna ExEy .....
Mode A-32 .....
Sweep ACE .....
  
```