

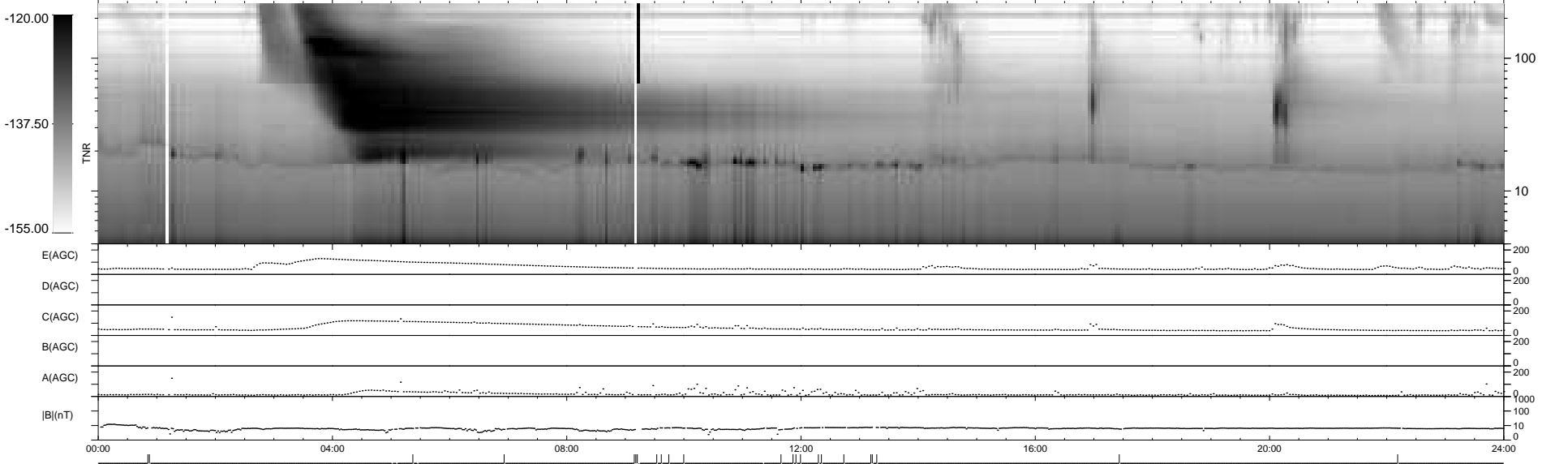
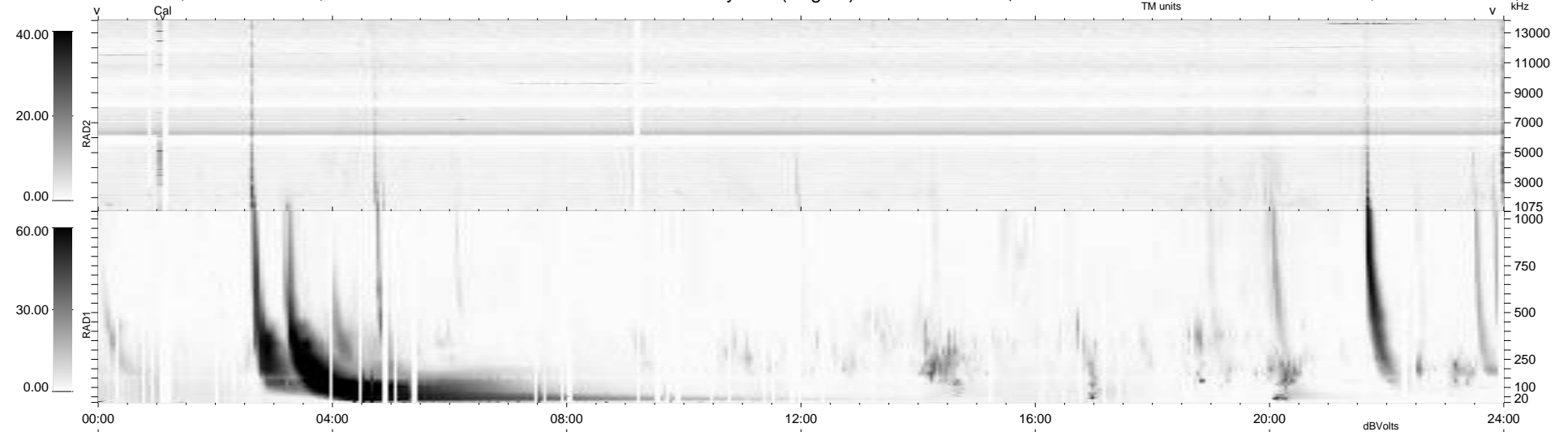
5 bad + 911 good MF/939MF projected (97%) - 23 missing MFs  
 Avg interval = 180 secs  
 Re = - 202.28 (196.73, -46.00, -9.90 GSE)

windlib 2.0b

LZ version = v01

### WIND/WAVES Summary Plot (Page 1) for 24-DEC-2014, DOY = 358

DAILY 2014-12-25 19:46:03  
 Re = 201.22 (196.40, -42.52, -10.37 GSE)



```

RAD2
Antenna Ey .....
Mode LIN(1) .....
SUM/SEP SEP .....
Toggle OFF .....

RAD1
Antenna Ex .....
Mode LIS(2,4) .....
SUM/SEP SUM .....
Toggle OFF .....

TNR
Antenna ExEy .....
Mode A-32 .....
Sweep ACE .....
  
```