

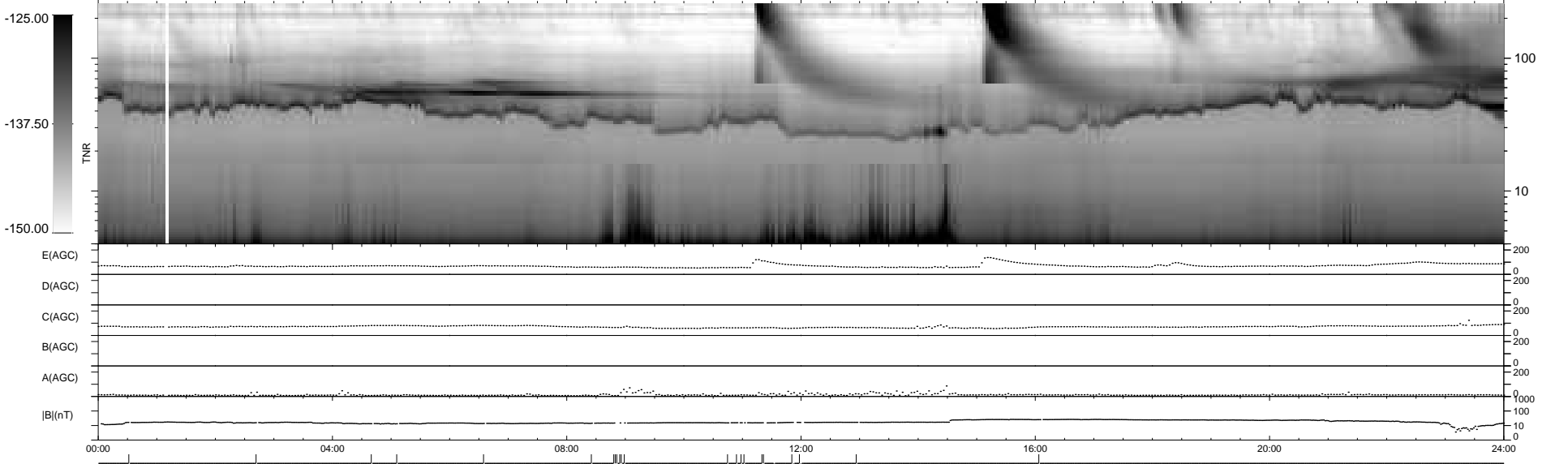
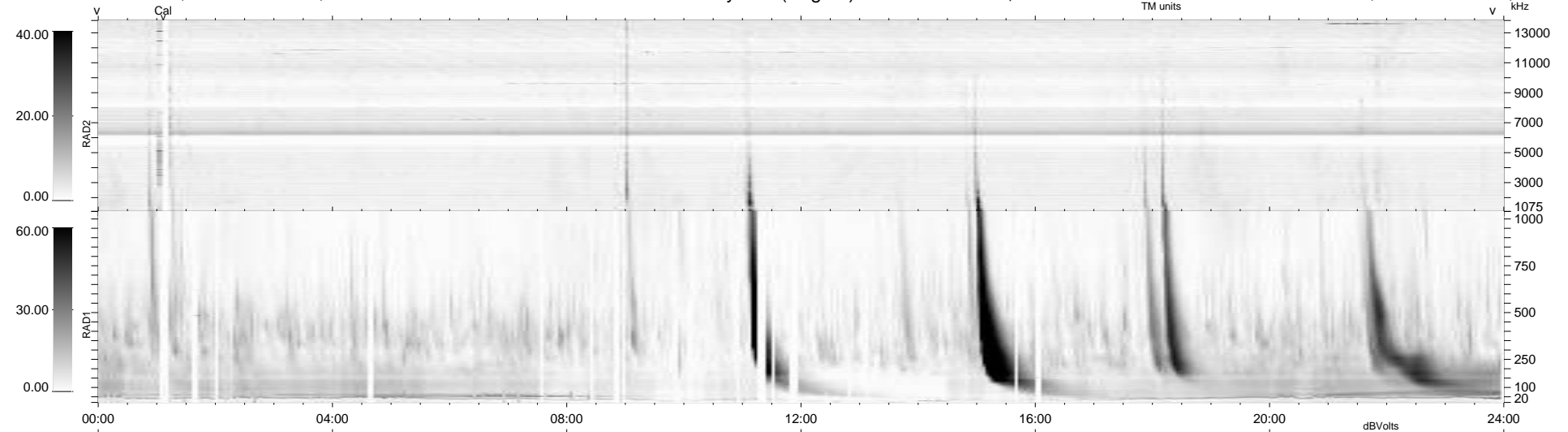
3 bad + 914 good MF/939MF projected (97%) - 22 missing MFs
 Avg interval = 180 secs
 Re = -204.53 (197.39, -52.83, -8.89 GSE)

windlib 2.0b

LZ version = v02

WIND/WAVES Summary Plot (Page 1) for 22-DEC-2014, DOY = 356

DAILY 2014-12-29 12:46:04
 Re = 203.40 (197.07, -49.47, -9.40 GSE)



RAD2
 Antenna Ey
 Mode LIN(1)
 SUM/SEP SEP
 Toggle OFF
 RAD1
 Antenna Ex
 Mode LIS(2,4)
 SUM/SEP SUM
 Toggle OFF
 TNR
 Antenna ExEy
 Mode A-32
 Sweep ACE