

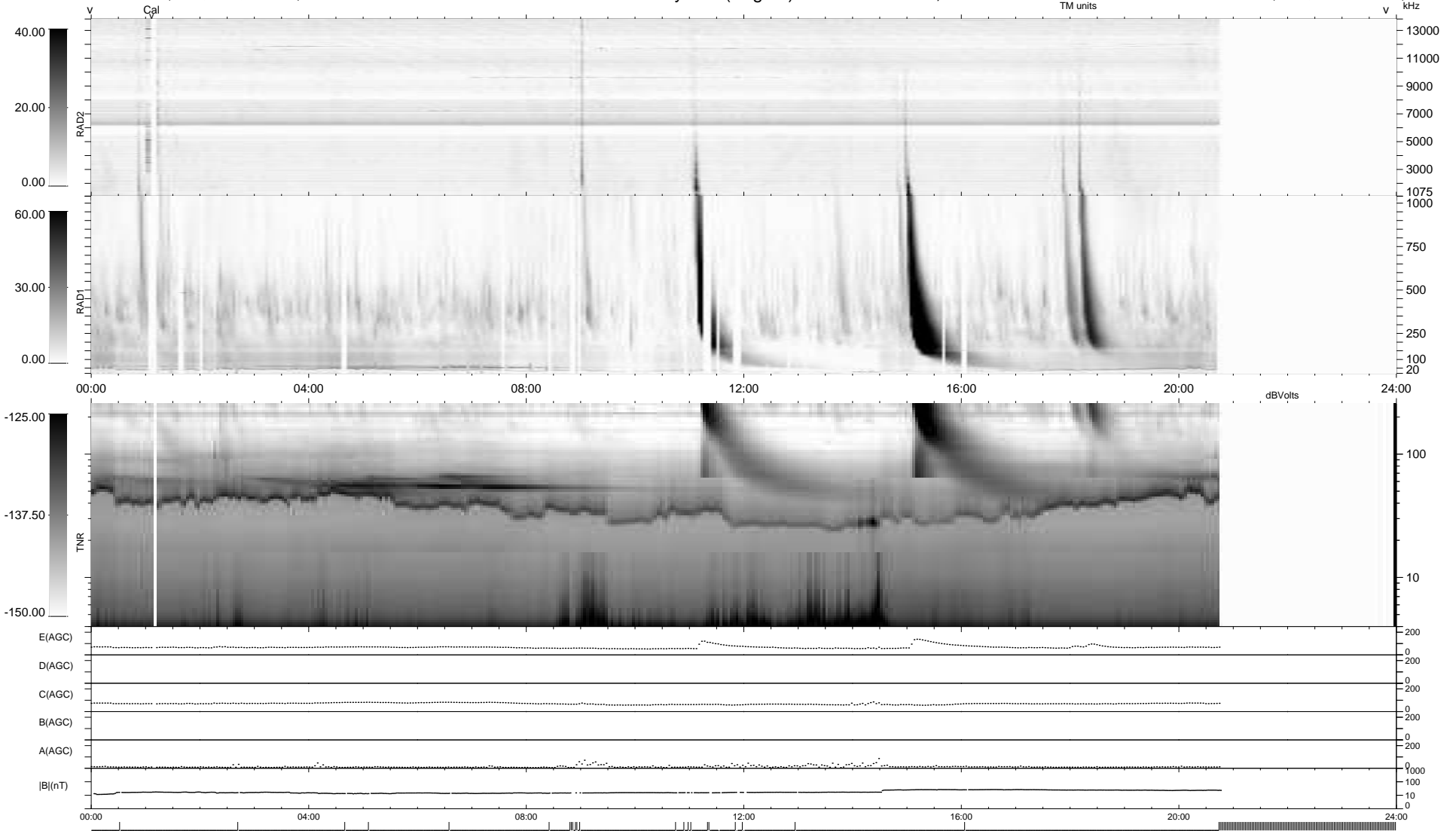
3 bad + 786 good MF/939MF projected (83%) - 150 missing MFs
 Avg interval = 180 secs
 Re = 204.53 (197.39, -52.83, -8.89 GSE)

windlib 2.0b

LZ version = v01

WIND/WAVES Summary Plot (Page 1) for 22-DEC-2014, DOY = 356

DAILY 2014-12-23 21:46:04
 Re = 203.40 (197.07, -49.47, -9.40 GSE)



```

RAD2
Antenna Ey .....
Mode LIN(1) .....
SUM/SEP SEP .....
Toggle OFF .....

RAD1
Antenna Ex .....
Mode LIS(2,4) .....
SUM/SEP SUM .....
Toggle OFF .....

TNR
Antenna ExEy .....
Mode A-32 .....
Sweep ACE .....
  
```