

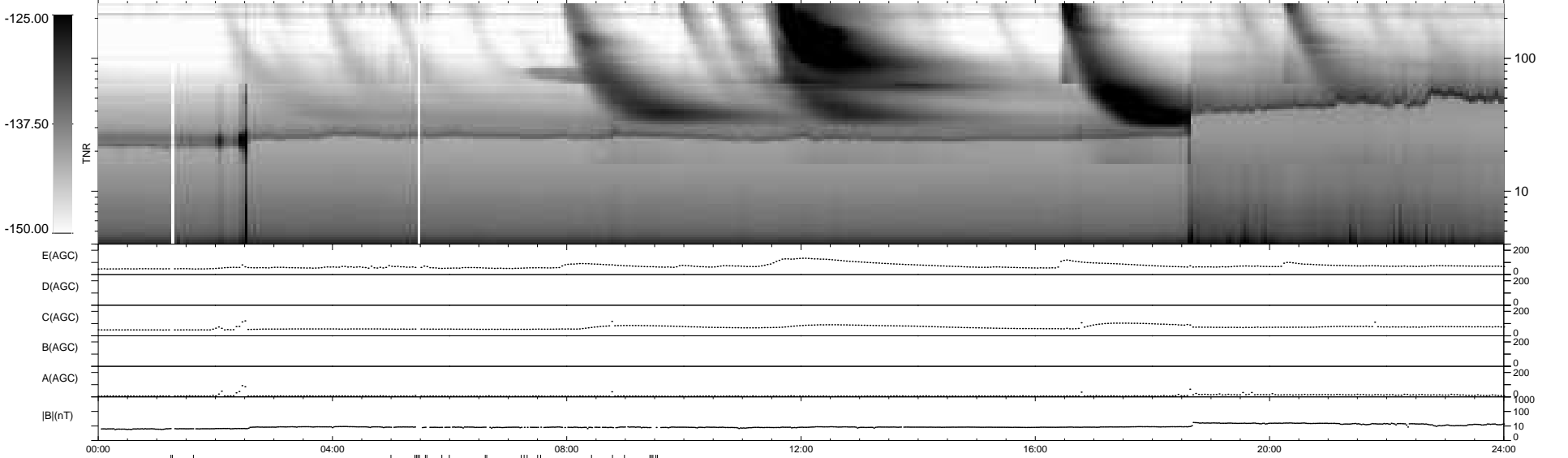
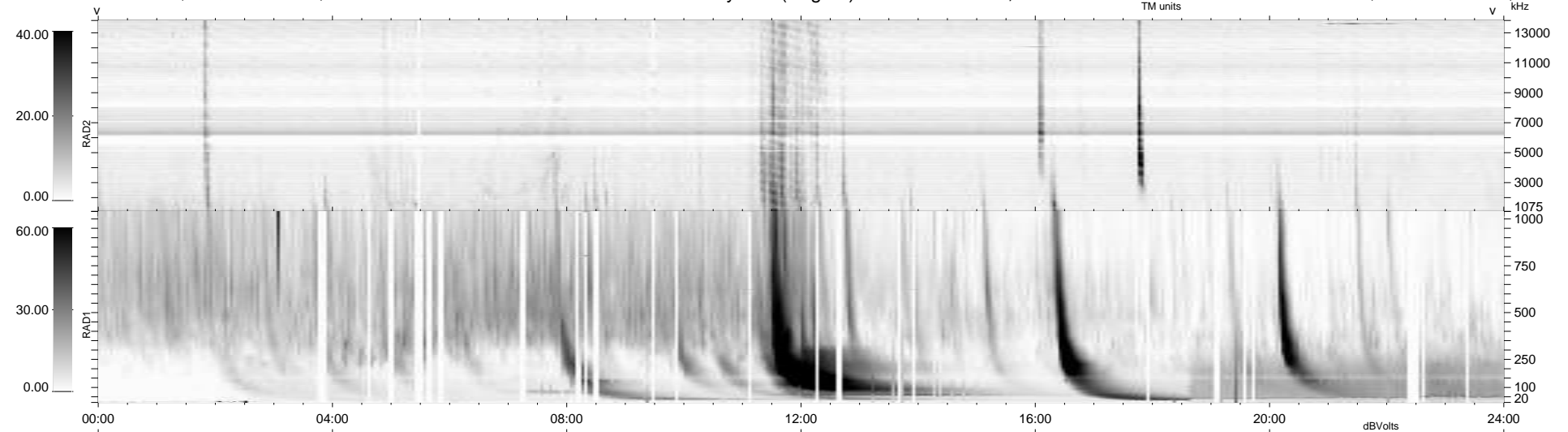
4 bad + 908 good MF/939MF projected (96%) - 27 missing MFs
 Avg interval = 180 secs
 Re = -205.68 (197.70, -56.12, -8.37 GSE)

windlib 2.0b

LZ version = v02

WIND/WAVES Summary Plot (Page 1) for 21-DEC-2014, DOY = 355

DAILY 2014-12-29 13:46:03
 Re = 204.54 (197.39, -52.85, -8.89 GSE)



RAD2
 Antenna Ey
 Mode LIN(1)
 SUM/SEP SEP
 Toggle OFF
 RAD1
 Antenna Ex
 Mode LIS(2,4)
 SUM/SEP SUM
 Toggle OFF
 TNR
 Antenna ExEy
 Mode A-32
 Sweep ACE