

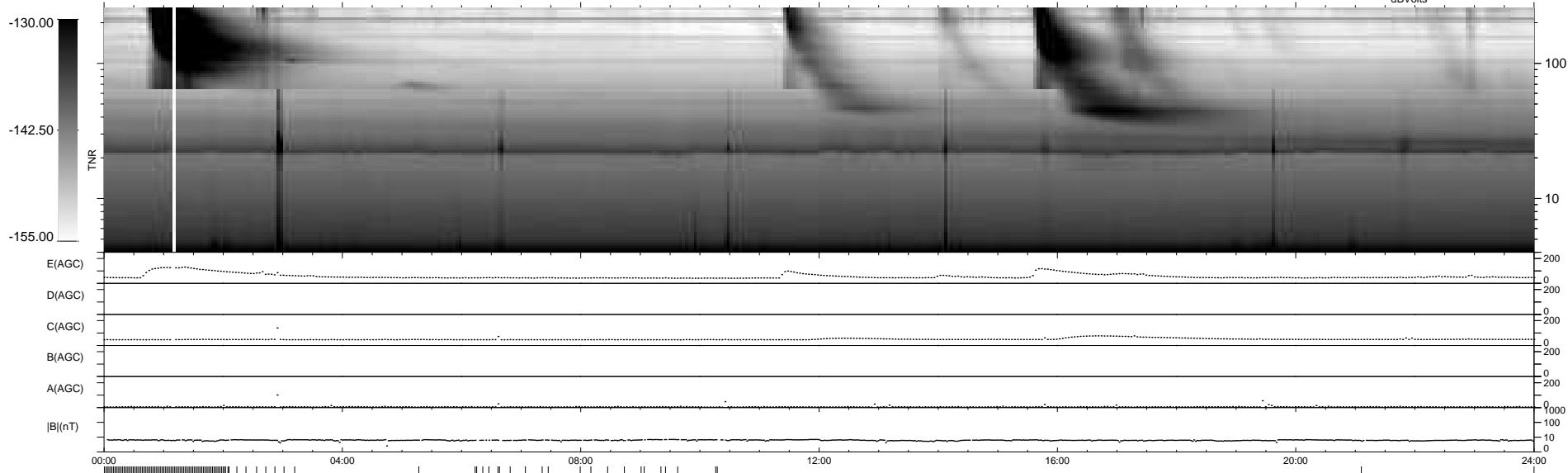
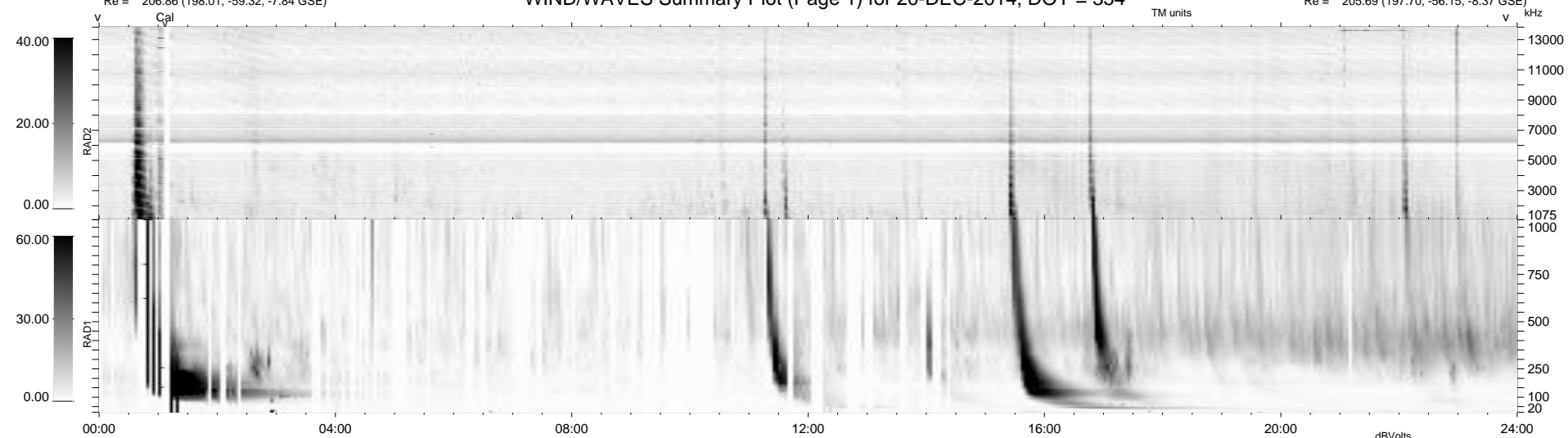
3 bad + 903 good MF/1020MF projected (88%) - 114 missing MFs  
Avg interval = 180 secs  
Re = 206.86 (198.01, -59.32, -7.84 GSE)

windlib 2.0b

LZ version = v01

### WIND/WAVES Summary Plot (Page 1) for 20-DEC-2014, DOY = 354

DAILY 2014-12-21 19:46:04  
Re = 205.69 (197.70, -56.15, -8.37 GSE)



RAD2  
Antenna Ey .....  
Mode LIN(1) .....  
SUM/SEP SEP .....  
Toggle OFF .....  
RAD1  
Antenna .....  
Mode .....  
SUM/SEP .....  
Toggle .....  
TNR  
Antenna ExEy .....  
Mode A-32 .....  
Sweep ACE .....