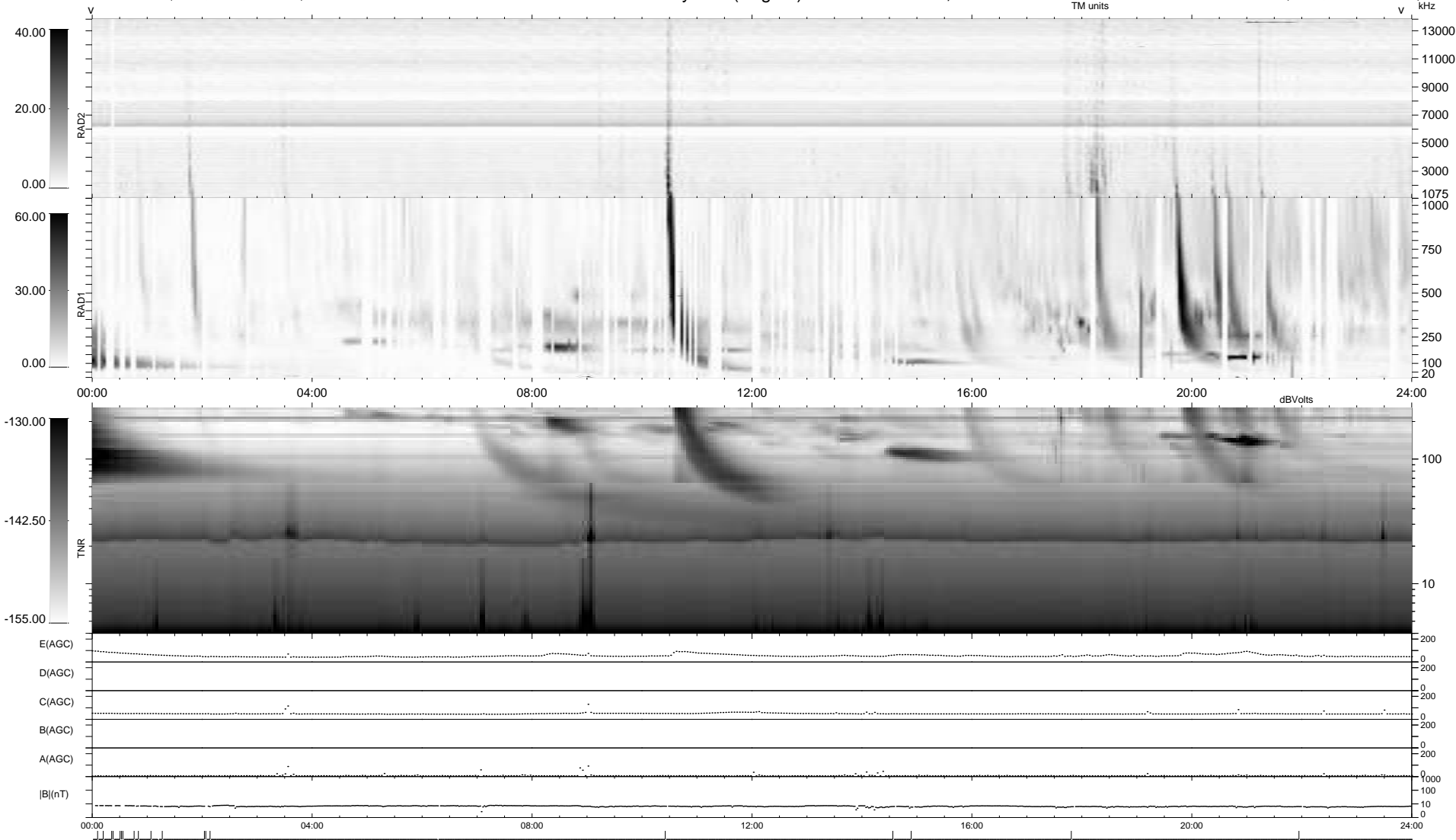


2 bad + 918 good MF/939MF projected (97%) - 19 missing MFs
 Avg interval = 180 secs
 Re = 208.04 (198.32, -62.41, -7.30 GSE)

windlib 2.0b LZ version = v01
 DAILY 2014-12-20 17:46:05
 Re = 206.86 (198.01, -59.34, -7.84 GSE)

WIND/WAVES Summary Plot (Page 1) for 19-DEC-2014, DOY = 353



RAD2
 Antenna Ey
 Mode LIN(1)
 SUM/SEP SEP
 Toggle OFF
 RAD1
 Antenna Ex
 Mode LIS(2/4)
 SUM/SEP SUM
 Toggle OFF
 TNR
 Antenna ExEy
 Mode A-32
 Sweep ACE