

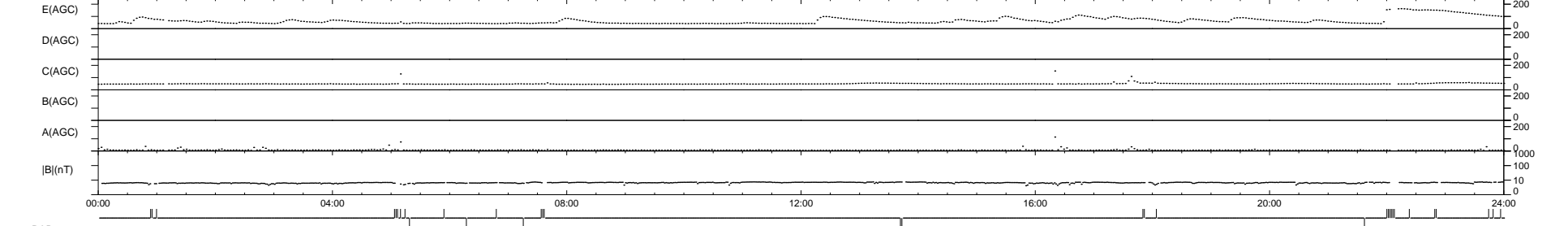
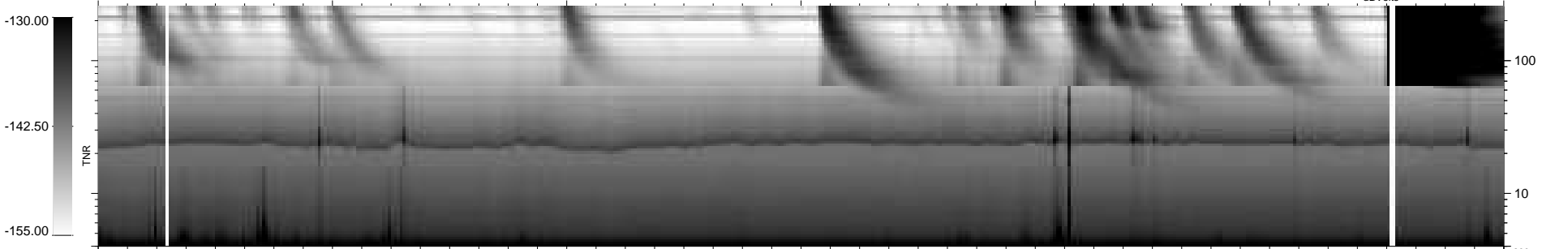
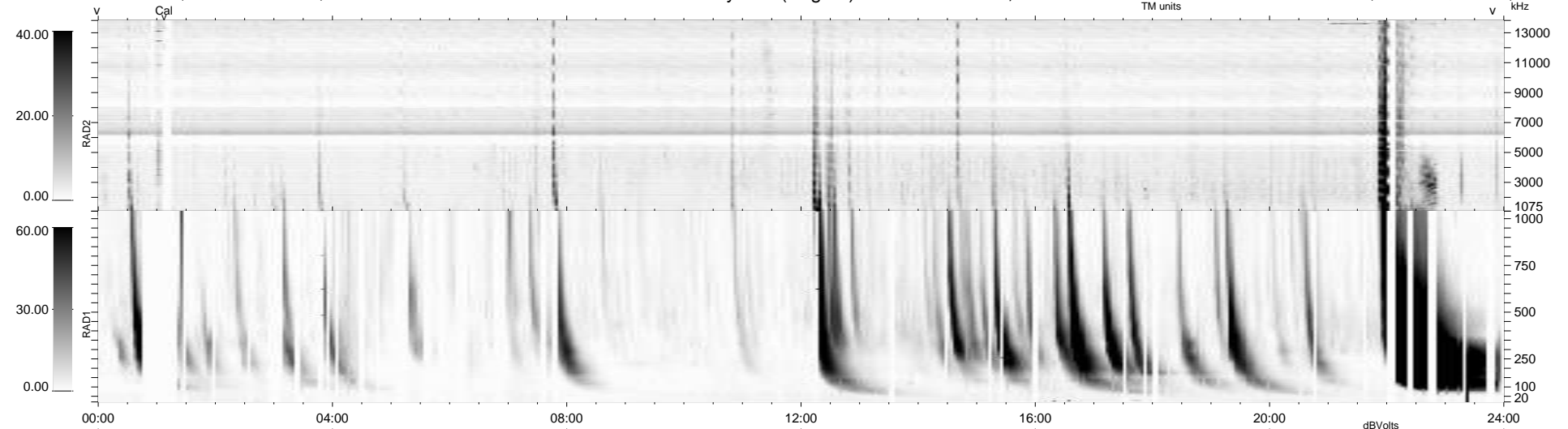
6 bad + 905 good MF/939MF projected (96%) - 28 missing MFs
 Avg interval = 180 secs
 Re = 209.24 (198.64, -65.39, -6.75 GSE)

windlib 2.0b

LZ version = v01

WIND/WAVES Summary Plot (Page 1) for 18-DEC-2014, DOY = 352

DAILY 2014-12-19 18:46:04
 Re = 208.05 (198.33, -62.43, -7.30 GSE)



```

RAD2
Antenna Ey .....
Mode LIN(1) .....
SUM/SEP SEP .....
Toggle OFF .....

RAD1
Antenna Ex .....
Mode LIS(2,4) .....
SUM/SEP SUM .....
Toggle OFF .....

TNR
Antenna ExEy .....
Mode A-32 .....
Sweep ACE .....
  
```