

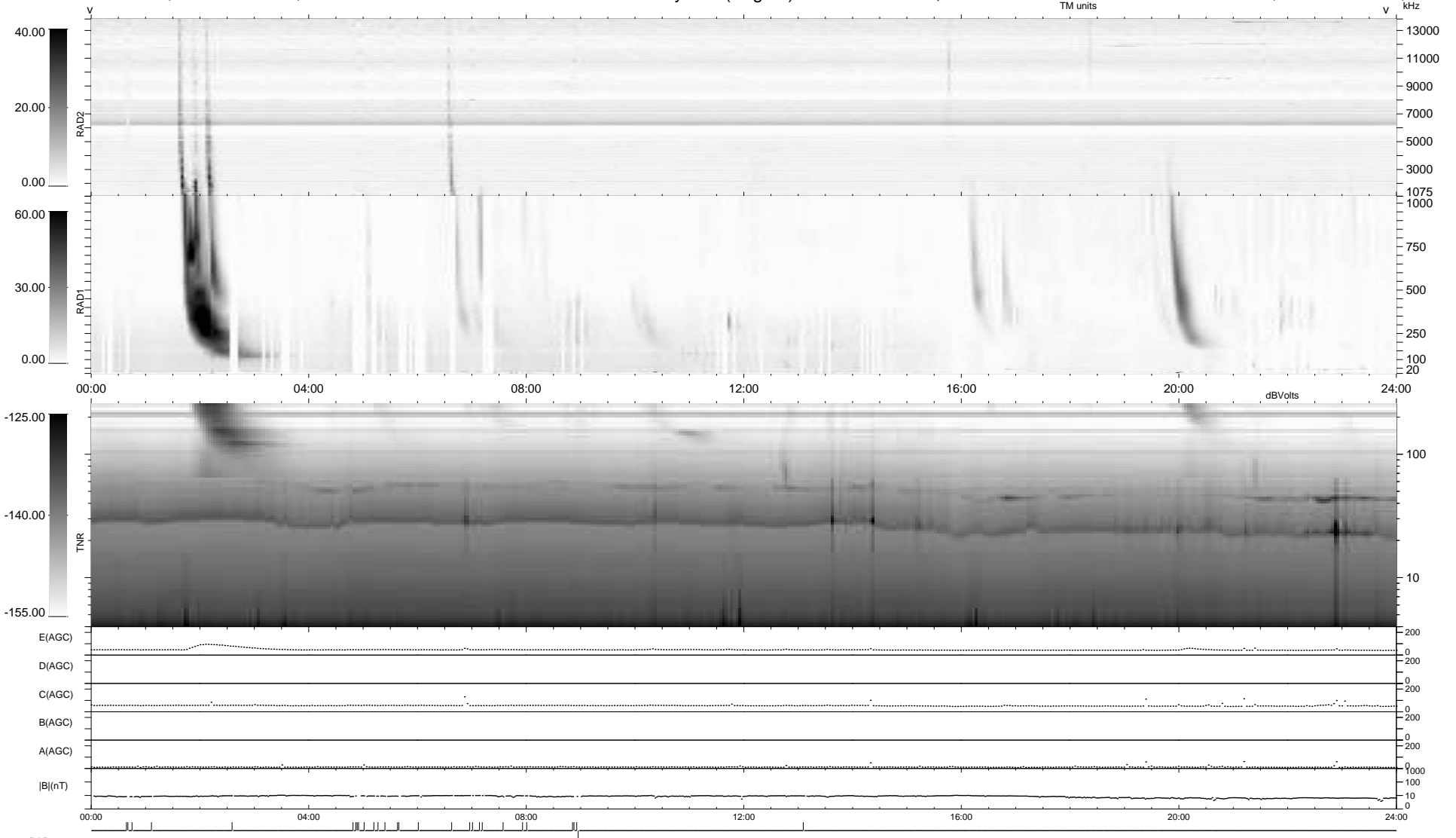
1 bad + 910 good MF/939MF projected (96%) - 28 missing MFs
 Avg interval = 180 secs
 Re = -212.88 (199.70, -73.56, -5.03 GSE)

windlib 2.0b

LZ version = v01

WIND/WAVES Summary Plot (Page 1) for 15-DEC-2014, DOY = 349

DAILY 2014-12-16 10:46:59
 Re = 211.66 (199.33, -70.98, -5.61 GSE)



```

RAD2
Antenna Ey .....
Mode LIN(1) .....
SUM/SEP SEP .....
Toggle OFF .....

RAD1
Antenna Ex .....
Mode LIS(2,4) .....
SUM/SEP SUM .....
Toggle OFF .....

TNR
Antenna ExEy .....
Mode A-32 .....
Sweep ACE .....
  
```