

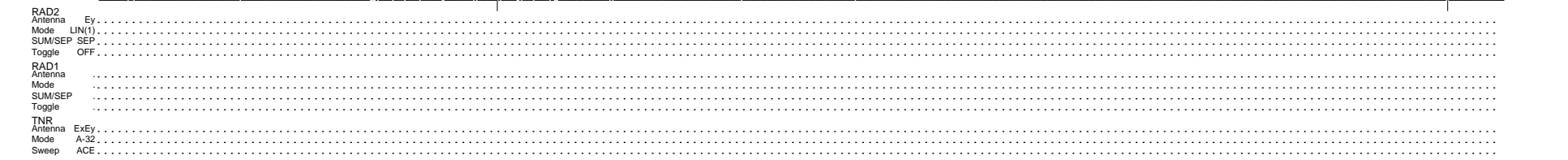
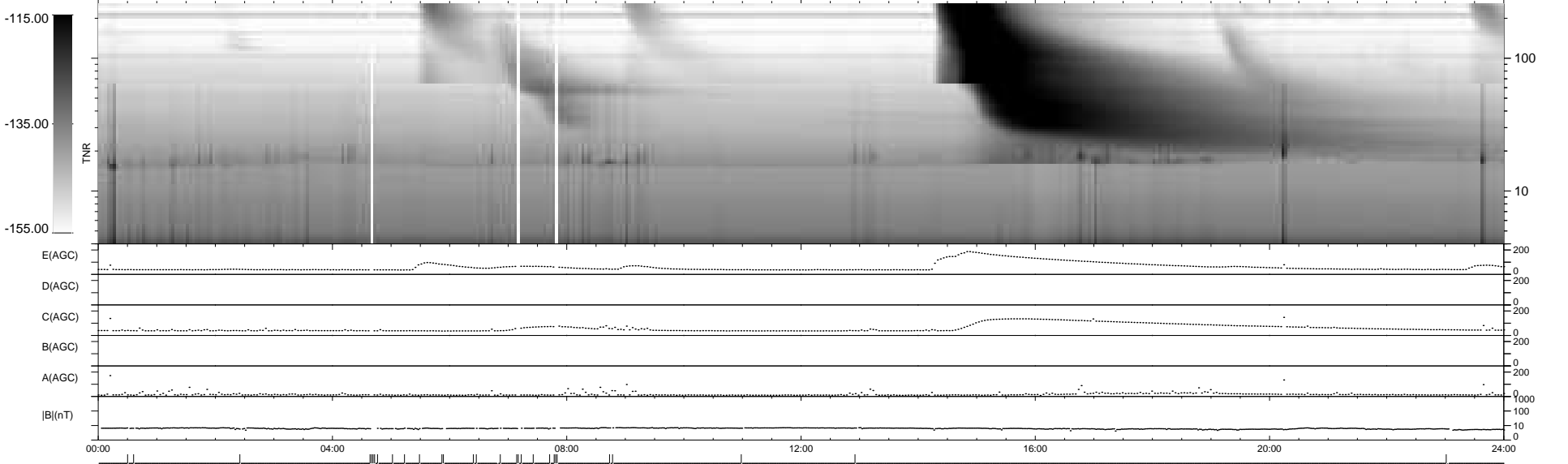
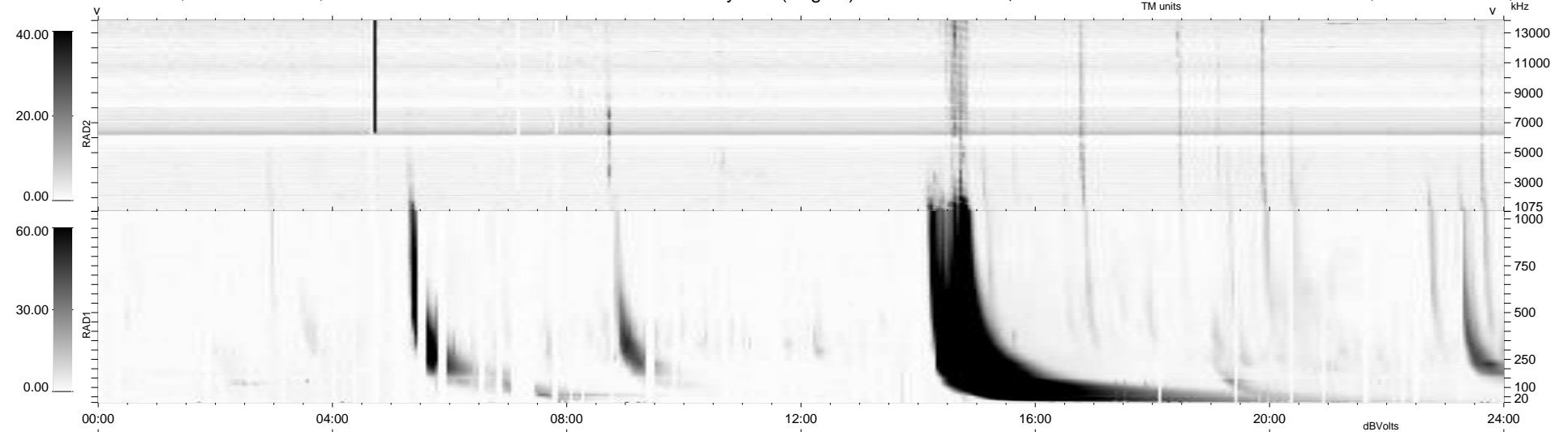
2 bad + 908 good MF/939MF projected (96%) - 29 missing MFs
 Avg interval = 180 secs
 Re = - 215.35 (200.56, -78.33, -3.85 GSE)

windlib 2.0b

LZ version = v02

WIND/WAVES Summary Plot (Page 1) for 13-DEC-2014, DOY = 347

DAILY 2014-12-15 11:46:03
 Re = 214.12 (200.12, -76.03, -4.44 GSE)



RAD2
 Antenna Ey
 Mode LIN(1)
 SUM/SEP SEP
 Toggle OFF
 RAD1
 Antenna
 Mode
 SUM/SEP
 Toggle
 TNR
 Antenna ExEy
 Mode A-32
 Sweep ACE