

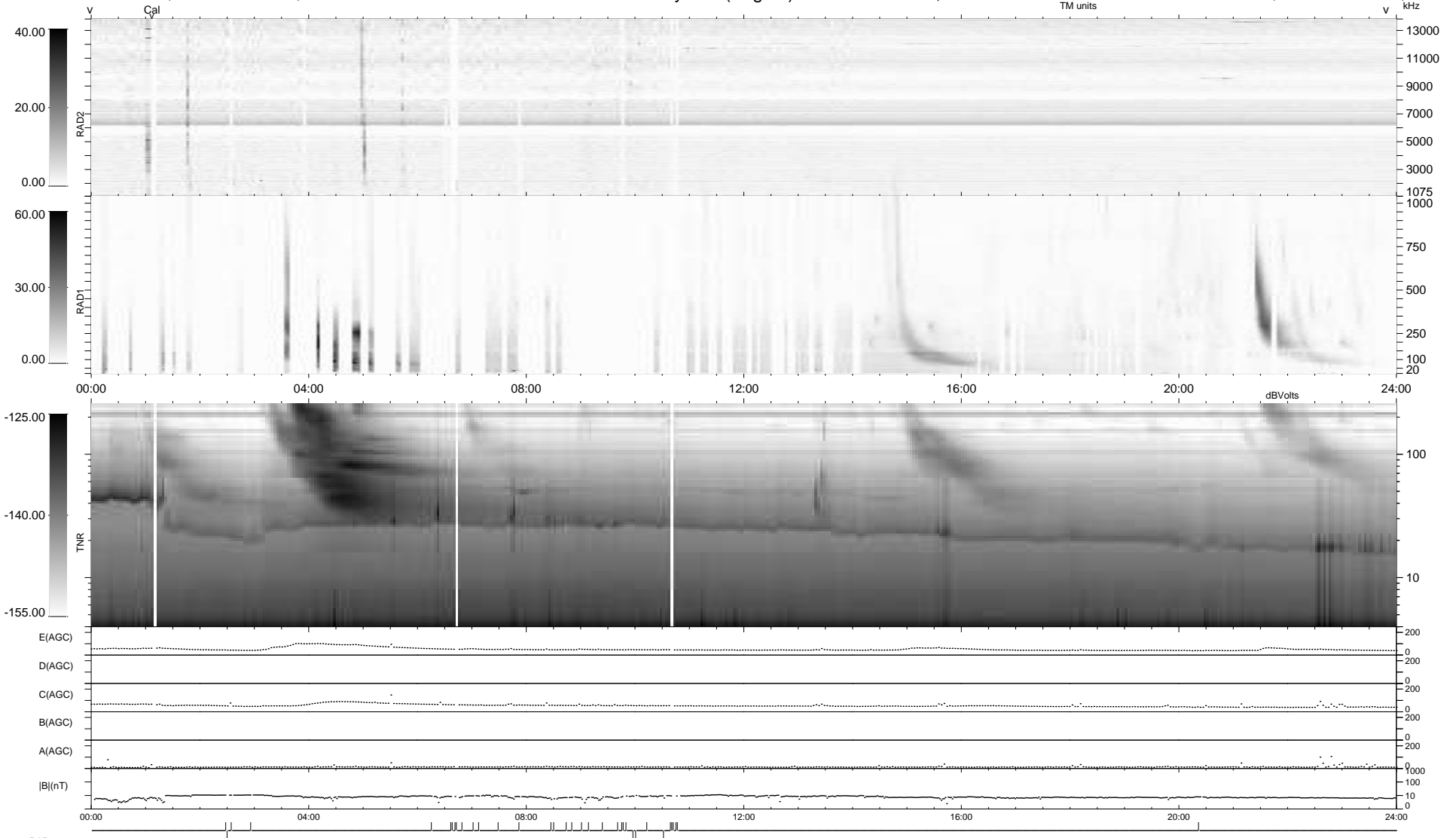
4 bad + 904 good MF/939MF projected (96%) - 31 missing MFs
 Avg interval = 180 secs
 Re = 216.60 (201.06, -80.51, -3.24 GSE)

windlib 2.0b

LZ version = v01

WIND/WAVES Summary Plot (Page 1) for 12-DEC-2014, DOY = 346

DAILY 2014-12-13 18:46:02
 Re = 215.36 (200.57, -78.35, -3.84 GSE)



```

RAD2
Antenna Ey .....
Mode LIN(1) .....
SUM/SEP SEP .....
Toggle OFF .....

RAD1
Antenna .....
Mode .....
SUM/SEP .....
Toggle .....

TNR
Antenna ExEy .....
Mode A-32 .....
Sweep ACE .....
  
```