

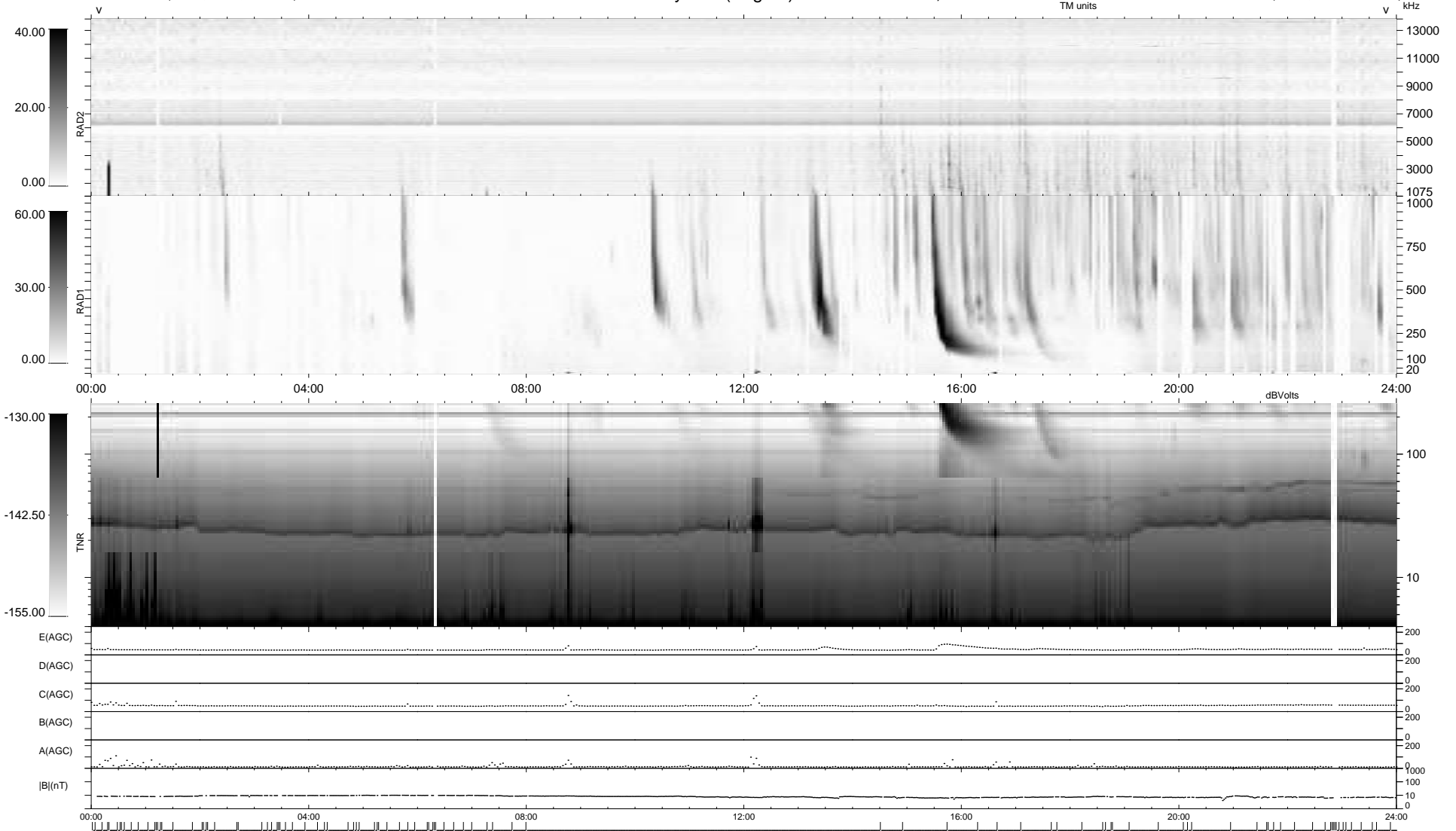
0 bad + 837 good MF/939MF projected (89%) - 102 missing MFs  
 Avg interval = 180 secs  
 Re = -227.13 (207.18, -93.07, 1.79 GSE)

windlib 2.0b

LZ version = v02

### WIND/WAVES Summary Plot (Page 1) for 04-DEC-2014, DOY = 338

DAILY 2014-12-08 13:46:54  
 Re = 225.77 (206.19, -91.95, 1.16 GSE)



RAD2 Antenna Ey .....  
 Mode LIN(1) .....  
 SUM/SEP SEP .....  
 Toggle OFF .....  
 RAD1 Antenna .....  
 Mode .....  
 SUM/SEP .....  
 Toggle .....  
 TNR Antenna ExEy .....  
 Mode A-32 .....  
 Sweep ACE .....