

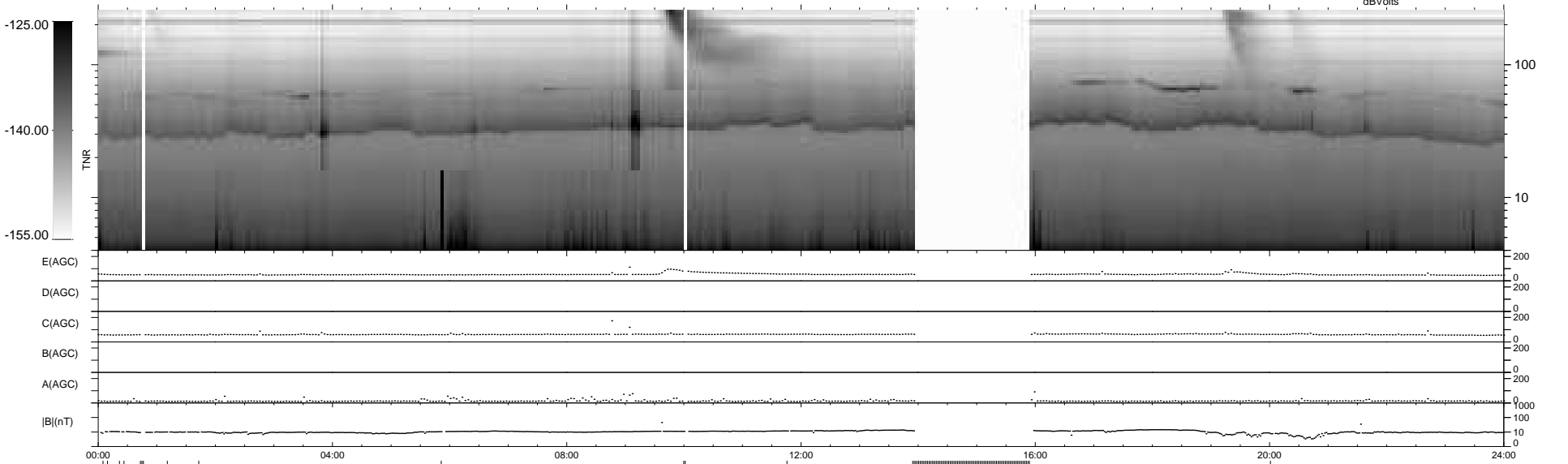
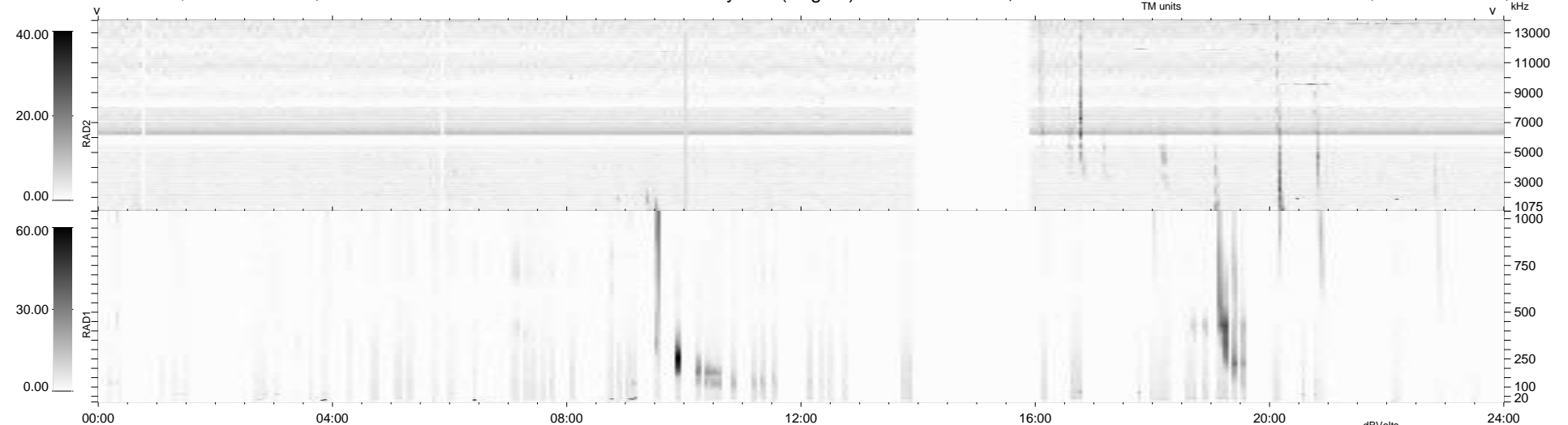
3 bad + 843 good MF/939MF projected (89%) - 93 missing MFs
 Avg interval = 180 secs
 Re = -231.41 (210.58, -95.87, 3.70 GSE)

windlib 2.0b

LZ version = v03

WIND/WAVES Summary Plot (Page 1) for 01-DEC-2014, DOY = 335

DAILY 2014-12-09 14:46:02
 Re = 230.01 (209.43, -95.05, 3.07 GSE)



RAD2 Antenna Ey
 Mode LIN(1)
 SUM/SEP SEP
 Toggle OFF
 RAD1 Antenna
 Mode
 SUM/SEP
 Toggle
 TNR Antenna ExEy
 Mode A-32
 Sweep ACE