

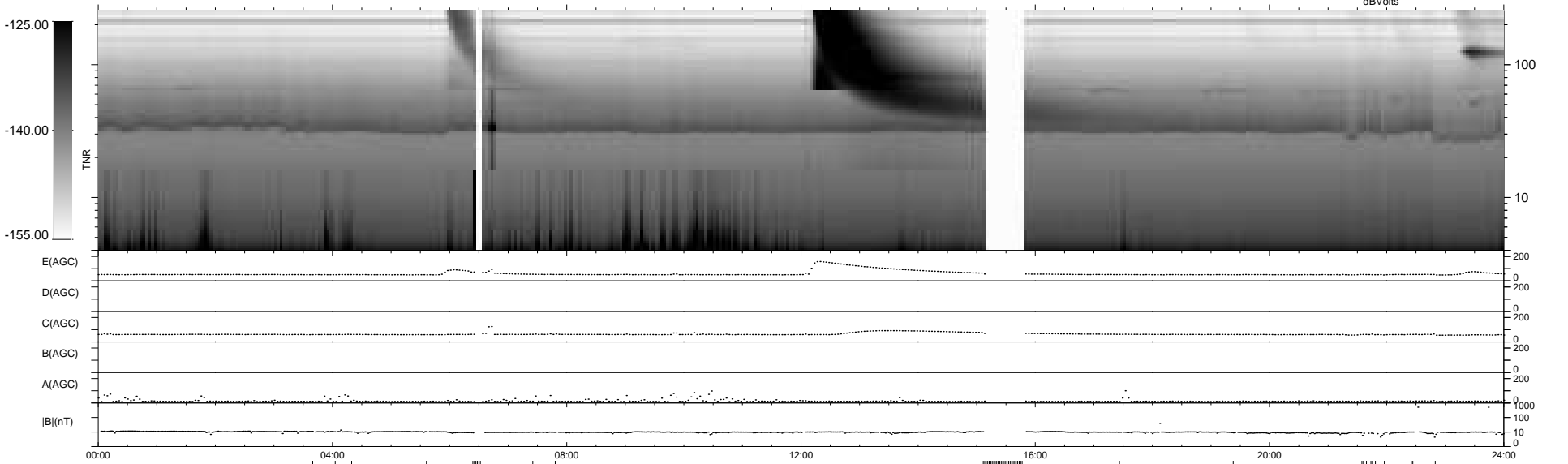
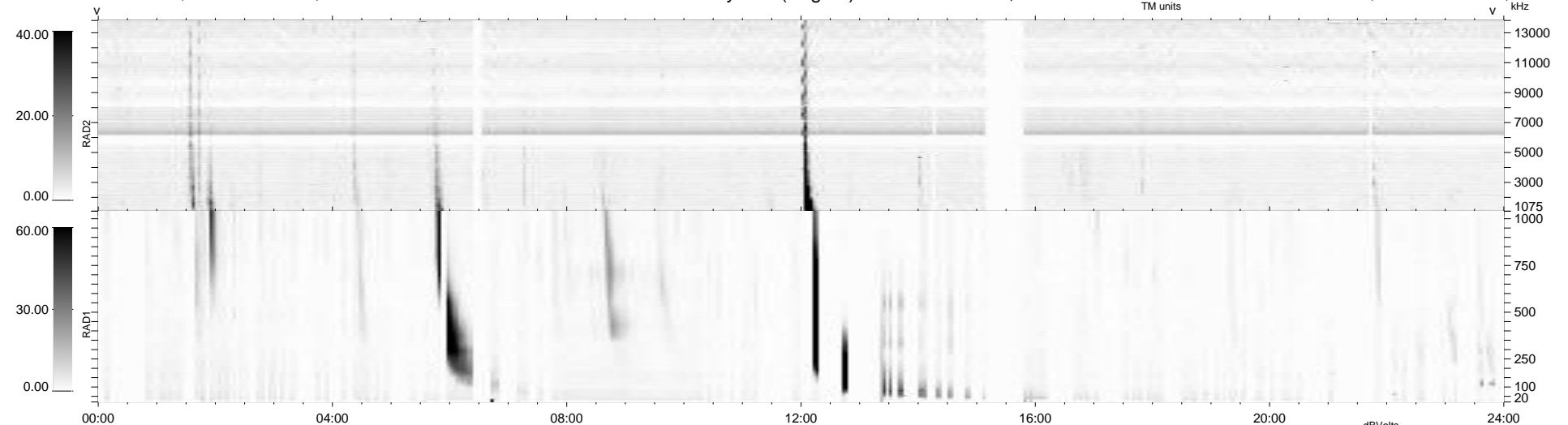
5 bad + 883 good MF/939MF projected (94%) - 51 missing MFs
 Avg interval = 180 secs
 Re = -232.82 (211.79, -96.61, 4.33 GSE)

windlib 2.0b

LZ version = v04

WIND/WAVES Summary Plot (Page 1) for 30-NOV-2014, DOY = 334

DAILY 2014-12-09 12:46:03
 Re = 231.42 (210.59, -95.87, 3.70 GSE)



RAD2 Antenna Ey
 Mode LIN(1)
 SUM/SEP SEP
 Toggle OFF
 RAD1 Antenna
 Mode
 SUM/SEP
 Toggle
 TNR Antenna ExEy
 Mode A-32
 Sweep ACE