

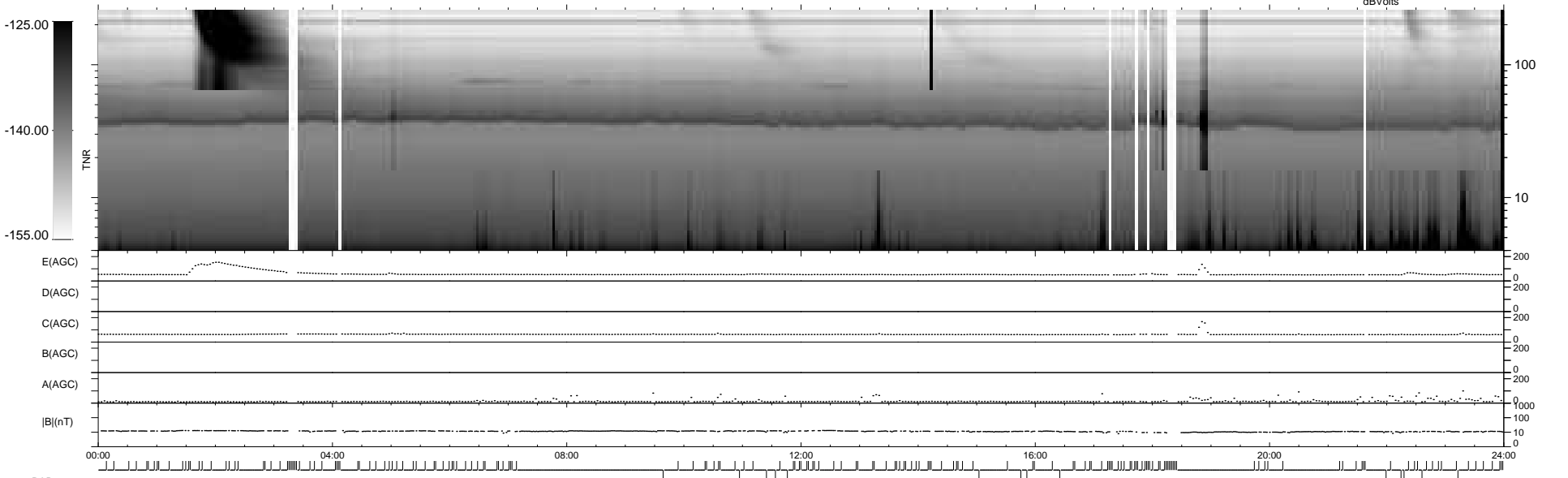
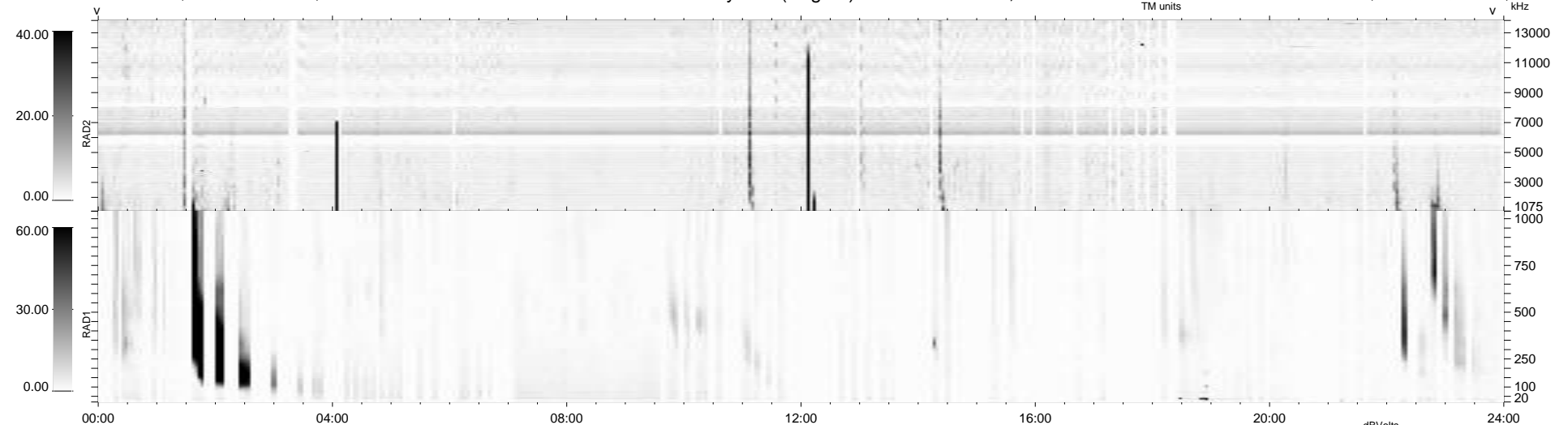
14 bad + 744 good MF/939MF projected (79%) - 181 missing MFs
 Avg interval = 180 secs
 Re = -234.23 (213.02, -97.25, 4.94 GSE)

windlib 2.0b

LZ version = v01

WIND/WAVES Summary Plot (Page 1) for 29-NOV-2014, DOY = 333

DAILY 2014-12-01 15:46:47
 Re = 232.83 (211.79, -96.61, 4.33 GSE)



```

RAD2
Antenna Ey .....
Mode LIN(1) .....
SUM/SEP SEP .....
Toggle OFF .....

RAD1
Antenna .....
Mode .....
SUM/SEP .....
Toggle .....

TNR
Antenna ExEy .....
Mode A-32 .....
Sweep ACE .....
  
```