

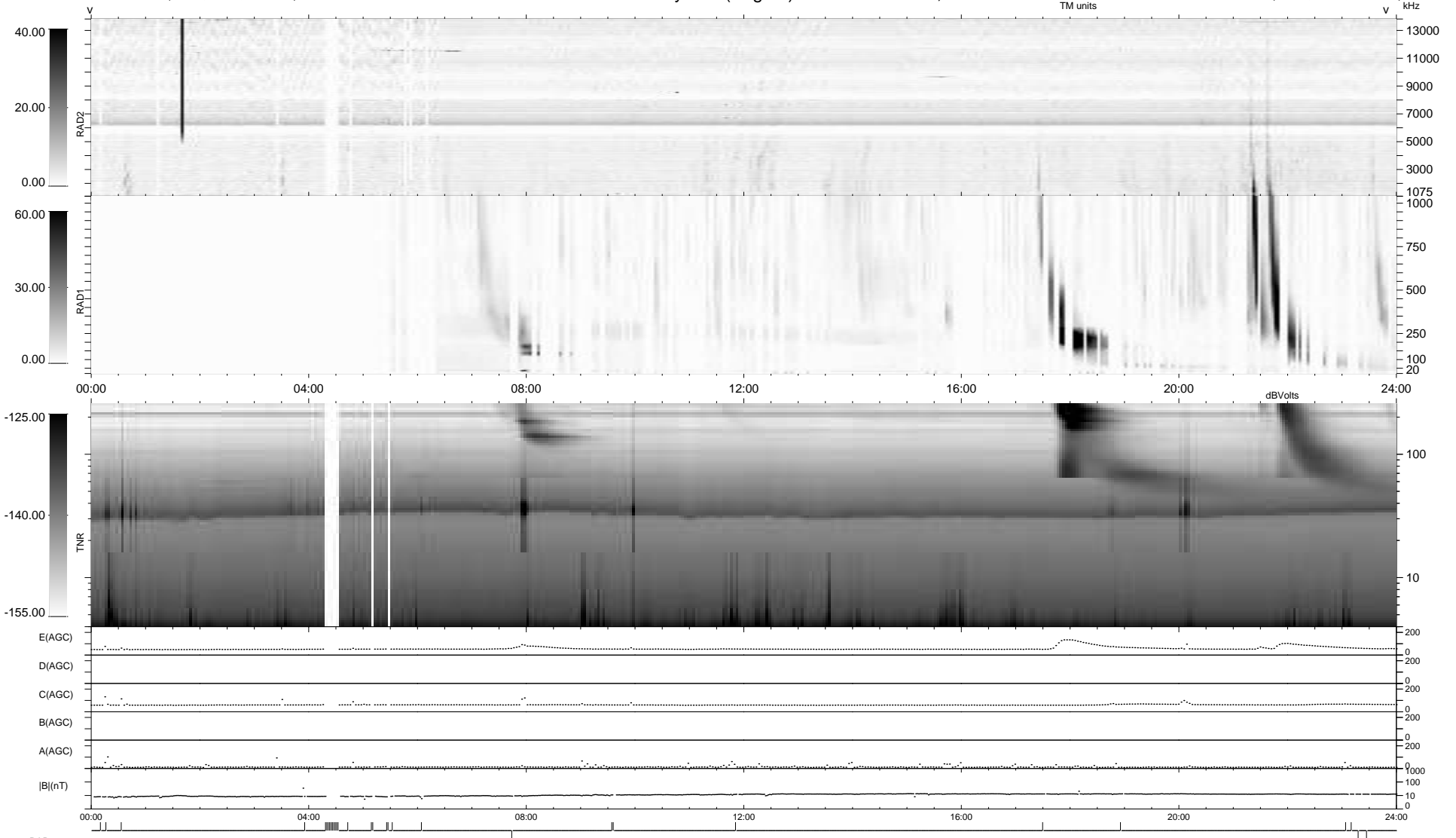
3 bad + 908 good MF/939MF projected (96%) - 28 missing MFs
 Avg interval = 180 secs
 Re = 235.62 (214.29, -97.81, 5.55 GSE)

windlib 2.0b

LZ version = v03

WIND/WAVES Summary Plot (Page 1) for 28-NOV-2014, DOY = 332

DAILY 2014-12-08 13:46:04
 Re = 234.24 (213.03, -97.26, 4.95 GSE)



RAD2 Antenna Ey
 Mode LIN(1)
 SUM/SEP SEP
 Toggle OFF
 RAD1 Antenna
 Mode
 SUM/SEP
 Toggle
 TNR Antenna ExEy
 Mode A-32
 Sweep ACE