

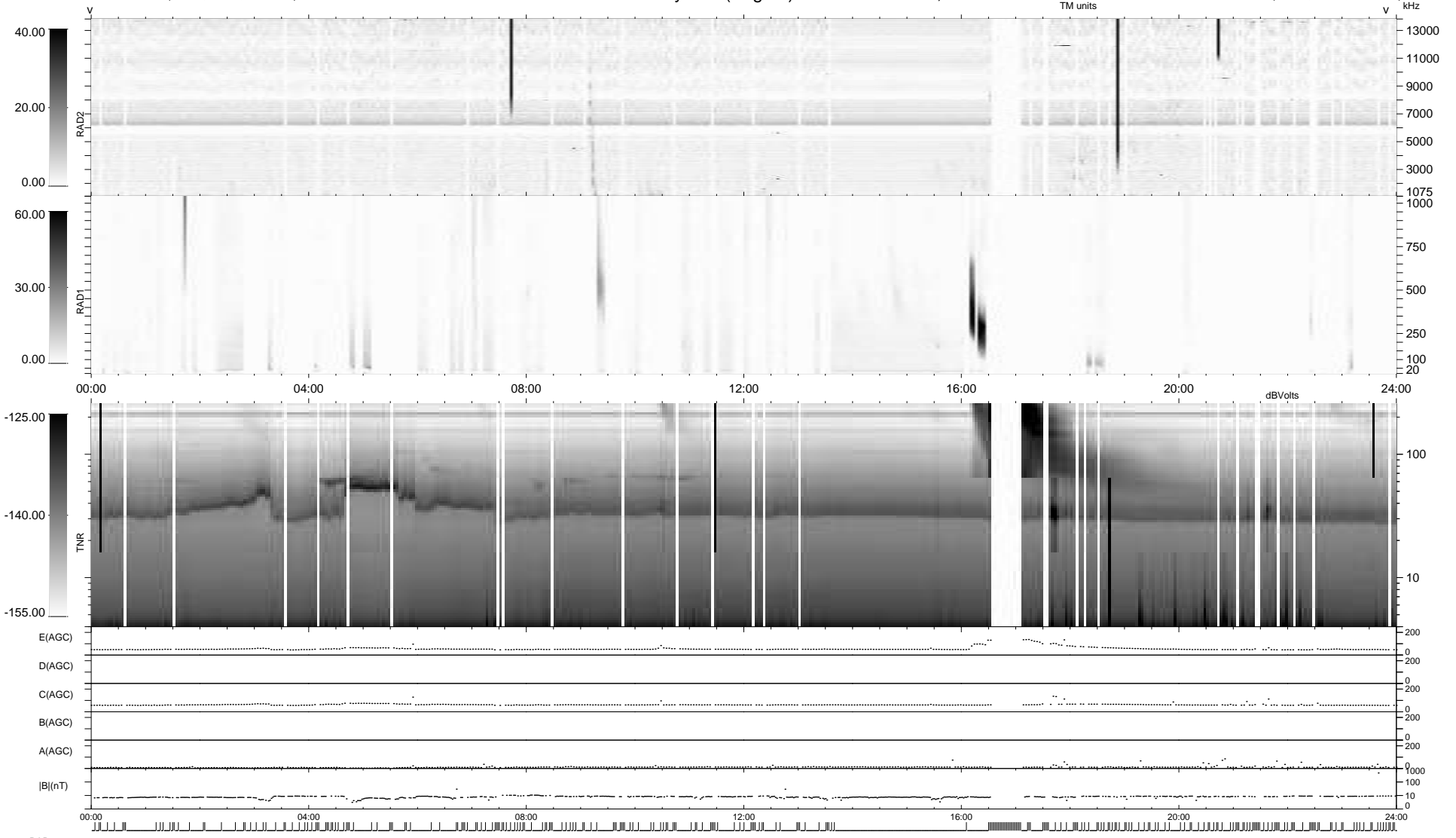
0 bad + 659 good MF/939MF projected (70%) - 280 missing MFs
 Avg interval = 180 secs
 Re = 236.99 (215.56, -98.27, 6.15 GSE)

windlib 2.0b

LZ version = v01

WIND/WAVES Summary Plot (Page 1) for 27-NOV-2014, DOY = 331

DAILY 2014-12-01 09:46:50
 Re = 235.63 (214.30, -97.81, 5.56 GSE)



RAD2
 Antenna Ey
 Mode LIN(1)
 SUM/SEP SEP
 Toggle OFF
 RAD1
 Antenna
 Mode
 SUM/SEP
 Toggle
 TNR
 Antenna ExEy
 Mode A-32
 Sweep ACE