

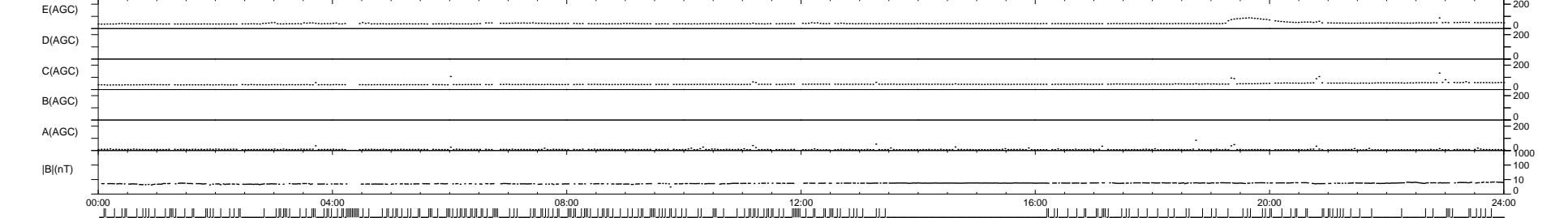
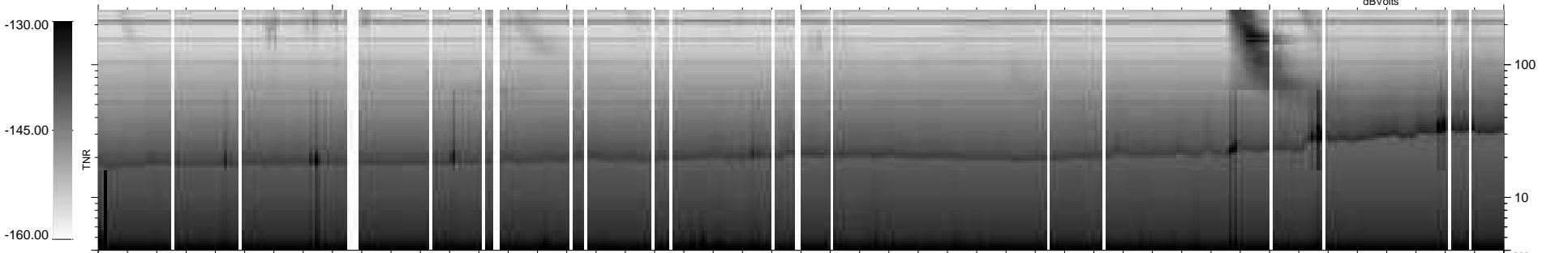
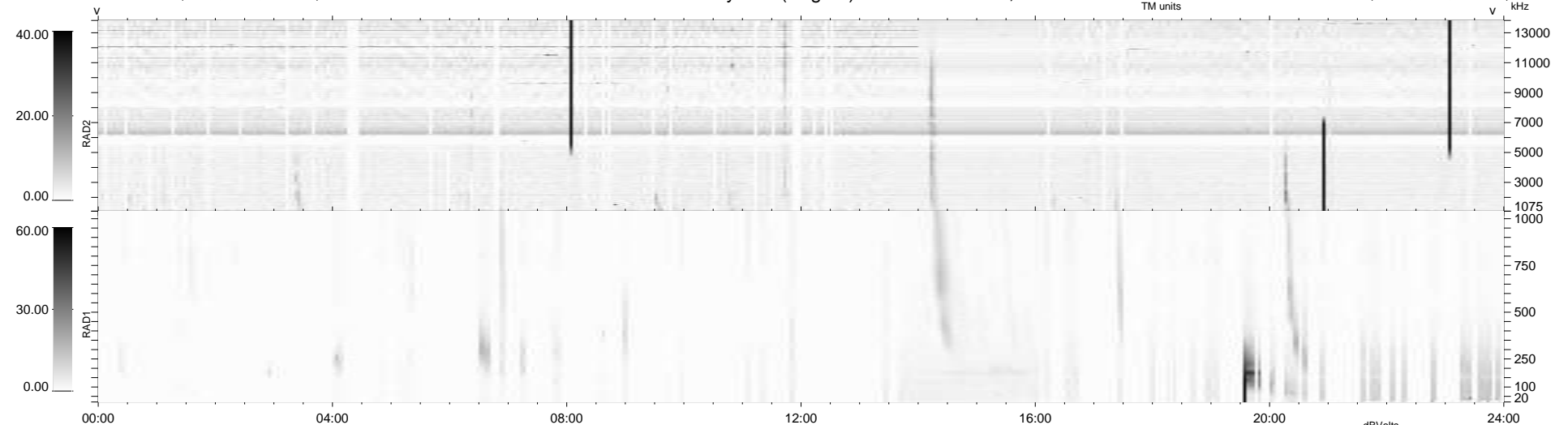
0 bad + 690 good MF/939MF projected (73%) - 249 missing MFs
Avg interval = 180 secs
Re = 238.32 (216.85, -98.64, 6.74 GSE)

windlib 2.0b

LZ version = v01

WIND/WAVES Summary Plot (Page 1) for 26-NOV-2014, DOY = 330

DAILY 2014-12-01 09:46:06
Re = 237.00 (215.57, -98.27, 6.16 GSE)



RAD2
Antenna Ey
Mode LIN(1)
SUM/SEP SEP
Toggle OFF

RAD1
Antenna
Mode
SUM/SEP
Toggle

TNR
Antenna ExEy
Mode A-32
Sweep ACE