

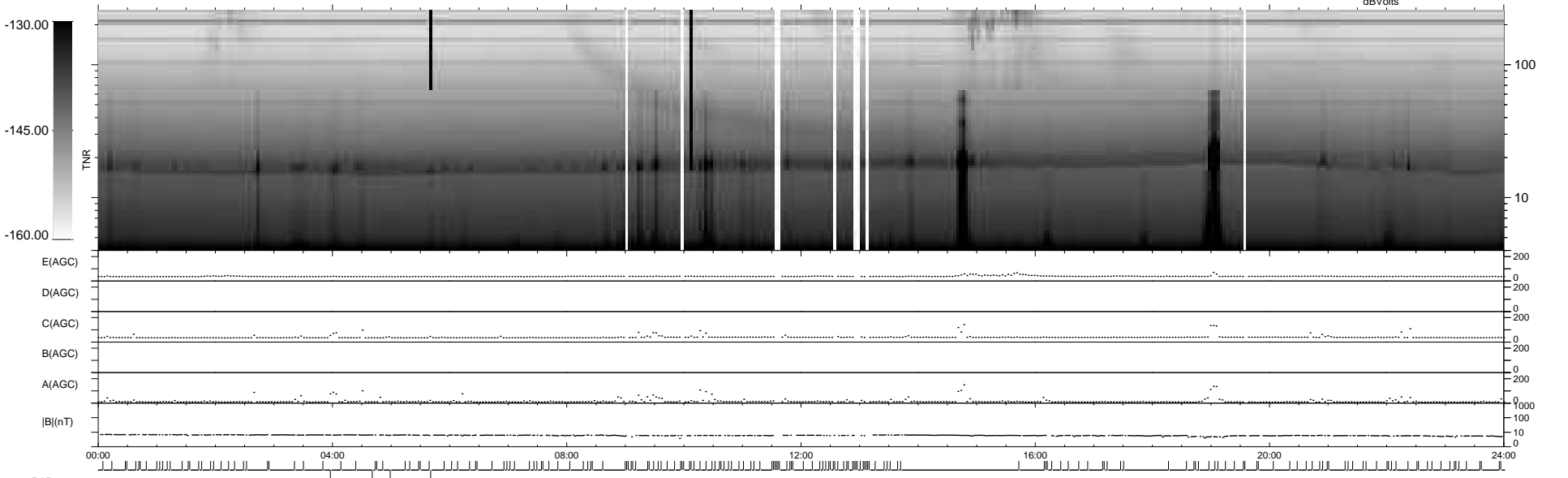
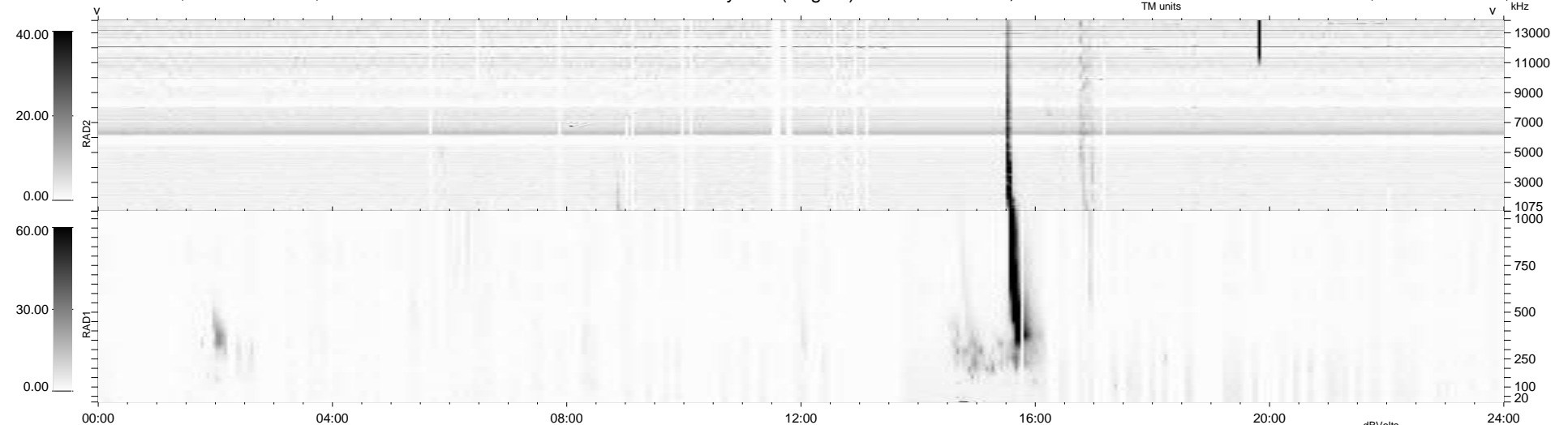
4 bad + 738 good MF/940MF projected (78%) - 198 missing MFs
Avg interval = 180 secs
Re = 240.86 (219.40, -99.07, 7.89 GSE)

windlib 2.0b

LZ version = v01

WIND/WAVES Summary Plot (Page 1) for 24-NOV-2014, DOY = 328

DAILY 2014-11-26 09:46:02
Re = 239.63 (218.14, -98.91, 7.33 GSE)



RAD2
Antenna Ey
Mode LIN(1)
SUM/SEP SEP
Toggle OFF
RAD1
Antenna Ex
Mode LIS(2/4)
SUM/SEP SUM
Toggle OFF
TNR
Antenna ExEy
Mode A-32
Sweep ACE