

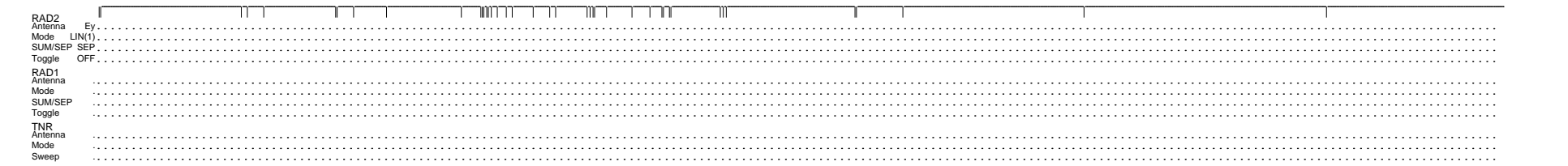
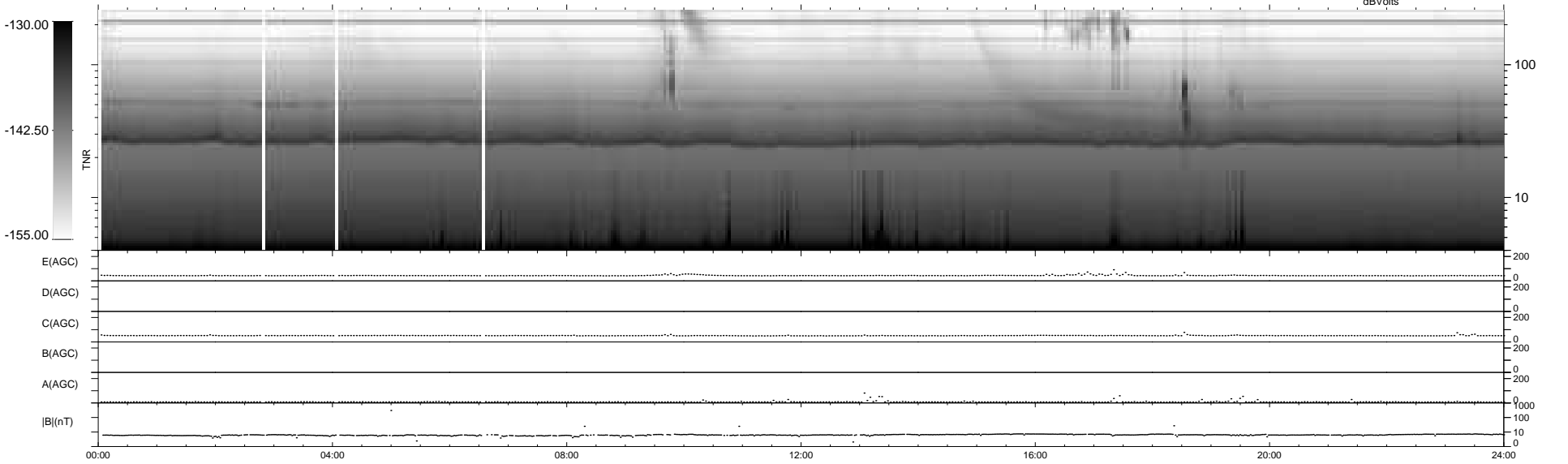
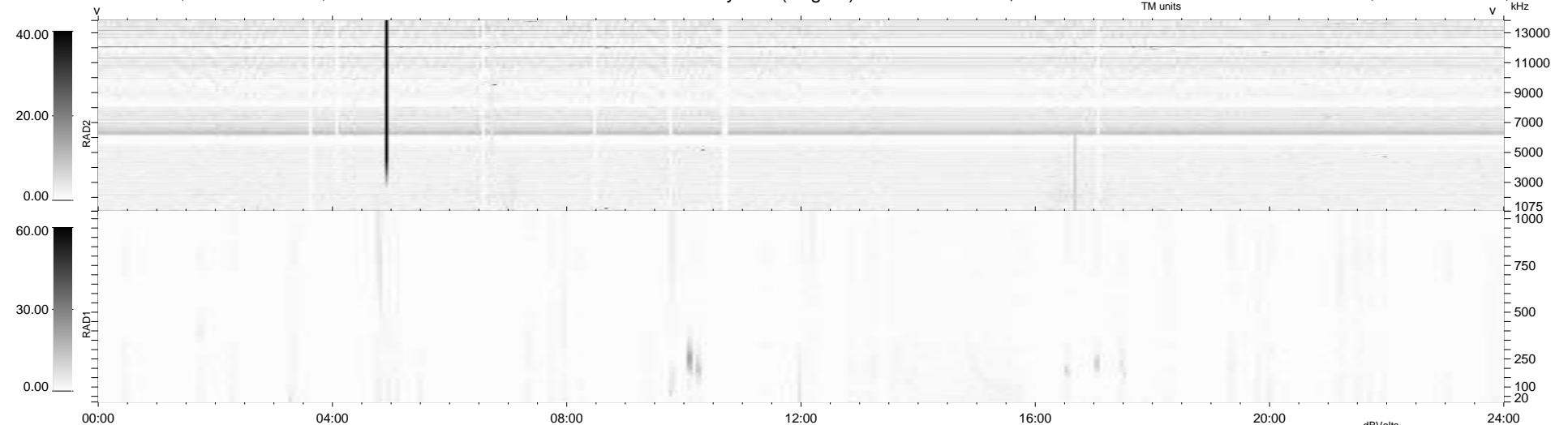
41 bad + 898 good MF/939MF projected (95%) - 0 missing MFs  
Avg interval = 180 secs  
Re = 245.22 (224.34, -98.50, 10.03 GSE)

windlib 2.0b

LZ version = v03

### WIND/WAVES Summary Plot (Page 1) for 20-NOV-2014, DOY = 324

DAILY 2014-12-09 16:46:02  
Re = 244.24 (223.14, -98.83, 9.51 GSE)



RAD2  
Antenna Ey  
Mode LIN(1)  
SUM/SEP SEP  
Toggle OFF

RAD1  
Antenna  
Mode  
SUM/SEP  
Toggle

TNR  
Antenna  
Mode  
Sweep