

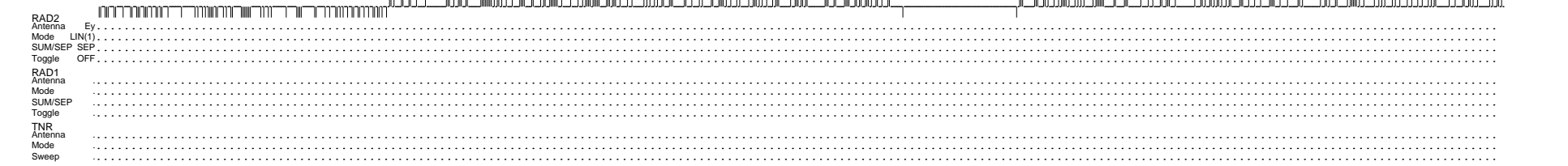
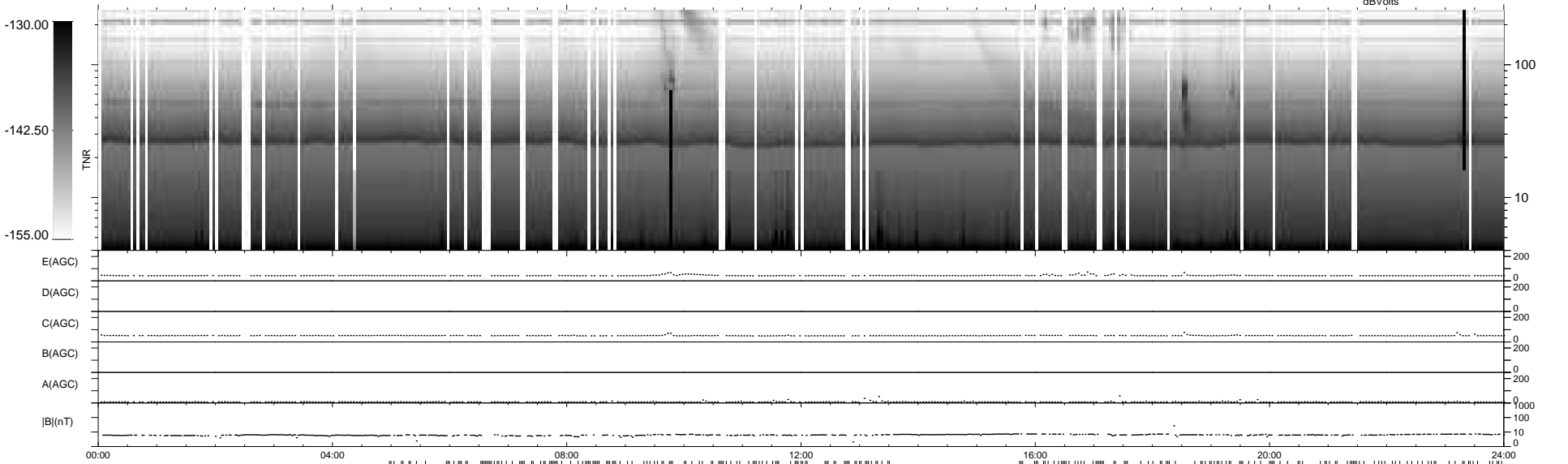
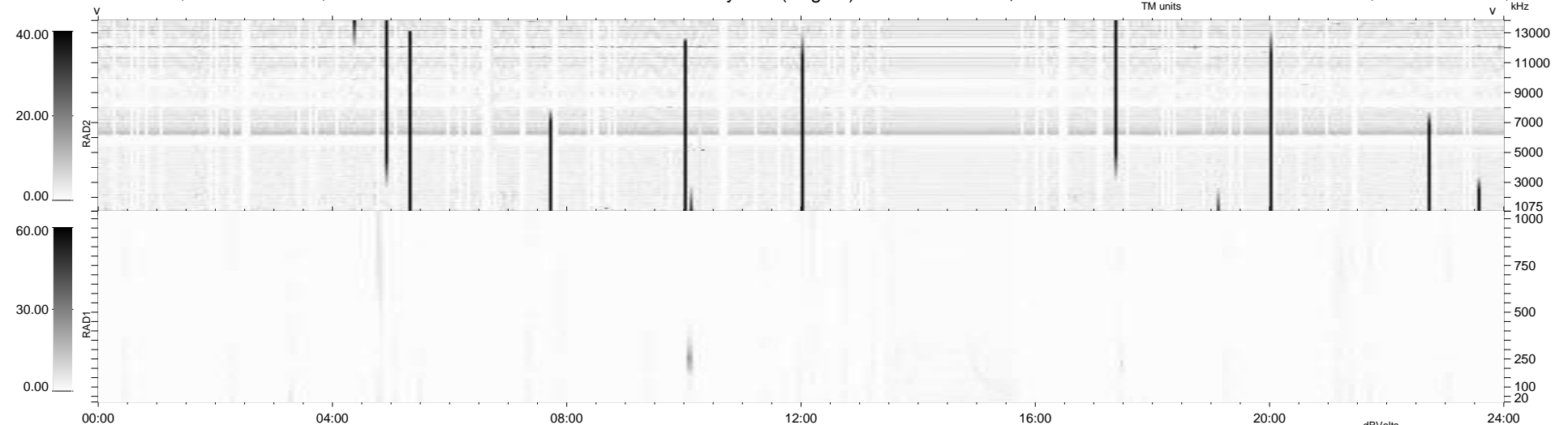
76 bad + 617 good MF/939MF projected (65%) - 246 missing MFs
Avg interval = 180 secs
Re = 245.22 (224.34, -98.50, 10.03 GSE)

windlib 2.0b

LZ version = v01

WIND/WAVES Summary Plot (Page 1) for 20-NOV-2014, DOY = 324

DAILY 2014-11-25 08:46:54
Re = 244.24 (223.14, -98.83, 9.51 GSE)



RAD2
Antenna Ey
Mode LIN(1)
SUM/SEP SEP
Toggle OFF

RAD1
Antenna
Mode
SUM/SEP
Toggle

TNR
Antenna
Mode
Sweep