

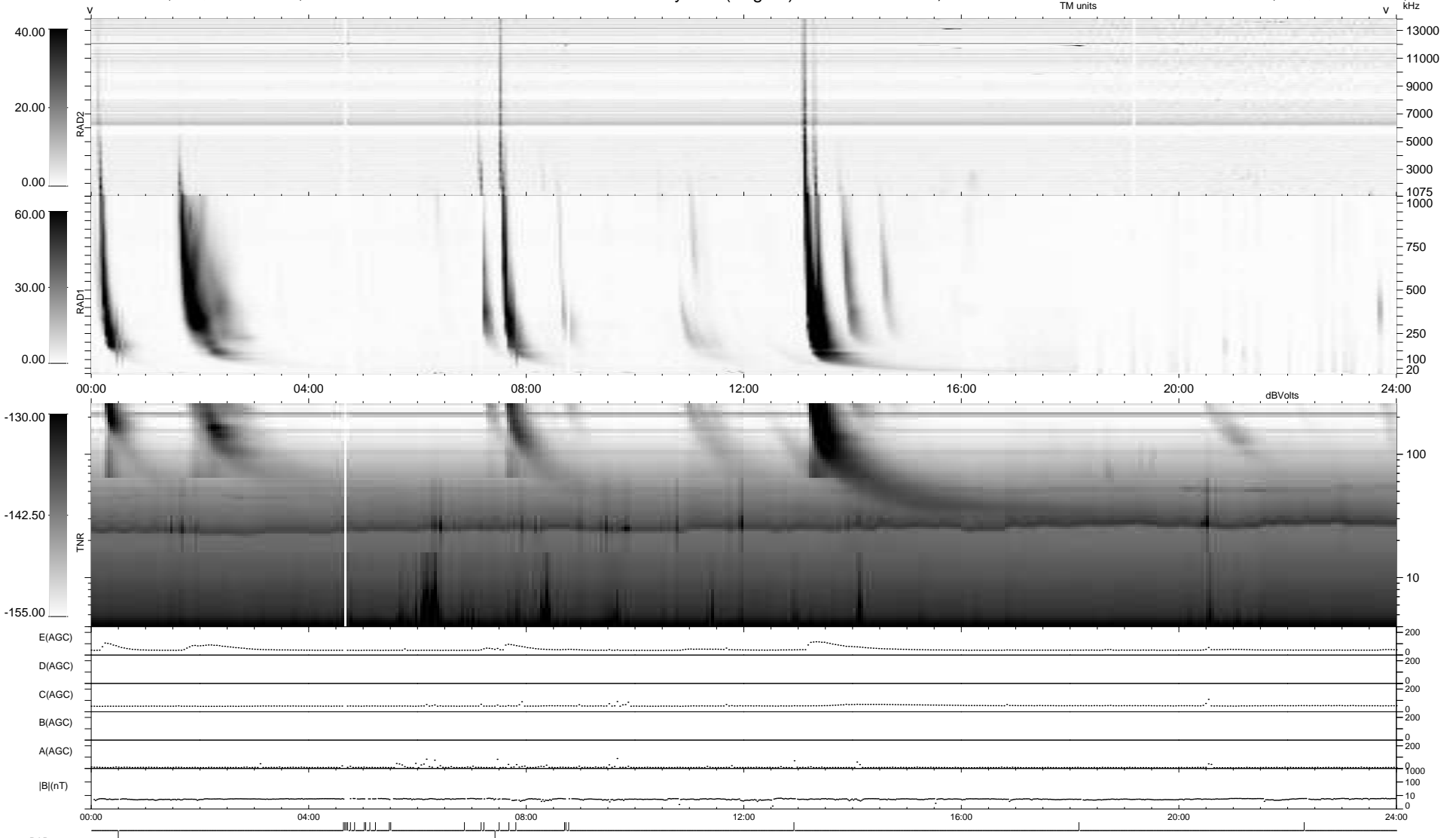
2 bad + 913 good MF/939MF projected (97%) - 24 missing MFs  
 Avg interval = 180 secs  
 Re = 246.14 (225.54, -98.02, 10.53 GSE)

windlib 2.0b

LZ version = v02

### WIND/WAVES Summary Plot (Page 1) for 19-NOV-2014, DOY = 323

DAILY 2014-12-09 10:46:05  
 Re = 245.23 (224.35, -98.50, 10.03 GSE)



RAD2  
 Antenna Ey .....  
 Mode LIN(1) .....  
 SUM/SEP SEP .....  
 Toggle OFF .....  
 RAD1  
 Antenna Ex .....  
 Mode LIS(2,4) .....  
 SUM/SEP SUM .....  
 Toggle OFF .....  
 TNR  
 Antenna ExEy .....  
 Mode A-32 .....  
 Sweep ACE .....