

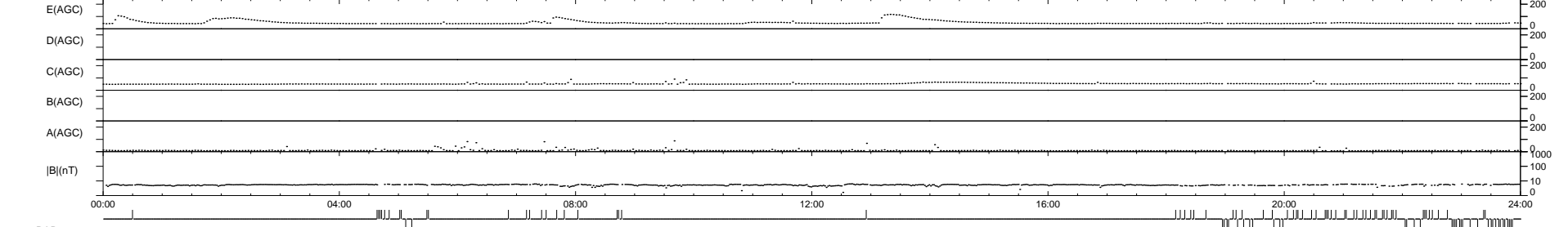
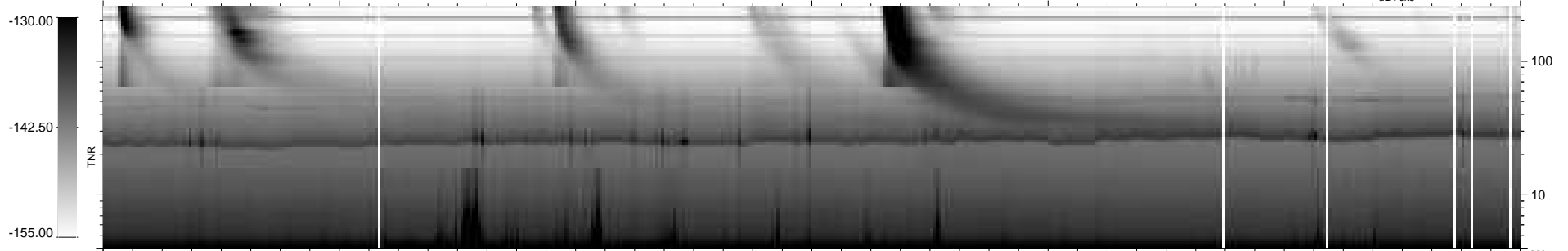
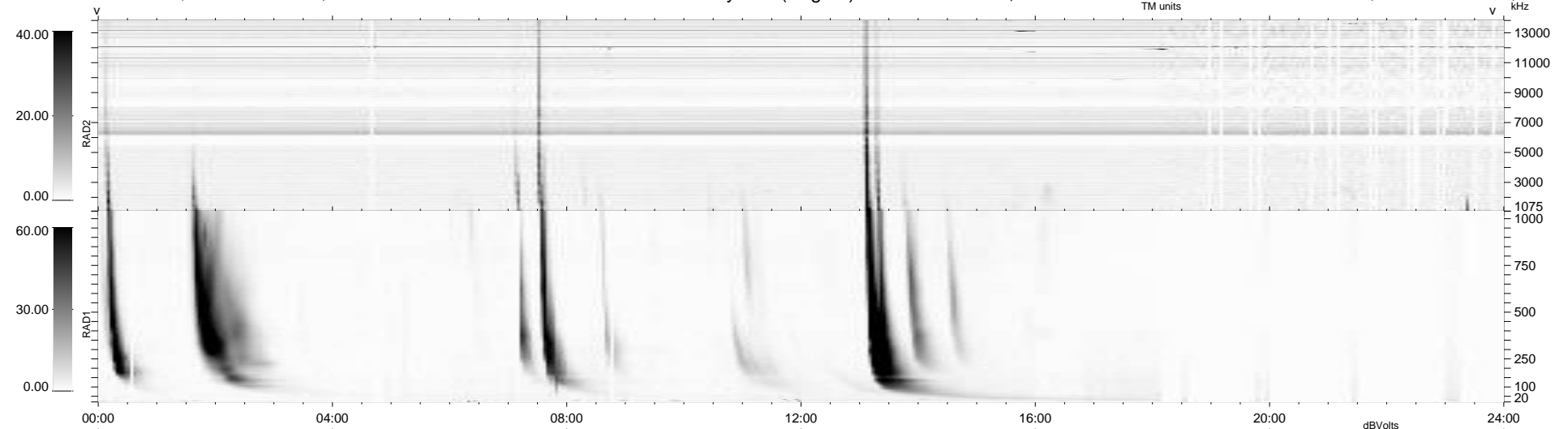
38 bad + 831 good MF/939MF projected (88%) - 70 missing MFs  
 Avg interval = 180 secs  
 Re = 246.14 (225.54, -98.02, 10.53 GSE)

windlib 2.0b

LZ version = v01

### WIND/WAVES Summary Plot (Page 1) for 19-NOV-2014, DOY = 323

DAILY 2014-11-25 08:46:05  
 Re = 245.23 (224.35, -98.50, 10.03 GSE)



RAD2 Antenna Ey .....  
 Mode LIN(1) .....  
 SUM/SEP SEP .....  
 Toggle OFF .....  
 RAD1 Antenna Ex .....  
 Mode LIS(2/4) .....  
 SUM/SEP SUM .....  
 Toggle OFF .....  
 TNR Antenna ExEy .....  
 Mode A-32 .....  
 Sweep ACE .....