

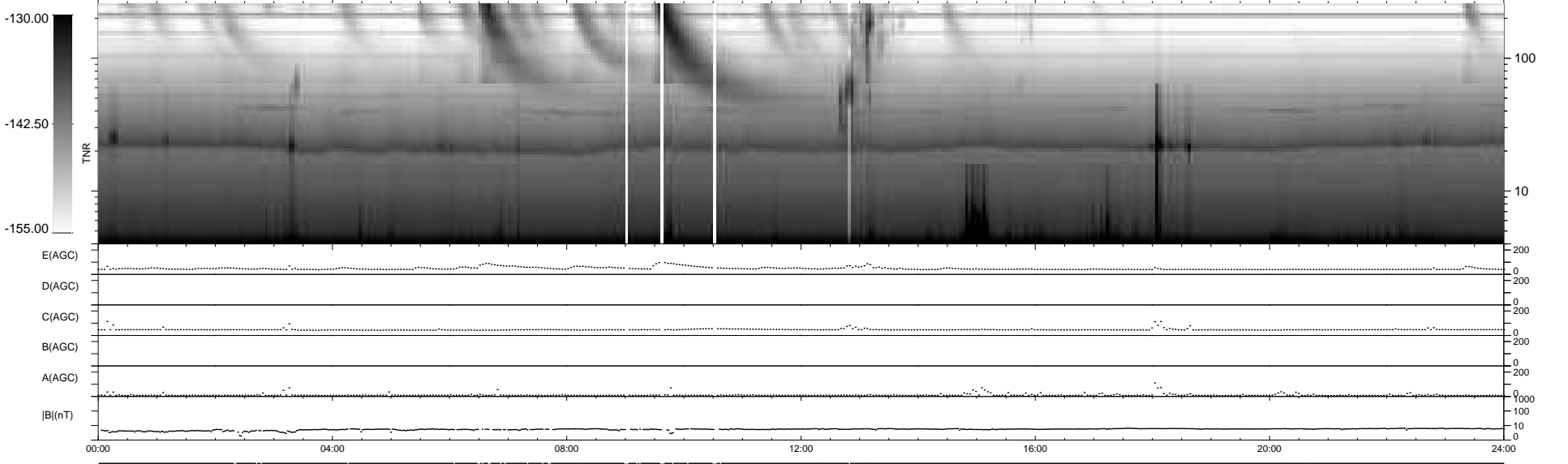
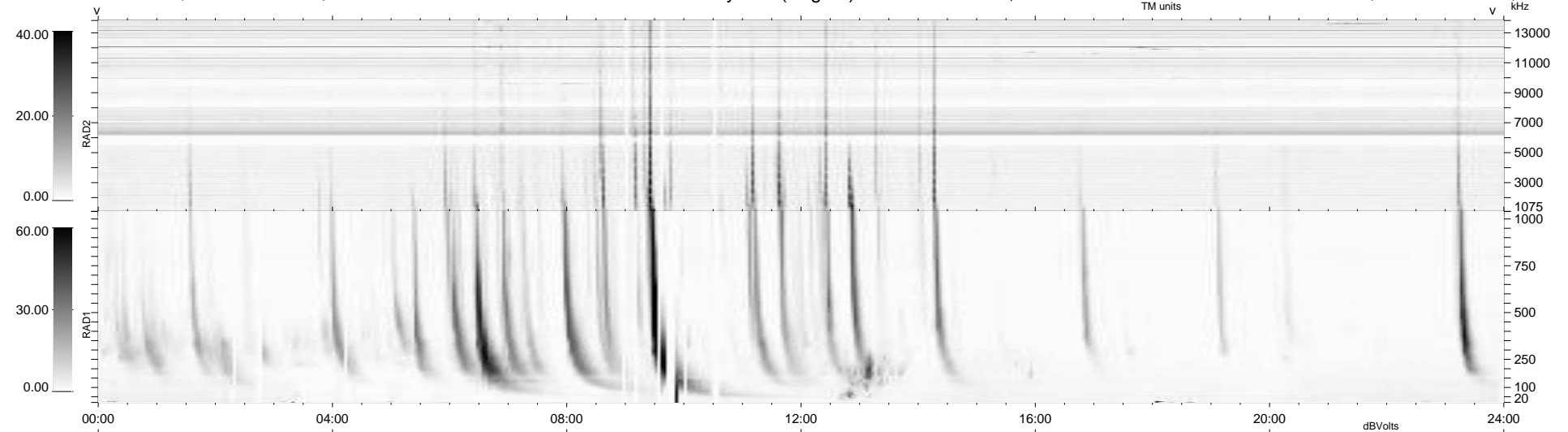
32 bad + 907 good MF/939MF projected (96%) - 0 missing MFs
 Avg interval = 180 secs
 Re = -247.00 (226.71, -97.41, 11.03 GSE)

windlib 2.0b

LZ version = v01

WIND/WAVES Summary Plot (Page 1) for 18-NOV-2014, DOY = 322

DAILY 2014-11-20 09:46:05
 Re = 246.15 (225.54, -98.02, 10.54 GSE)



RAD2
 Antenna Ey
 Mode LIN(1)
 SUM/SEP SEP
 Toggle OFF

RAD1
 Antenna Ex
 Mode LIS(2,4)
 SUM/SEP SUM
 Toggle OFF

TNR
 Antenna ExEy
 Mode A-32
 Sweep ACE