

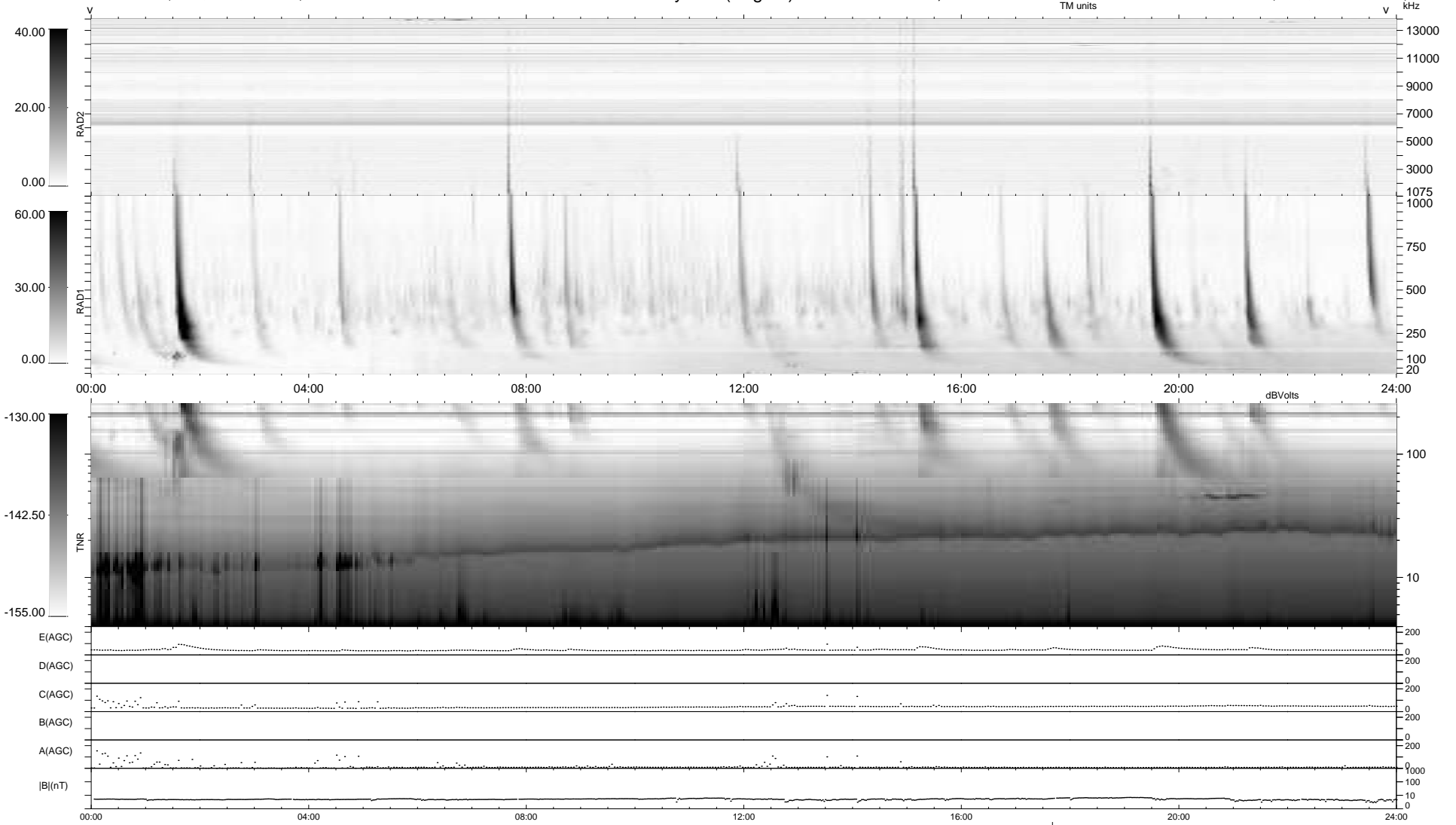
4 bad + 934 good MF/939MF projected (99%) - 1 missing MF  
 Avg interval = 180 secs  
 Re = 247.80 (227.88, -96.65, 11.51 GSE)

windlib 2.0b

LZ version = v01

### WIND/WAVES Summary Plot (Page 1) for 17-NOV-2014, DOY = 321

DAILY 2014-11-19 10:46:04  
 Re = 247.01 (226.72, -97.40, 11.03 GSE)



```

RAD2
Antenna Ey .....
Mode LIN(1) .....
SUM/SEP SEP .....
Toggle OFF .....

RAD1
Antenna Ex .....
Mode LIS(2,4) .....
SUM/SEP SUM .....
Toggle OFF .....

TNR
Antenna ExEy .....
Mode A-32 .....
Sweep ACE .....
  
```