

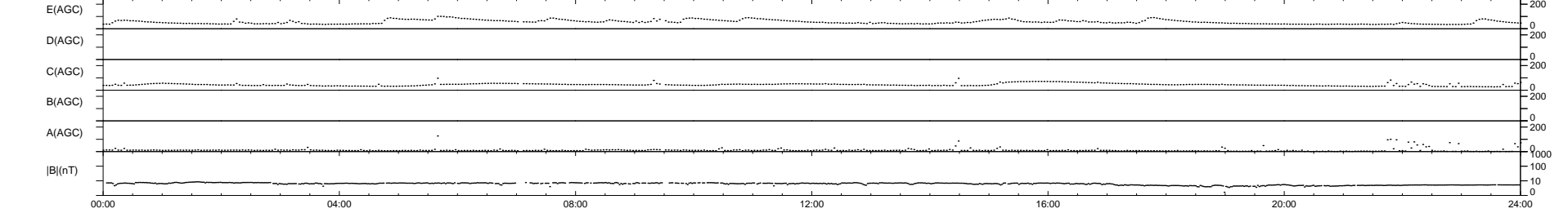
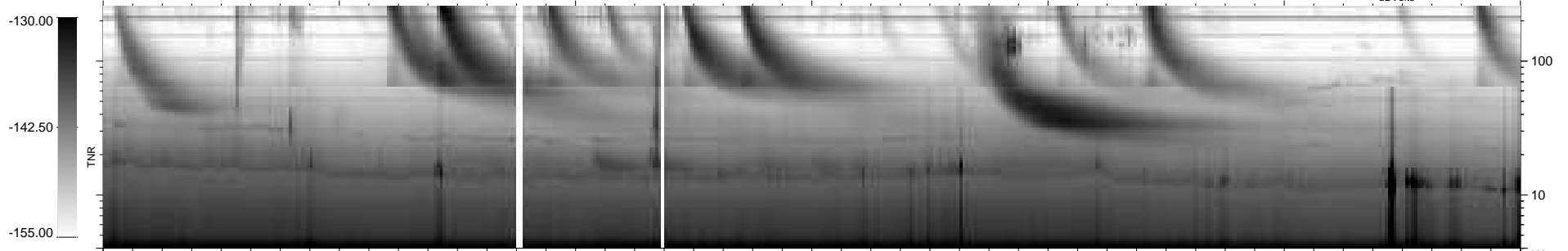
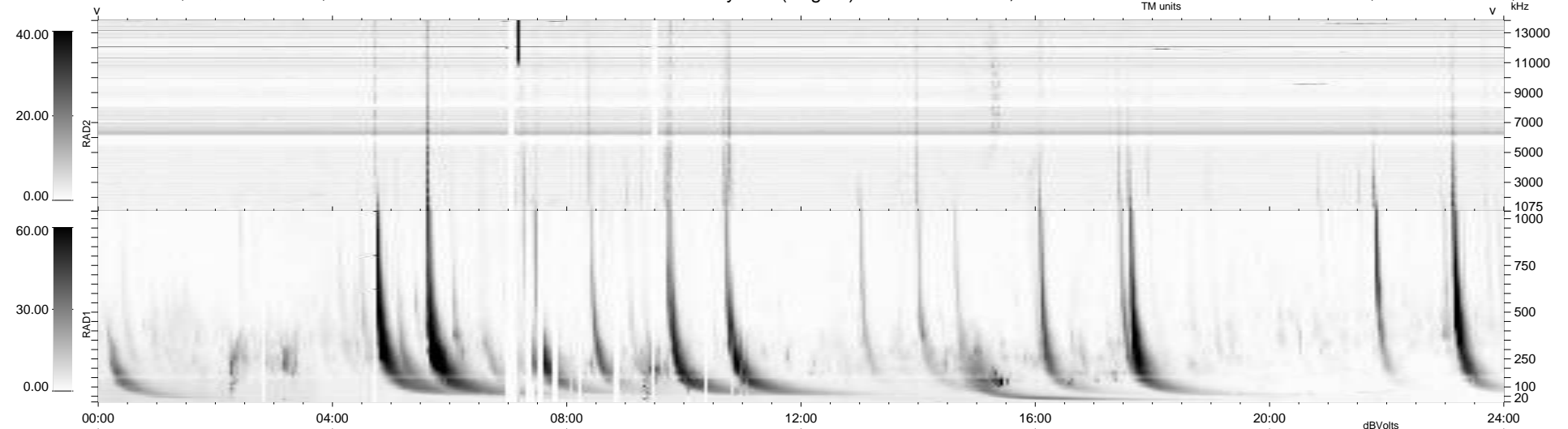
43 bad + 896 good MF/939MF projected (95%) - 0 missing MFs
 Avg interval = 180 secs
 Re = 248.53 (229.04, -95.75, 11.98 GSE)

windlib 2.0b

LZ version = v01

WIND/WAVES Summary Plot (Page 1) for 16-NOV-2014, DOY = 320

DAILY 2014-11-18 12:47:00
 Re = 247.80 (227.89, -96.64, 11.51 GSE)



```

RAD2
Antenna Ey .....
Mode LIN(1) .....
SUM/SEP SEP .....
Toggle OFF .....

RAD1
Antenna Ex .....
Mode LIS(2,4) .....
SUM/SEP SUM .....
Toggle OFF .....

TNR
Antenna ExEy .....
Mode A-32 .....
Sweep ACE .....
  
```