

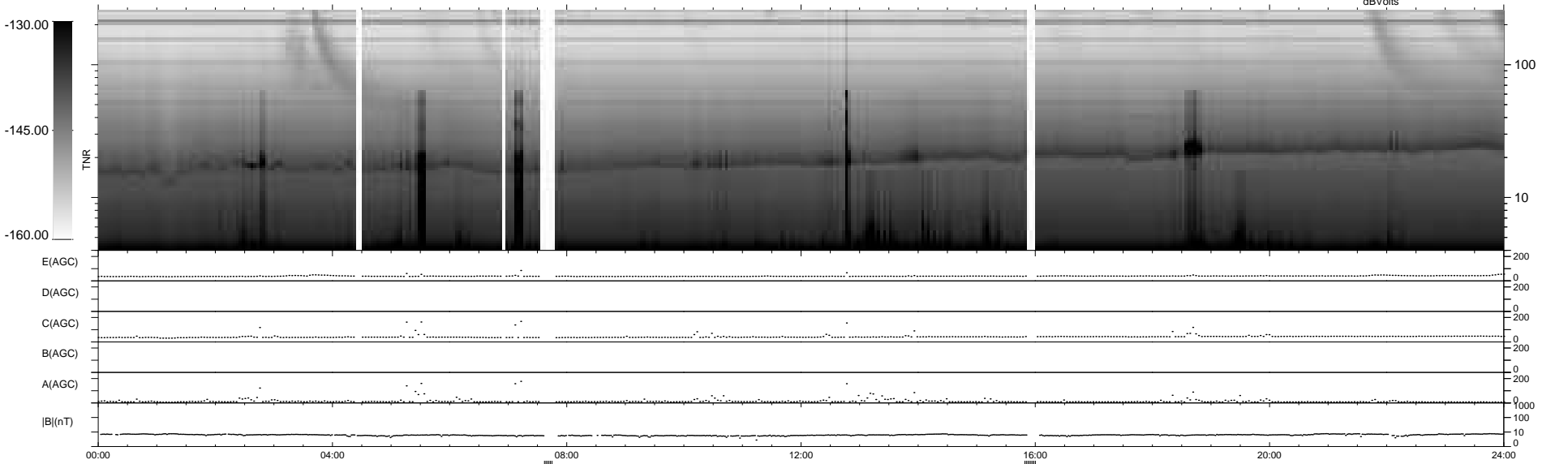
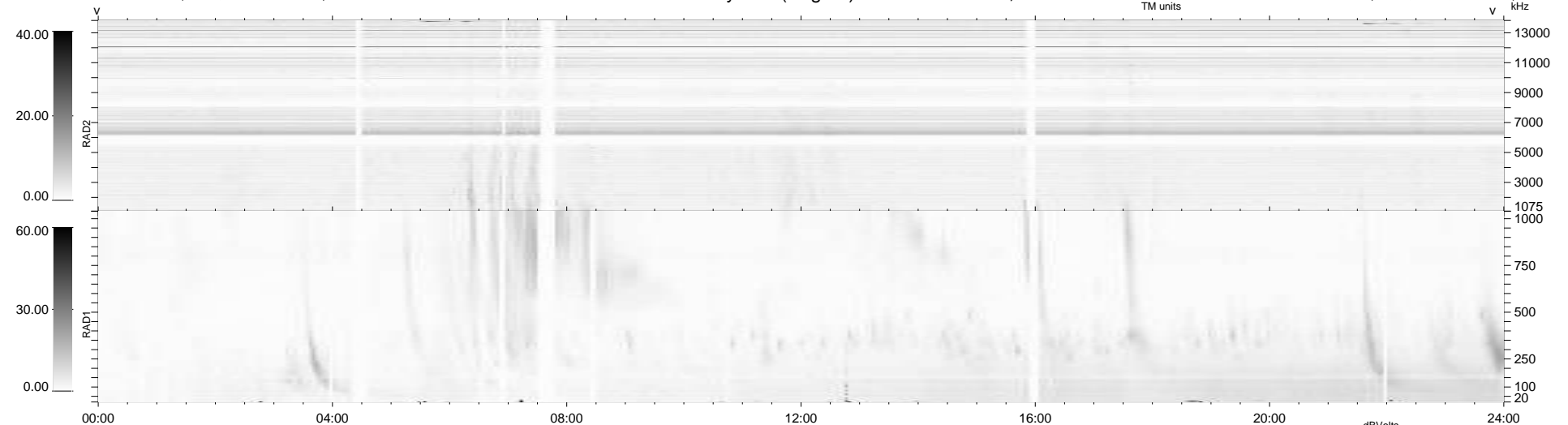
42 bad + 883 good MF/939MF projected (94%) - 14 missing MFs
 Avg interval = 180 secs
 Re = -250.45 (232.49, -92.17, 13.33 GSE)

windlib 2.0b

LZ version = v01

WIND/WAVES Summary Plot (Page 1) for 13-NOV-2014, DOY = 317

DAILY 2014-11-17 09:46:04
 Re = 249.86 (231.35, -93.49, 12.90 GSE)



```

RAD2
Antenna  Ey
Mode     LIN(1)
SUM/SEP  SEP
Toggle   OFF

RAD1
Antenna  Ex
Mode     LIS(2,4)
SUM/SEP  SUM
Toggle   OFF

TNR
Antenna  ExEy
Mode     A-32
Sweep    ACE
  
```