

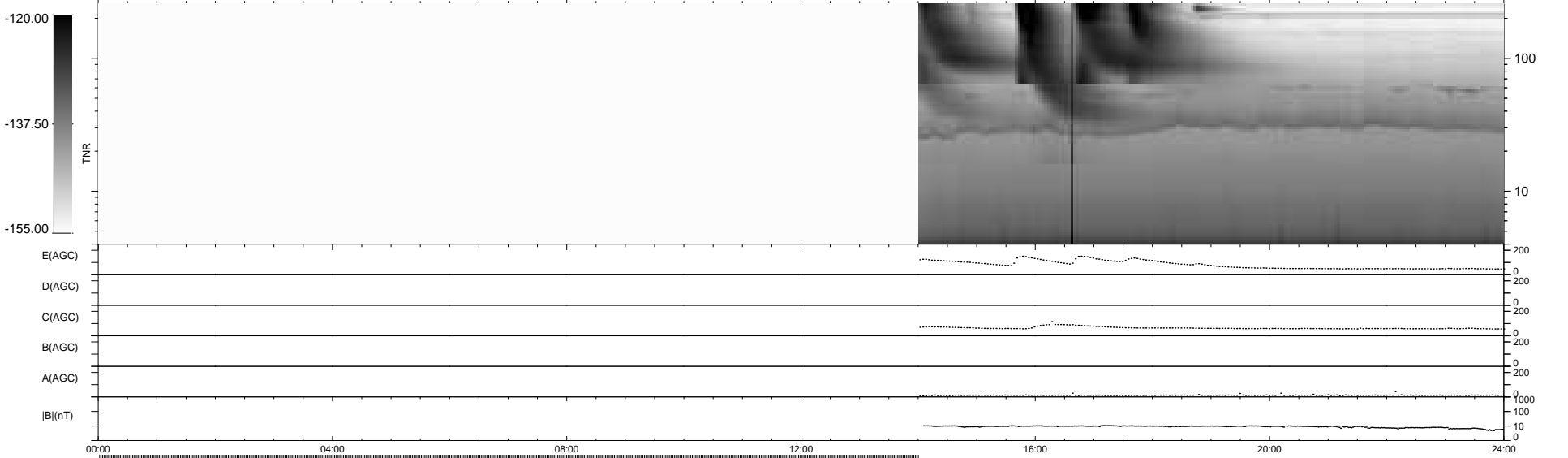
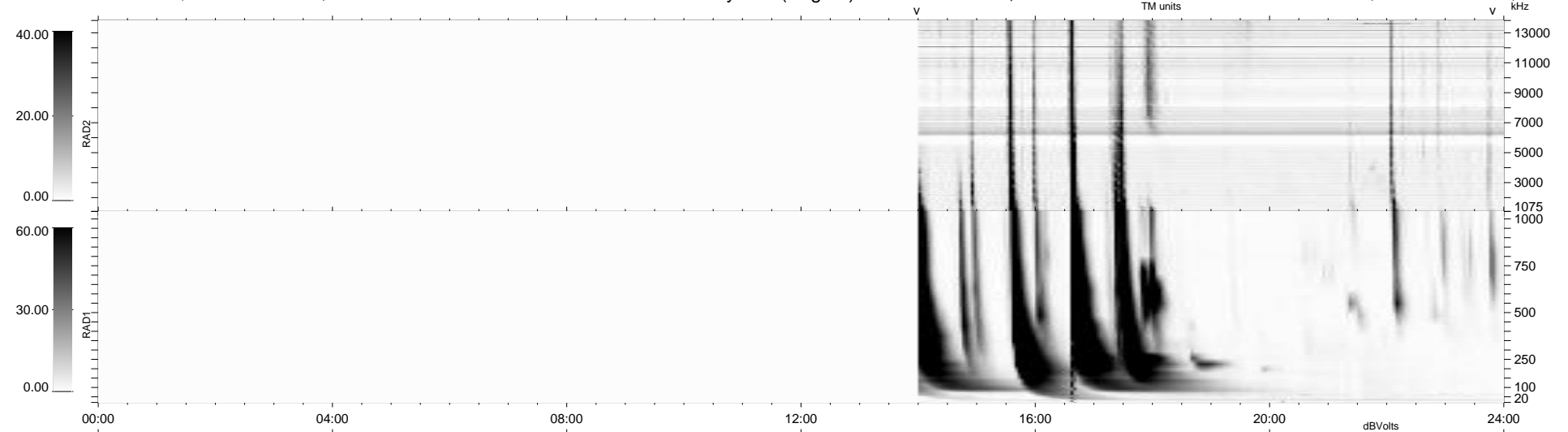
1 bad + 390 good MF/939MF projected (41%) - 548 missing MFs  
Avg interval = 180 secs  
Re = -253.24 (238.89, -82.61, 15.51 GSE)

windlib 2.0b

LZ version = v01

### WIND/WAVES Summary Plot (Page 1) for 07-NOV-2014, DOY = 311

DAILY 2014-11-10 11:46:25  
Re = 253.04 (238.39, -83.46, 15.36 GSE)



RAD2 Antenna Mode SUM/SEP Toggle  
RAD1 Antenna Mode SUM/SEP Toggle  
TNR Antenna Mode Sweep