

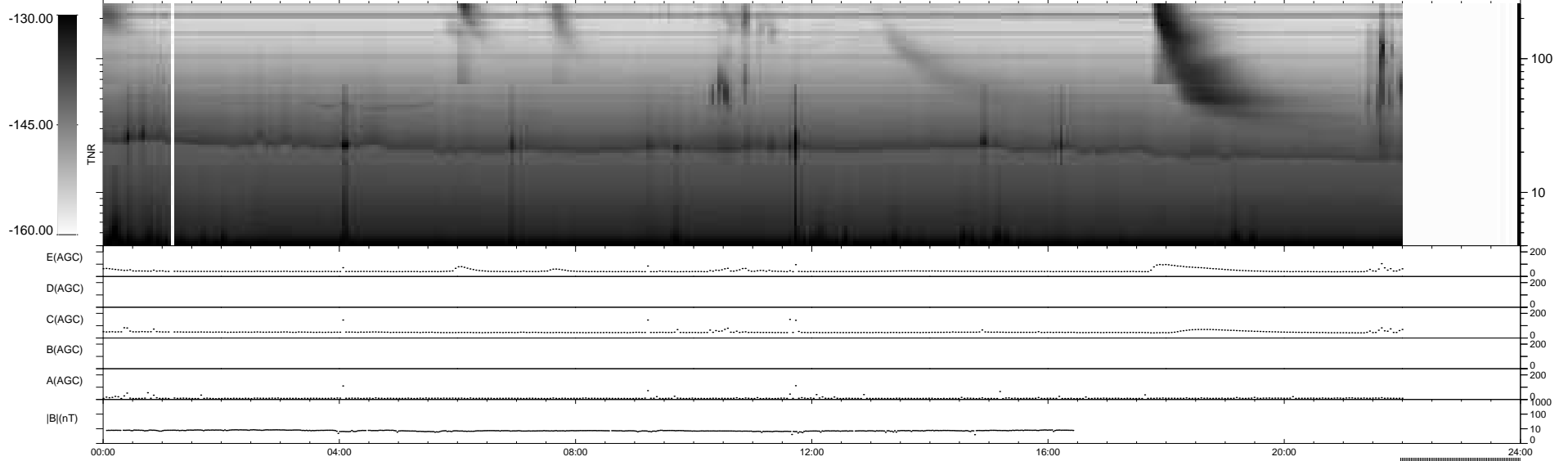
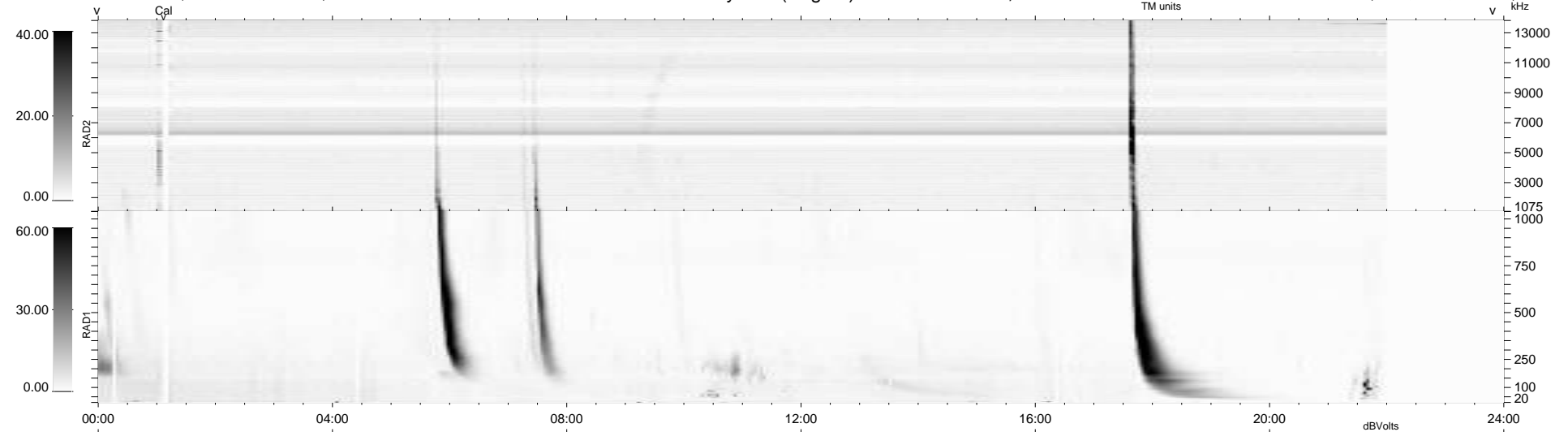
9 bad + 850 good MF/939MF projected (90%) - 80 missing MFs  
 Avg interval = 180 secs  
 Re = -259.06 (252.76, -53.65, 18.59 GSE)

windlib 2.0b

LZ version = v02

### WIND/WAVES Summary Plot (Page 1) for 27-OCT-2014, DOY = 300

DAILY 2014-11-05 16:09:34  
 Re = 258.63 (251.74, -56.39, 18.43 GSE)



```

RAD2
Antenna Ey .....
Mode LIN(1) .....
SUM/SEP SEP .....
Toggle OFF .....

RAD1
Antenna Ex .....
Mode LIS(2,4) .....
SUM/SEP SUM .....
Toggle OFF .....

TNR
Antenna ExEy .....
Mode A-32 .....
Sweep ACE .....
  
```