

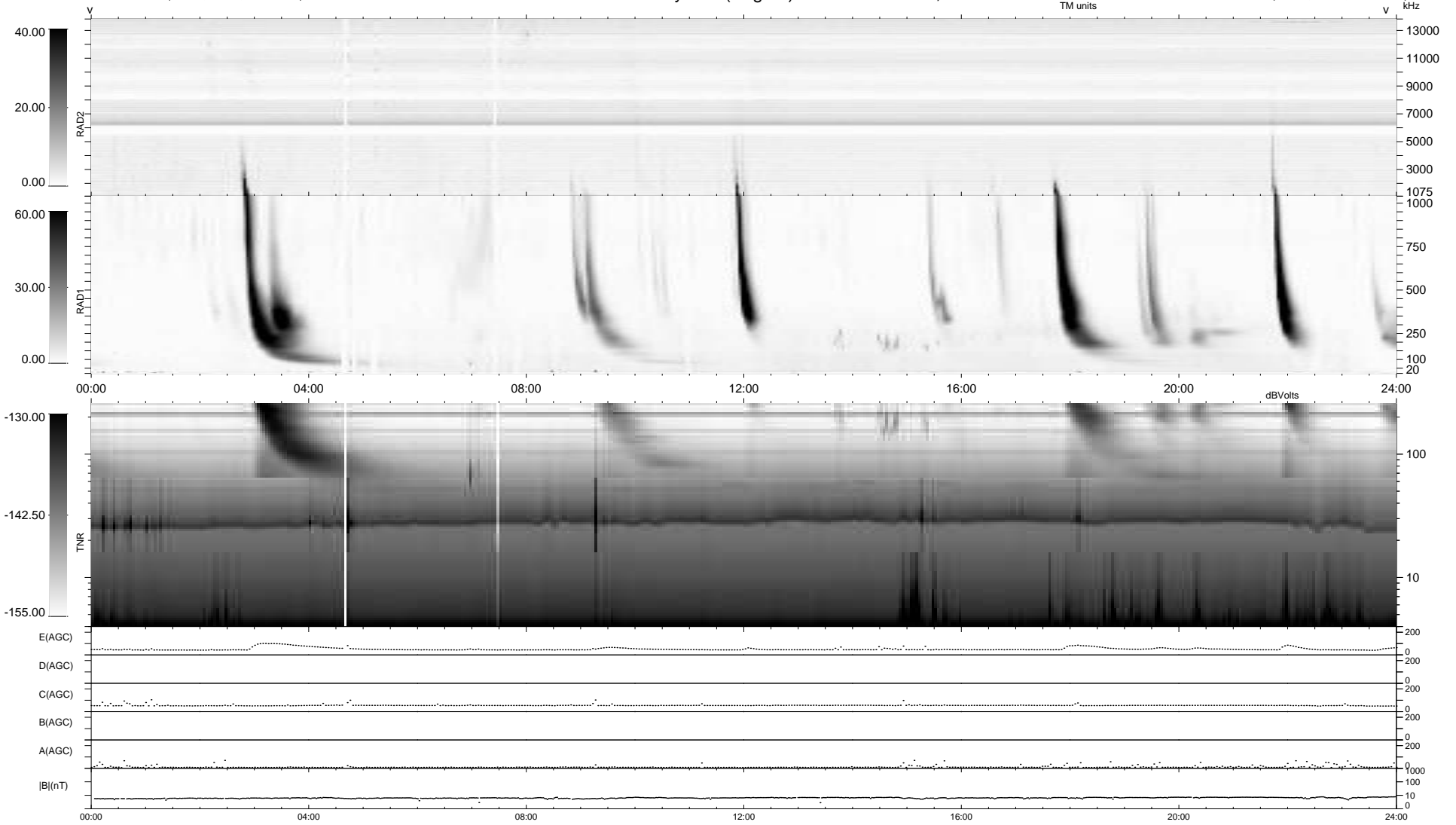
31 bad + 908 good MF/939MF projected (96%) - 0 missing MFs
 Avg interval = 180 secs
 Re = 259.44 (253.72, -50.84, 18.72 GSE)

windlib 2.0b

LZ version = v01

WIND/WAVES Summary Plot (Page 1) for 26-OCT-2014, DOY = 299

DAILY 2014-11-05 16:08:39
 Re = 259.06 (252.76, -53.63, 18.59 GSE)



```

RAD2
Antenna Ey .....
Mode LIN(1) .....
SUM/SEP SEP .....
Toggle OFF .....

RAD1
Antenna Ex .....
Mode LIS(2,4) .....
SUM/SEP SUM .....
Toggle OFF .....

TNR
Antenna ExEy .....
Mode A-32 .....
Sweep ACE .....
  
```